

**ehB**  
RESIDENTIAL

Your Property - Our Business



20, Chestnut Square,

£1,500 Per  
Calendar Month



A three bedroom, semi detached house located in a popular North Leamington development. Offered Unfurnished & Available 31st July.



- Residential Estate Agents
- Lettings and Property Managers
- Land and New Homes Agents

Leamington Spa Office  
Somerset House  
Clarendon Place  
Royal Leamington Spa  
CV32 5QN

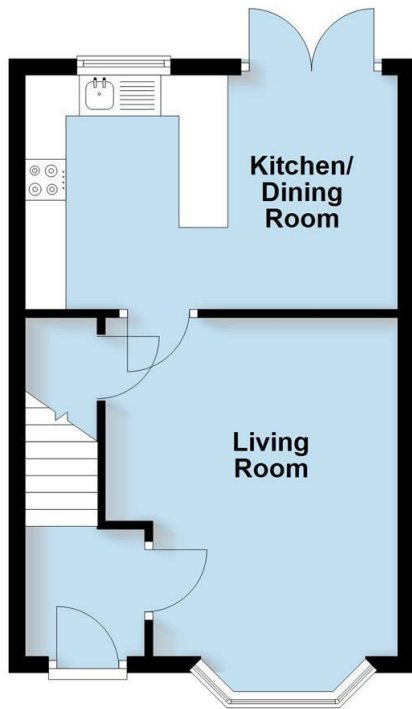
01926 881144 [ehbresidential.com](http://ehbresidential.com)

Energy Efficiency Rating	Current	Potential
Very energy efficient - lower running costs		
(92 plus) <b>A</b>		
(81-91) <b>B</b>		
(69-80) <b>C</b>		
(55-68) <b>D</b>	67	77
(39-54) <b>E</b>		
(21-38) <b>F</b>		
(1-20) <b>G</b>		
Not energy efficient - higher running costs		
<b>England &amp; Wales</b>	EU Directive 2002/91/EC	

Also at: Warwick, 17-19 Jury St, Warwick CV34 4EL

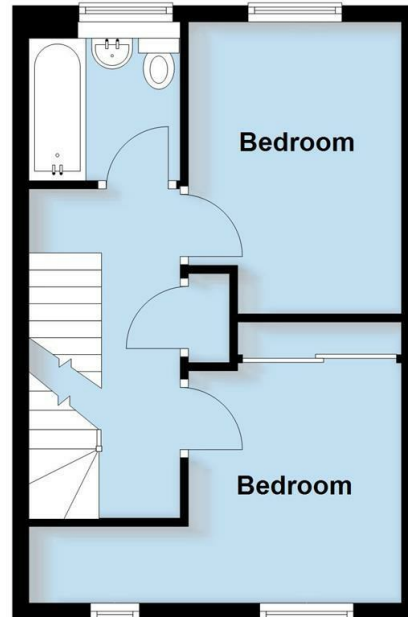
### Ground Floor

Approx. 32.8 sq. metres (353.1 sq. feet)



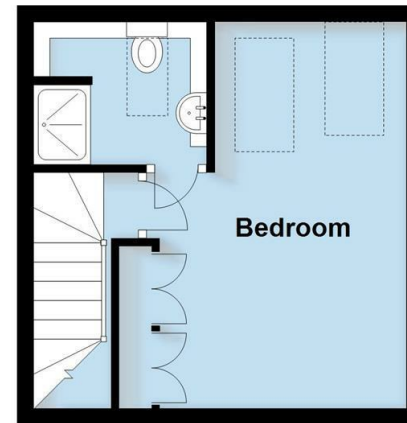
### First Floor

Approx. 32.5 sq. metres (350.2 sq. feet)



### Second Floor

Approx. 21.6 sq. metres (232.9 sq. feet)



Total area: approx. 87.0 sq. metres (936.2 sq. feet)

This plan is for illustration purposes only and should not be relied upon as a statement of fact