



Uxbridge Road, KT1

£318,000

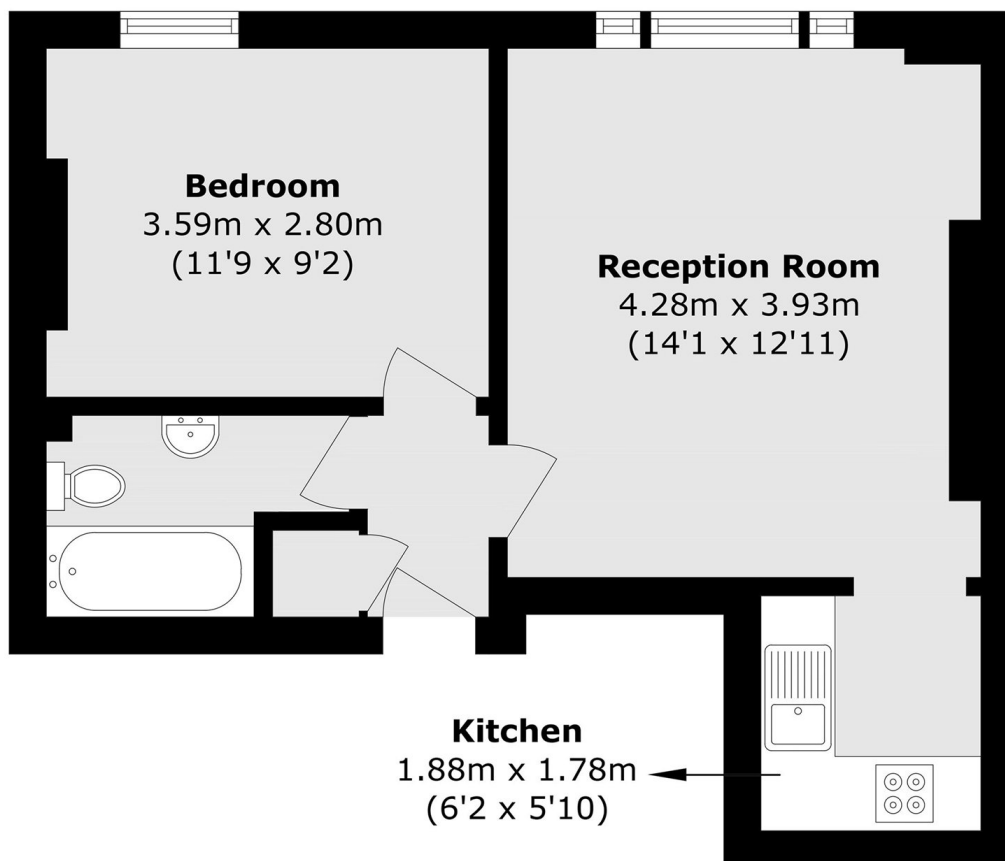
Set within an imposing Grade II listed building on a premier river road, this charming top floor period conversion offers character and convenience in equal measure. The property features a well-proportioned double bedroom and benefits from a share of freehold, adding long-term appeal. Offered to the market with no onward chain, it presents an excellent opportunity for a straightforward purchase. Further advantages include allocated parking, a rare feature in such a sought-after riverside location.

Uxbridge Road is one of Surbiton's finest roads along the river, off the desirable Maple Road and approximately half a mile away from Surbiton town centre.

Features

- Top Floor Period Conversion
- One Double Bedroom
- No Onward Chain
- Share Of Freehold
- Allocated Parking
- Grade II listed Building

Uxbridge Road, Kingston Upon Thames, KT1



Total area (approx.): 37.1 sq. m (399.3 sq. ft)