



Oswald Road, Southall

Offers in Region of £475,000

SAB
ESTATES



Oswald Road

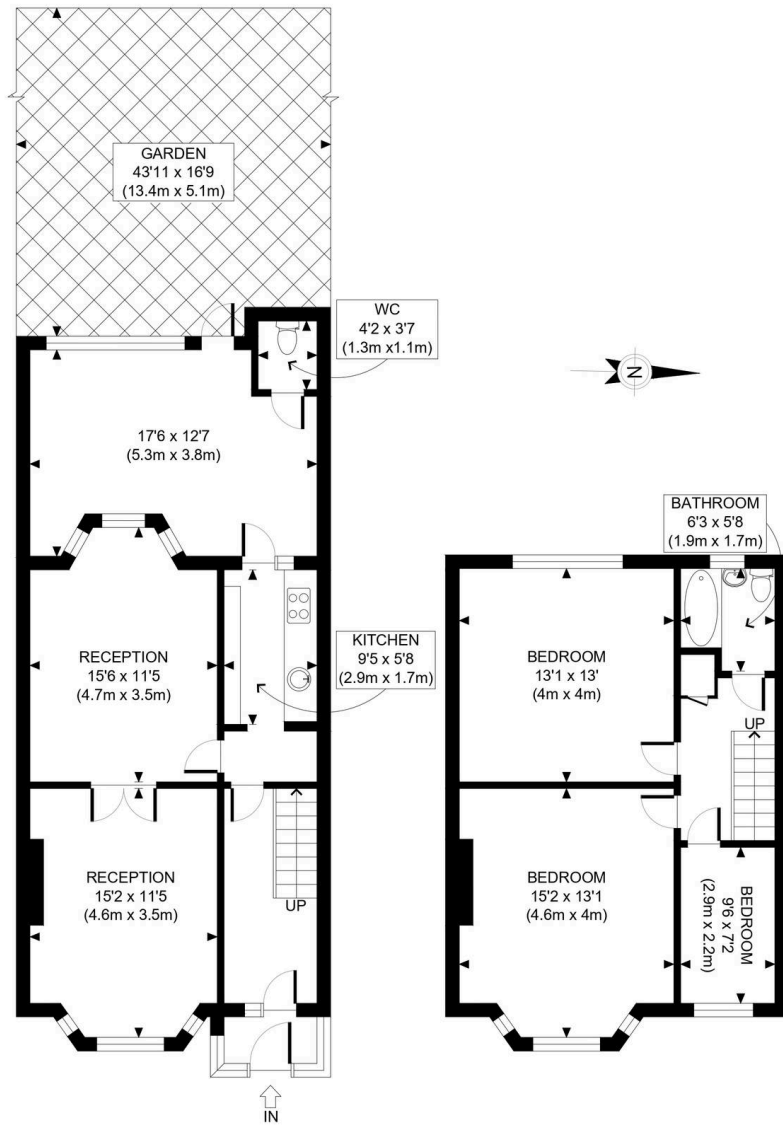
Southall

- Chain Free
- Permit Parking
- Private Rear Garden
- Additional W/C
- Potential for Further Extension STPP
- Walking Distance to Southall Station
- Close to Local Amenities

Council Tax band: D

Tenure: Freehold





GROUND FLOOR
GROSS INTERNAL
FLOOR AREA 739 SQ FT

FIRST FLOOR
GROSS INTERNAL
FLOOR AREA 525 SQ FT

APPROX. GROSS INTERNAL FLOOR AREA: 1264 SQ FT/ 117 SQM



This plan is for illustrative purposes only and should be used as such by any prospective client. Whilst every attempt has been made to ensure the accuracy of the Floor Plan contained here, measurements of the doors, windows, rooms and any other items are approximate and no responsibility is taken for any errors, omissions, or misstatement. The services, systems and appliances shown have not been tested and no guarantee as to the operability or efficiency can be given.



SAB Estates

236-238 Ruislip Road, Greenford - UB6 9RS

020 8575 2929 • info@sabestates.com • www.sabestates.com/