



2 Vent D`Ete

La Rue De L`Etoquet



2 Vent D`Ete, La Rue De L`Etocquet, St John, JE3 4AE

Approached via a quiet country lane, this substantial detached family home has been recently built to the highest of standards throughout. Generously proportioned this modern home offers 2700 sq ft of accommodation, with quality herringbone oak effect tiling all through the ground floor. Beautifully designed interior by Nicolle Murray incorporating shaker style kitchen, with centre island, truly the hub of the home. Open plan offering great space to entertain the whole family and friends. The living room provides ample seating/entertainment space with media wall, recessed shelving and inset electric fireplace with bi folding doors into the wrap around enclosed garden. Adjacent there is a second reception room/snug and cloakroom. Upstairs the first floor provides four double bedroom suites. Special mention must be made to the master bedroom with vaulted ceiling, walk in dressing room and luxurious four piece bathroom with free standing bathtub and double sinks. From this room there is also access to a south facing balcony, from which there are rural views.

Externally the property offers a fully enclosed low maintenance wrap around garden with lawn and patio areas (there is potential to extend the garden, details upon request). additionally there is driveway parking for two/three cars and integral single garage.

This would be the perfect home for a busy family, professional couple or for those down sizing without comprising on internal space or quality. Viewing is highly recommended.



Parish: St John

Qualification: Qualified

Tenure: Freehold

Price £2,099,000



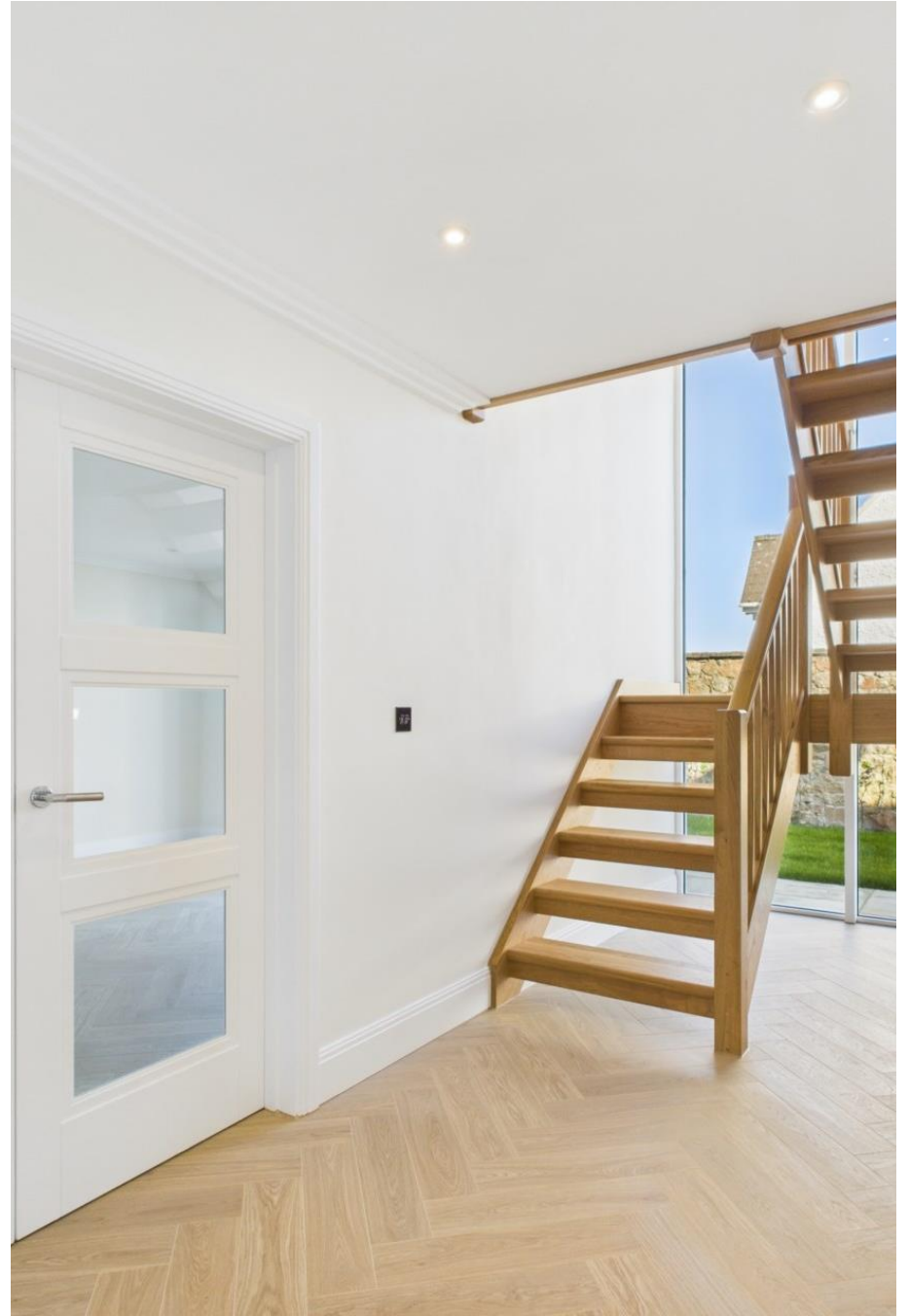
- Detached granite faced home
- Four bedroom suites
- Quiet country location
- Exceptional finish
- 33ft living space
- Garden, garage and parking







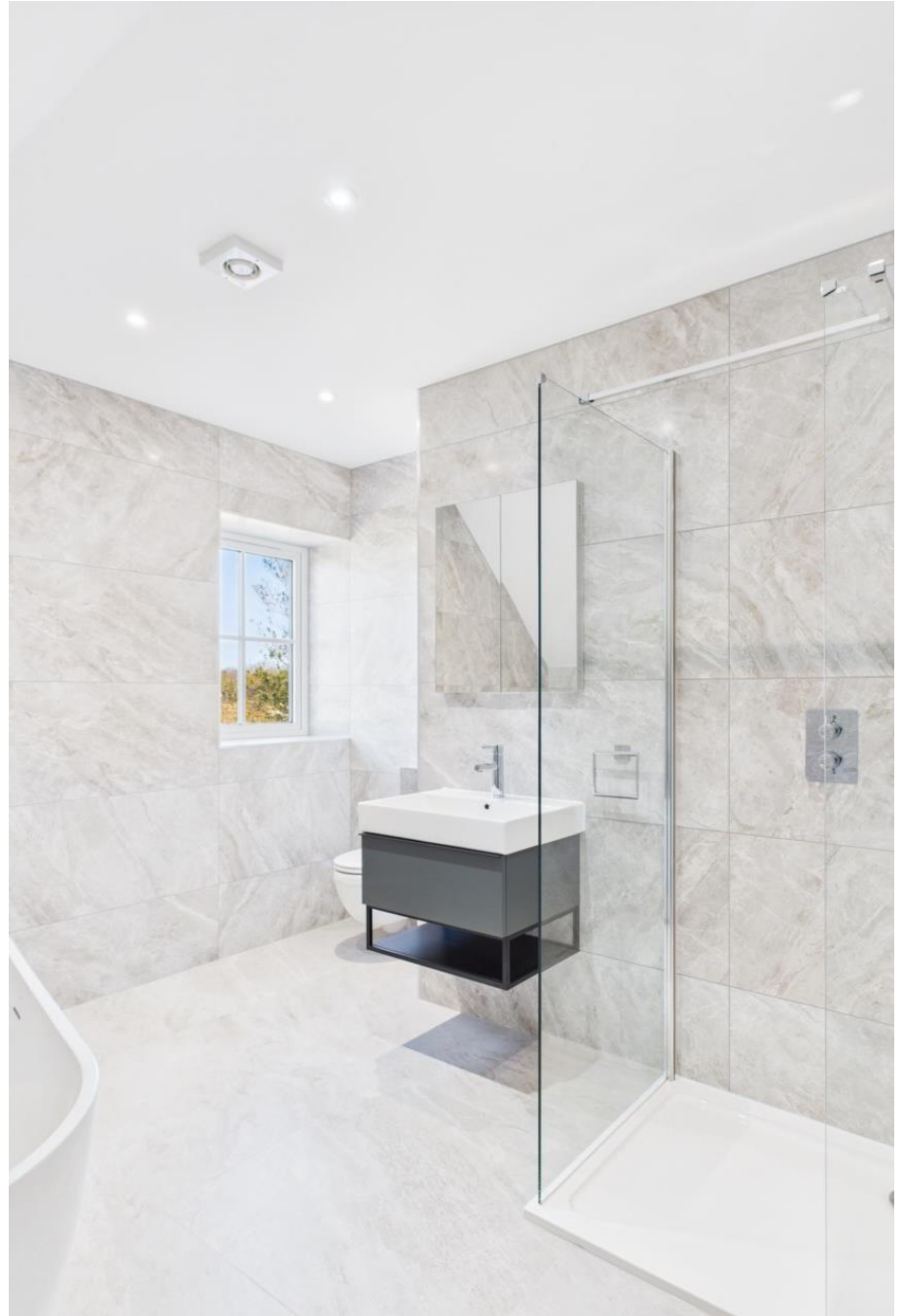












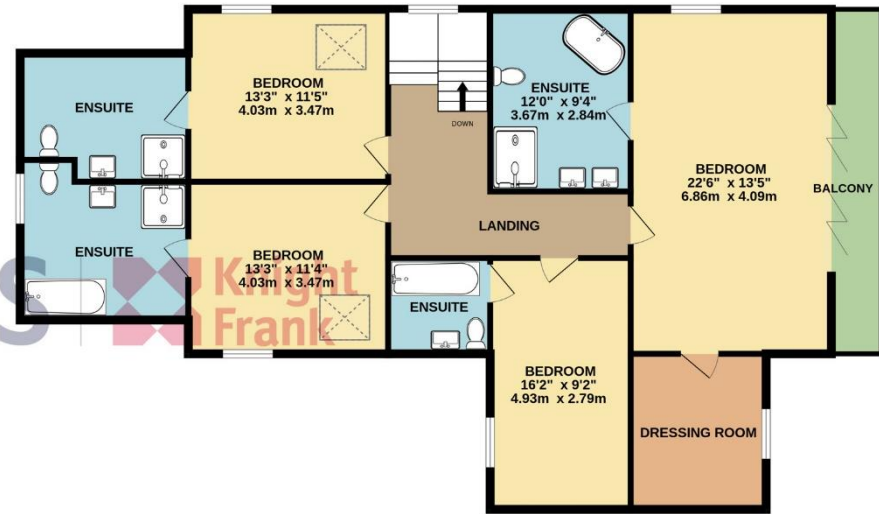




GROUND FLOOR
1375 sq.ft. (127.8 sq.m.) approx.



1ST FLOOR
1351 sq.ft. (125.5 sq.m.) approx.



TOTAL FLOOR AREA : 2727 sq.ft. (253.3 sq.m.) approx.

Whilst every attempt has been made to ensure the accuracy of the floorplan contained here, measurements of doors, windows, rooms and any other items are approximate and no responsibility is taken for any error, omission or mis-statement. This plan is for illustrative purposes only and should be used as such by any prospective purchaser. The services, systems and appliances shown have not been tested and no guarantee as to their operability or efficiency can be given.
Made with Metropix ©2025

This plan is for layout guidance only. Not drawn to scale unless stated. Windows and door openings are approximate. Whilst every care is taken in the preparation of this plan, please check all dimensions, shapes and compass bearings before making any decisions reliant upon them.

Services

All mains services (no gas)

Fully double glazed

Underfloor electric heating (air source heat pump)

+441534 877977

Knight Frank Jersey

37-39 Halkett Place, St. Helier, Jersey JE2 4WG

knightfrank.je

Your partners in property

1. Particulars: These particulars are not an offer or contract, nor part of one. You should not rely on statements given by Knight Frank Jersey in the particulars, by word of mouth or in writing (“information”) as being factually accurate about the property, its condition or its value. Neither Knight Frank Jersey nor any joint agent has any authority to make any representations about the property, and accordingly any information given is entirely without responsibility on the part of Knight Frank Jersey. 2. Material Information: Please note that the material information is provided to Knight Frank Jersey by third parties and is provided here as a guide only. While Knight Frank Jersey has taken steps to verify this information, we advise you to confirm the details of any such material information prior to any offer being submitted. If we are informed of changes to this information by the seller or another third party, we will use reasonable endeavours to update this as soon as practical. 3. Photos, Videos etc: The photographs, property videos and virtual viewings etc. show only certain parts of the property as they appeared at the time they were taken. Areas, measurements and distances given are approximate only. 4. Regulations etc: Any reference to alterations to, or use of, any part of the property does not mean that any necessary planning, building regulations or other consent has been obtained. A buyer must find out by inspection or in other ways that these matters have been properly dealt with and that all information is correct. 5. Fixtures and fittings: A list of the fitted carpets, curtains, light fittings and other items fixed to the property which are included in the sale (or may be available by separate negotiation) will be provided by the Seller’s Lawyer. Particulars dated 04/09/2025. All information is correct at the time of going to print.

