

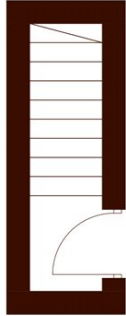


## Durham Terrace, W2

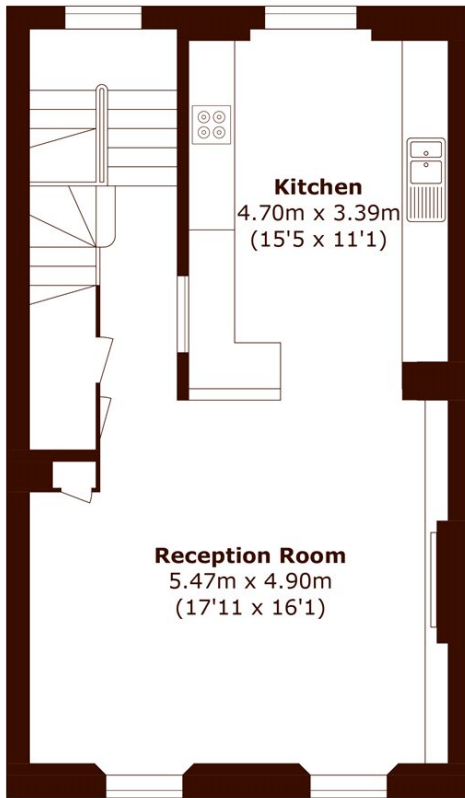
£1,850 per week (£8,016 pcm)

2 2 1 D

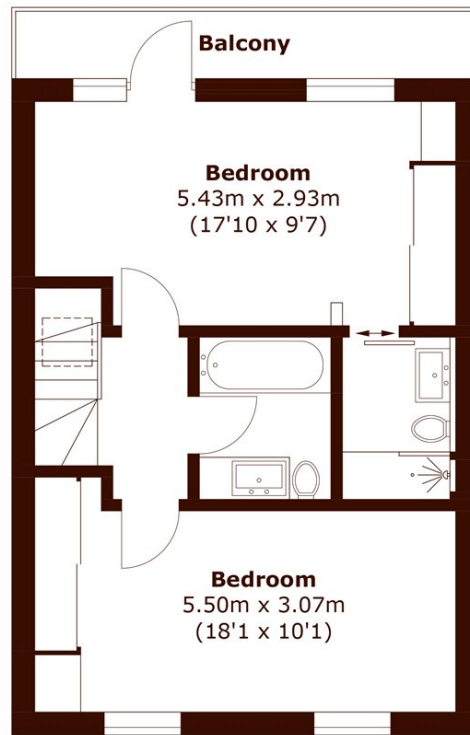
- Top Floor
- Bespoke Kitchen
- Interior designed throughout
- Period Building
- Ample built-in storage
- Abundance of natural light



**Second Floor**



**Third Floor**



**Fourth Floor**

Total area (approx.): 100.8 sq. m (1,085.0 sq. ft)

Balcony area (approx.): 5.3 sq. m (57.0 sq. ft)

**Marsh & Parsons Notting Hill**

2-6 Kensington Park Road,  
London, W11 3BU  
020 7313 2890