



Wheel House

1 Burrells Wharf Square, E14

Asking Price £950,000

An exceptional and refined, riverside 2-bedroom sub-penthouse apartment within one of Canary Wharf's most desirable residential developments, Burrell's Wharf.

CHESTERTONS



Wheel House

1 Burrells Wharf Square, E14

- 2 Bedrooms | 2 Bathrooms.
- Approx. 1258 sq. ft of Internal Living Space.
- 24 Hour Concierge.
- Stunning panoramic views across the River Thames and the historical Greenwich Peninsula..
- Access to premium resident amenities including gym, swimming pool, sauna and spa facilities.
- Excellent transport links via Mudchute and Island Gardens DLR, riverboat services and local bus routes.
- Nearby riverboat services provide convenient access to Central London and Battersea Power Station.



An exceptional refined riverside 2 bedroom apartment within one of Canary Wharf's most desirable residential developments. Set along the banks of the River Thames, this spacious and beautifully appointed apartment offers an abundance of natural light and breath-taking panoramic views across the water and towards the iconic London skyline, creating a truly tranquil yet connected urban retreat.

The apartment features a generous open-plan living and dining area that flows seamlessly into a contemporary kitchen complete with sleek white countertops, integrated appliances and high-quality finishes. Large windows frame the stunning river outlook, enhancing the sense of openness, while well-proportioned bedrooms and 2 modern bathroom suites enhance the overall utility of space.

Residents of Burrells Wharf Square benefit from an impressive range of on-site amenities designed to elevate everyday life, including a fully equipped gym, swimming pool, sauna and spa facilities, alongside beautifully maintained communal grounds. A 24-hour concierge service ensures both convenience and security, while additional features such as secure entry systems and resident parking further enhance the appeal of this prestigious development.

Tenure: Share of Freehold

Service Charge: £14,534 pa. (£9,316 Service Charge + £5,218 Reserve Fund)

Ground Rent: £50 p/a.

Local Authority: Tower Hamlets

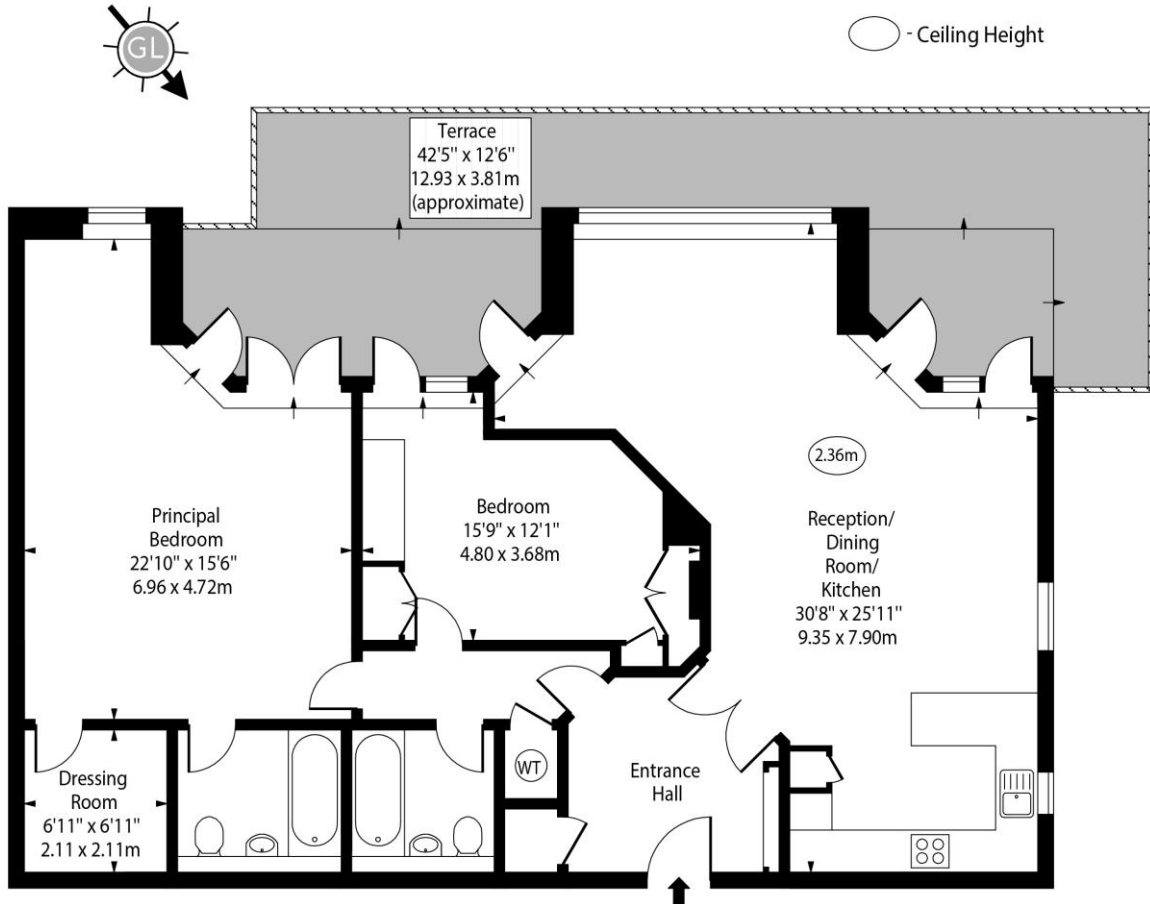
Council Tax Band: G

Score	Energy rating	Current	Potential
92+	A		
81-91	B		
69-80	C	79 C	84 B
55-68	D		
39-54	E		
21-38	F		
1-20	G		

Chestertons Canary Wharf & Greenwich Sales

Harbour Island
 28 Harbour Exchange Square
 London
 E14 9GE
 canarywharf@chestertons.co.uk
 020 7510 8300
 chestertons.co.uk

Wheel House,
Burrells Wharf Square, E14



Seventh Floor

Approx Gross Internal Area 1258 Sq Ft - 116.87 Sq M

Every attempt has been made to ensure the accuracy of the floor plan shown. However, all measurements, fixtures, fittings, and data shown are approximate interpretations and for illustrative purposes only. Measured according to the RICS. Not To Scale.

www.goldlens.co.uk

Ref. No. 031436K

