



## Upper Tulse Hill, Brixton, SW2

3 bedroom flat - purpose built for sale

£450,000

Leasehold

### Property Details

This charming three double bedroom purpose-built flat combines a sense of space and light with modern comfort, situated within a quiet residential pocket off Brixton Hill. Accessed via a private internal staircase from the first floor, the flat spans the top floor, giving it a house-like feel rarely found in flats. Vaulted ceilings and numerous windows, including Velux skylights, flood the home with natural light, creating an airy, uplifting atmosphere throughout. The open-plan kitchen and reception area offers room for both lounging and dining, while striking city views can be enjoyed from the living area. The adjoining kitchen features sleek white cabinetry, integrated appliances, and ample workspace, blending style with practicality. The flat offers three well-proportioned double bedrooms, providing flexibility for families, sharers, or a home office. A modern bathroom completes the accommodation, featuring a bathtub and an overhead shower. Residents also benefit from a secure bike shed. Upper Tulse Hill offers excellent transport links, nearby Brockwell Park, and easy access to Brixton's restaurants, cafés, and cultural amenities.

### Features

- Three double bedrooms
- Purpose built flat
- Over 800 square feet of internal space
- Bright and airy throughout
- Modern development
- Secure bike shed
- Local amenities of Brixton Hill
- Easy access to Brixton, Clapham, Streatham and Balham
- 10 minute stroll to Brockwell Park
- Chain-free

Council tax band D    EPC rating B (81)

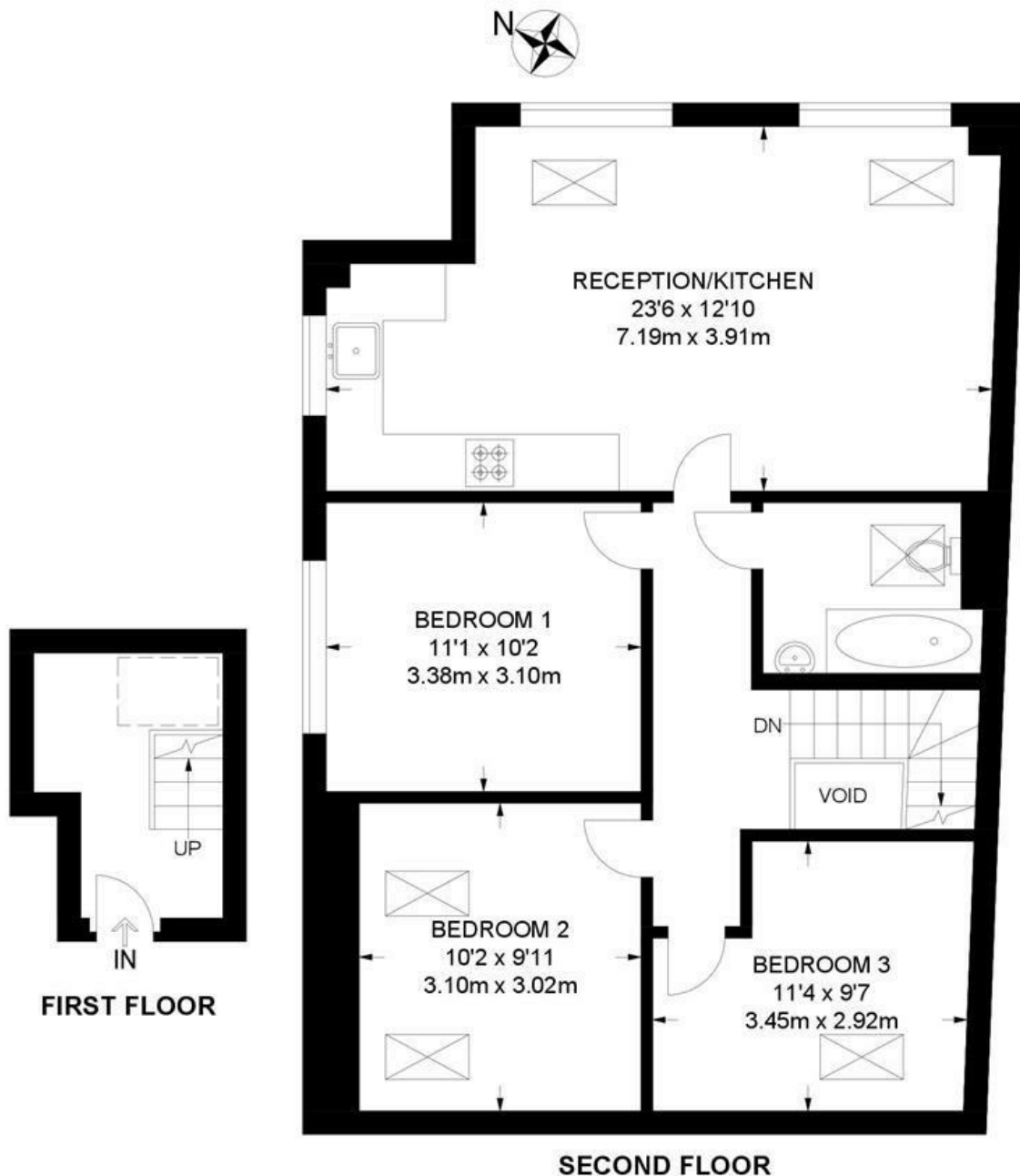


Upper Tulse Hill, Brixton, SW2

## Upper Tulse Hill, SW2

### 3 Bedroom Flat

APPROXIMATE GROSS INTERNAL AREA: **832 SQ FT / 77.3 SQ M**



While we try our very best, floor plans are produced as a guide only and we take no responsibility for the precise accuracy with which any property is represented.

Upper Tulse Hill, Brixton, SW2

