

Jonathan Hunt

ESTATE AGENCY

20 High Street Ware SG12 9BX

Tel: 01920 411090

8 High Street Buntingford SG9 9AG

Tel: 01763 272727

info@jonathan-hunt.co.uk

www.jonathanhunt.co.uk



Bourne House Clapgate, Albury, Ware, Hertfordshire, SG11 2JS

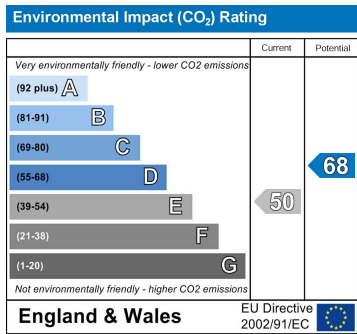
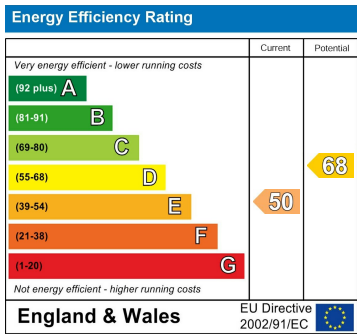
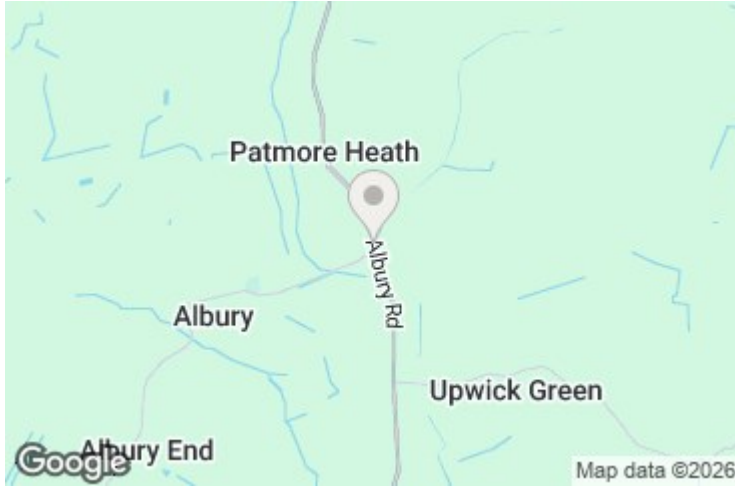
Offers In Excess Of £650,000

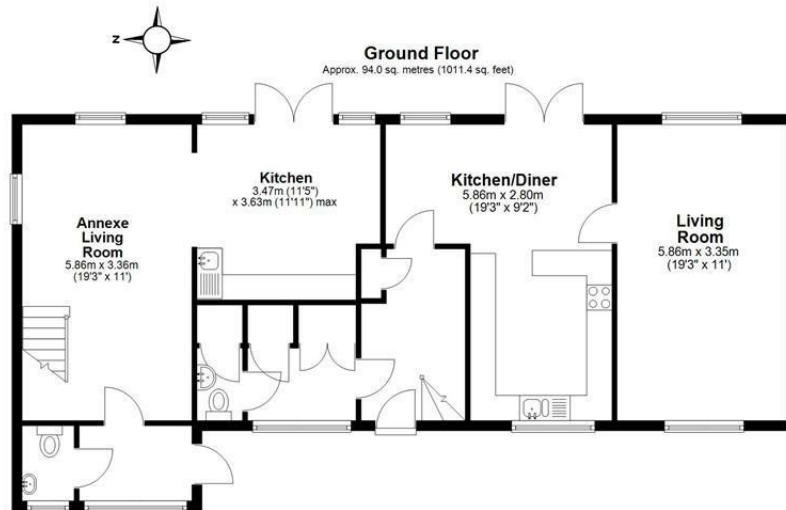
CREATE YOUR DREAM HOME - 1800 SQ FT HOUSE WITH HUGE POTENTIAL - This 4/5 bedroom steel framed 1960's built house has a lovely open aspect to the rear over farmland and offers the rare opportunity to alter and adapt to suit your requirements. The flexible accommodation currently includes 3 reception rooms and 4/5 bedrooms including a self contained annexe section (see floorplan) with scope to extend on the side, into the loft, and the rear. Off Street parking. Clapgate is a peaceful hamlet just outside the village of Albury. The property has oil fired central heating and mains drainage. A viewing is highly recommended to appreciate the tranquil setting.

Buntingford Branch - Company No. 10303541 VAT No. 10303541

Ware Branch - Company No. 4759215 VAT No. 700174975

Bourne House Clapgate, Albury, Ware, Hertfordshire, SG11 2JS





Total area: approx. 168.5 sq. metres (1813.3 sq. feet)

This floor plan has been created by a third party and should be used as a general outline for guidance only. Any areas, measurements or distances quoted are approximate and any intending purchaser or lessee should satisfy themselves by inspection, searches, enquiries and/or full survey as to the correctness of each statement. We accept no responsibility or liability for any loss whatsoever that may arise as a result of this plan and the information contained within.

© @modephoto.uk | www.modephoto.co.uk
Plan produced using PlanUp.™

Bourne House