



Queen Mary Road, SE19 | Guide Price £500,000

020 8702 9333

crystalpalace@pedderproperty.com

pedder
We live local



In General

- Completely upgraded throughout
- A share of the freehold
- Large private rear garden
- 28ft reception room with skylight
- Sought after road in popular Crystal Palace
- Characterful features
- Two double bedrooms

In Detail

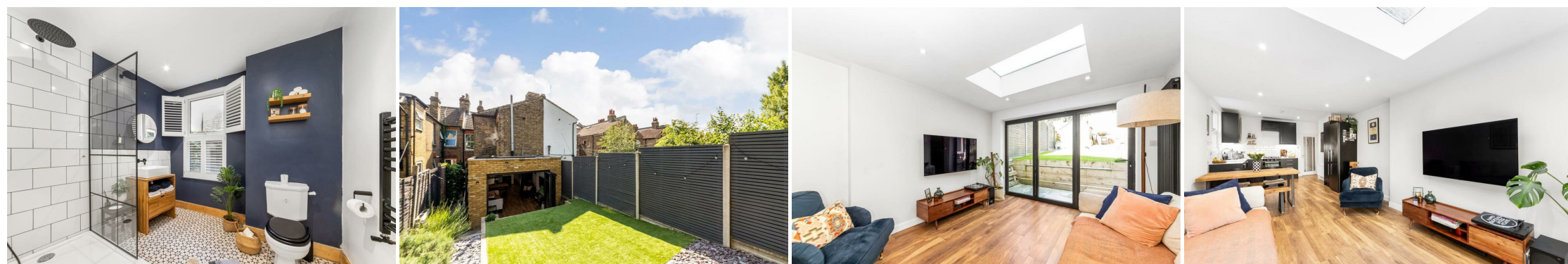
**** Guide price £500,000 - £525,000 **** A beautifully finished two bedroom ground floor garden flat forming part of a highly desirable road in Crystal Palace.

The property has been remodelled, extended, and completely upgraded by the current owners to offer a unique, spacious, and immediately enjoyable new home. The heart of the living space is an impressive 28ft reception room with a large skylight, solid wood flooring, and bi-fold doors to outside. The kitchen is socially open (with space to dine) and nicely contrasts with the fresh white paintwork, and has been finished with quartz surfaces, metro brick tiling, and a Belfast sink. Unusual for other properties on the road, there are two double bedrooms - the larger with stripped wood flooring, a pretty feature fireplace, coving, and a sunny shuttered bay window. The second bedroom works well as an occasional guest room and home study, whilst the shower room has contemporary matt black fittings and a large walk-in rainfall shower.

The real highlight is the stunning private rear garden. This professionally landscaped space boasts a westerly aspect and includes a custom bench and a raised seating area and boxed planters. This is the perfect backdrop for summer barbeques and lazy afternoons.

Those unfamiliar with Queen Mary Road will be pleased to note that there is excellent access to transport links including trains to London Victoria and London Bridge, as well as key bus routes. The road is a mix of both families and professionals, and offers a strong sense of community which difficult to find in some London post codes.

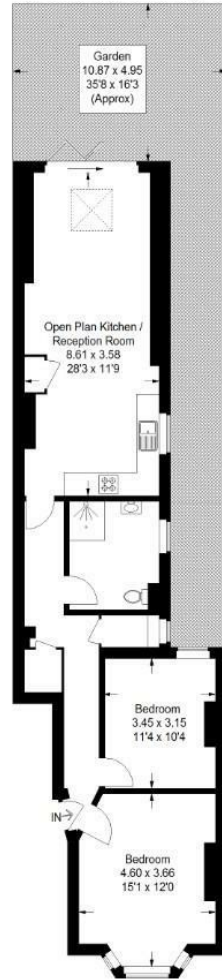
EPC: C | Council Tax Band: B | Lease: 238 years remaining | SC:TBC | GR:TBC | BI:TBC



Floorplan

Queen Mary Road, SE19

Approximate Gross Internal Area
78.6 sq m / 846 sq ft



Ground Floor

Copyright www.pedderproperty.com © 2025
These plans are for representation purposes only as defined by RICS - Code of Measuring Practice. Not drawn to Scale. Windows and door openings are approximate. Please check all dimensions, shapes and compass bearings before making any decisions reliant upon them.

Energy Efficiency Rating	Current	Potential
Very energy efficient - lower running costs		
102 plus) A		
81-101) B		
69-80) C		
55-68) D		
39-54) E		
21-38) F		
1-20) G		
Not energy efficient - higher running costs		
England & Wales	EU Directive 2002/91/EC	

Pedder Property Ltd trading as Pedder for themselves and for the vendor/landlord of this property whose agents they are, give notice that (1) these particulars do not constitute any part of an offer or contract, (2) all statements contained within these particulars are made without responsibility on the part of Pedder or the vendor/landlord, (3) whilst made in good faith, none of the statements contained within these particulars are to be relied upon as a statement of representation or fact, (4) any intending purchaser/tenant must satisfy him/herself by inspection or otherwise as to the correctness of each of the statements contained within these particulars, (5) the vendor/landlord does not make or give either Pedder or any person in their employment any authority to make or give representation or warranty whatsoever in relation to this property.