



Whippet Way, Chesterfield S41 0UR

welcome to

Whippet Way, Chesterfield

Attractive modern detached family home with off-road parking. Offering four bedrooms including a principal en-suite, two reception rooms, a stylish open-plan kitchen/diner, utility room and downstairs WC, plus a landscaped rear garden ideal for family living.

Front Yard / Driveway

The property is approached via a block-paved driveway, providing off-road parking and giving a smart, low-maintenance frontage. Decorative slate borders, neatly planted shrubs and a bay-fronted elevation add kerb appeal, while gated side access leads conveniently through to the rear garden.

Hallway

A welcoming entrance hall creates an immediate sense of space and brightness. The hall benefits from modern internal doors, herringbone-style flooring that flows through the ground floor, and provides access to the principal reception rooms, downstairs WC and staircase.

Living Room

The living room is a generously sized and naturally bright space, featuring both front-facing and side-facing bay windows with plantation shutters. Soft neutral carpeting enhances comfort, while the proportions comfortably accommodate a range of seating arrangements, making this an ideal family sitting room or space for entertaining.

Lounge

Currently arranged as a dedicated playroom, this versatile lounge offers excellent flexibility and could equally serve as a home office, snug or hobby room. Ample floor space and a large window allowing plenty of daylight, making the room both practical and welcoming.

Downstairs W/C

A neatly presented cloakroom fitted with a modern white suite, comprising a WC and wash basin with tiled splashback. Finished in contemporary neutral tones, ideal for guests and everyday convenience.

Kitchen / Diner

The heart of the home is this stylish open-plan kitchen and dining area, beautifully finished with a range of sleek units and complementary worktops. Large windows and glazed doors flood the room with natural light and provide direct access to the rear garden, creating a perfect flow for family living and entertaining. The kitchen also benefits from an integrated fridge/freezer, dishwasher and wine cooler.

Utility

A practical utility room positioned off the kitchen, offering additional storage, workspace and plumbing for laundry appliances. The room continues the modern finish of the kitchen and provides external access, ideal for busy households. This room also benefits from an integrated washer/dryer and provides access to a large storage cupboard/storage room.

Stairs / Landing

The staircase rises to a bright first-floor landing, finished with soft carpeting and neutral decor. From here, doors lead to all bedrooms and the family bathroom, while natural light enhances the sense of space.

Bedroom One

A well-proportioned principal double bedroom offering a calm and restful atmosphere. Featuring plush carpeting, a large window overlooking the front aspect, and ample space for freestanding furniture. The room also benefits from direct access to a private en-suite shower room and includes two fitted mirrored double wardrobes.





En-Suite

The en-suite is fitted with a contemporary suite, including a walk-in shower enclosure, WC and wash basin. Finished with modern tiling and a clean, bright aesthetic, providing comfort and practicality.

Bedroom Two

Another generous double bedroom, presented in neutral tones with soft carpeting and plenty of natural light. Ideal for family members or guests, with space for wardrobes and bedroom furniture.

Bedroom Three

Another well-sized double bedroom currently arranged as a child's room, offering excellent proportions for a bed, desk and storage. Light decor and a bright window make this a versatile space.

Bedroom Four

A further double bedroom, ideal as a guest bedroom, nursery, home office or dressing room. Finished to the same high standard throughout, with neutral decor and natural lighting.

Family Bathroom

The family bathroom is fitted with a modern white suite, comprising a panelled bath, shower, WC and wash basin. Tastefully tiled and finished in neutral tones, offering a clean and contemporary space for everyday use.

Rear Garden

The rear garden is beautifully landscaped and well-maintained, offering a perfect balance of patio and lawn. A paved seating area provides an ideal spot for outdoor dining and entertaining, while the lawn is bordered by raised planters and enclosed fencing with a wall along one side, creating a private, family-friendly environment.



view this property online williamhbrown.co.uk/Property/CSF105213



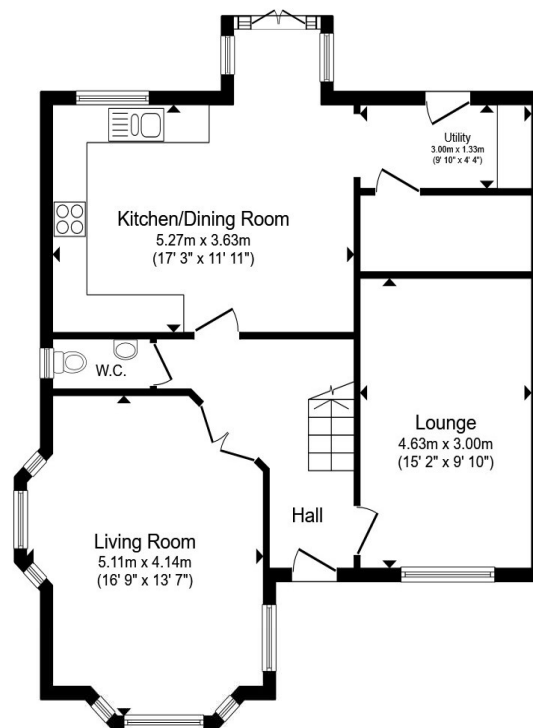
welcome to

Whippet Way, Chesterfield

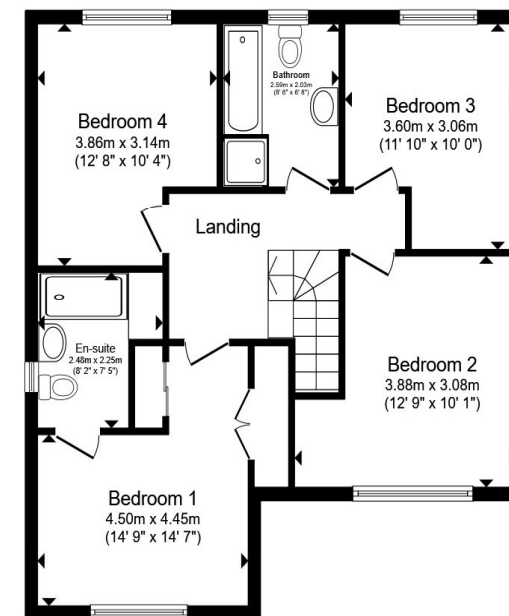
- Council Tax Band - D
- Ample Off-Street Parking
- Utility Room And Downstairs W/C
- Beautifully Presented Throughout
- Modern Kitchen / Diner

Tenure: Freehold EPC Rating: B
Council Tax Band: D

£410,000



Ground Floor



First Floor

Total floor area 141.1 m² (1,518 sq.ft.) approx

This floor plan is for illustrative purposes only. It is not drawn to scale. Any measurements, floor areas (including any total floor area), openings and orientation are approximate. No details are guaranteed, they cannot be relied upon for any purpose and they do not form part of any agreement. No liability is taken for any error, omission or misstatement. A party must rely upon its own inspection(s). Powered by www.propertybox.io



view this property online williamhbrown.co.uk/Property/CSF105213



Property Ref:
CSF105213 - 0006

1. MONEY LAUNDERING REGULATIONS Intending purchasers will be asked to produce identification documentation at a later stage and we would ask for your co-operation in order that there is no delay in agreeing the sale. 2. These particulars do not constitute part or all of an offer or contract. 3. The measurements indicated are supplied for guidance only and as such must be considered incorrect. Potential buyers are advised to recheck measurements before committing to any expense. 4. We have not tested any apparatus, equipment, fixtures or services and it is in the buyers interest to check the working condition of any appliances. 5. Where an EPC, or a Home Report (Scotland only) is held for this property, it is available for inspection at the branch by appointment. If you require a printed version of a Home Report, you will need to pay a reasonable production charge reflecting printing and other costs. 6. We are not able to offer an opinion either written or verbal on the content of these reports and this must be obtained from your legal representative. 7. Whilst we take care in preparing these reports, a buyer should ensure that his/her legal representative confirms as soon as possible all matters relating to title including the extent and boundaries of the property and other important matters before exchange of contracts.

William H Brown is a trading name of Sequence (UK) Limited which is registered in England and Wales under company number 4268443. Registered Office is Cumbria House, 16-20 Hockliffe Street, Leighton Buzzard, Bedfordshire, LU7 1GN. VAT Registration Number is 500 2481 05.

william h brown



01246 204492



chesterfield@williamhbrown.co.uk



6 Glumangate, CHESTERFIELD, Derbyshire, S40 1TP



williamhbrown.co.uk