

**LONDON  
VICTORIA  
GROUPS**



LONDON  
CAPITAL  
HOMES



LONDON  
CAPITAL  
HOMES



LONDON  
CAPITAL  
HOMES



LONDON  
CAPITAL  
HOMES

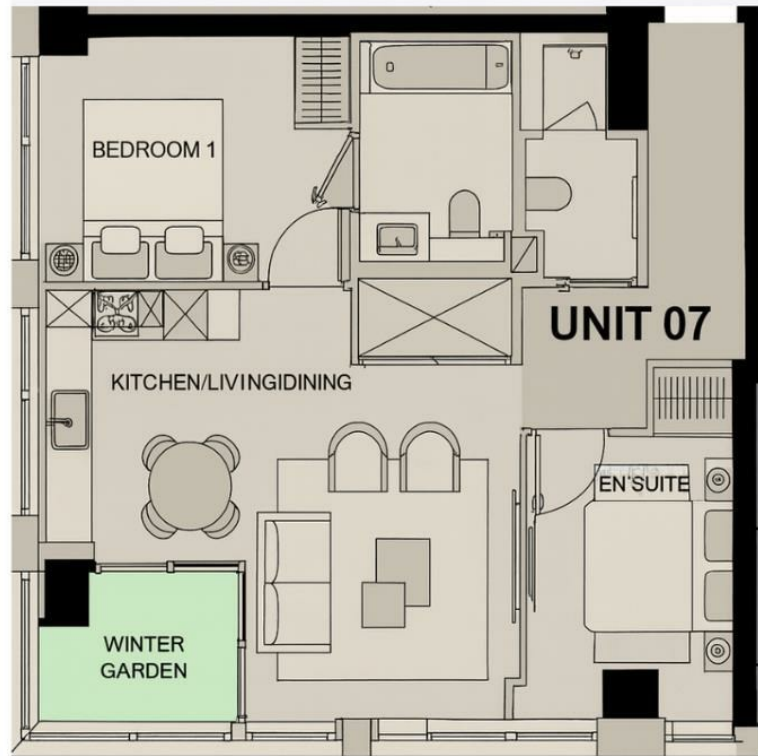
## 67 Bondway

, London SW8 1GS

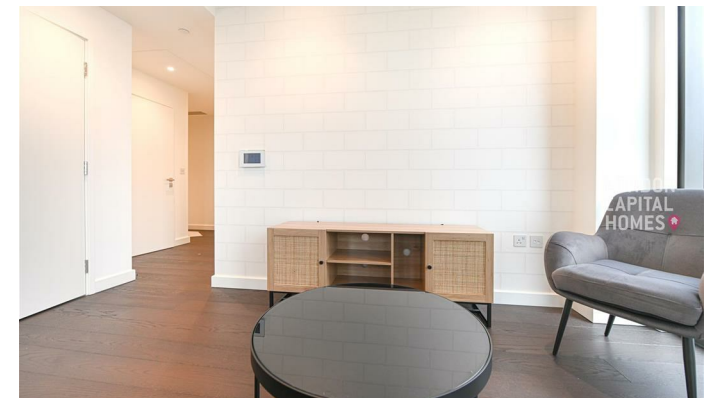
- Two-bedroom, two-bathroom apartment
  - Floor-to-ceiling windows
- Fully equipped gym and wellness facilities
  - Private cinema room
  - EPC-B
- Bright open-plan living and dining area
  - 24-hour concierge and security
- Luxury swimming pool, Jacuzzi, and spa
  - Moments from Vauxhall Station
  - CTB-F

**£4,750 Per Month**

Local Authority **Lambeth**  
Council Tax Band **F**  
EPC Rating **B**



UNIT	07	2B-F.2
Kitchen/Living/Dining		18' 8" x 10' 2 1/10' 5"
Bedroom 1		12' 6" x 8' 5"
Bedroom 2		9' 1" x 10' 8"
Apartment Area		733.6 ft <sup>2</sup>
Winter Garden		47.4 ft <sup>2</sup>
Total Area		700.4 ft <sup>2</sup>



**London Office Office**

Spaces Victoria, 25 Wilton Road, Pimlico,  
London, SW1V 1LW

**Contact**

020 3084 3094  
XL@londonvictoriagroups.co.uk  
www.londonvictoriagroups.co.uk

Agents Note: Whilst every care has been taken to prepare these particulars, they are for guidance purposes only. All measurements are approximate and for general guidance purposes only and whilst every care has been taken to ensure accuracy, they should not be relied upon and potential buyers/tenants are advised to recheck the measurements.

LONDON  
CAPITAL  
HOMES