



Price

£112,500

Leasehold

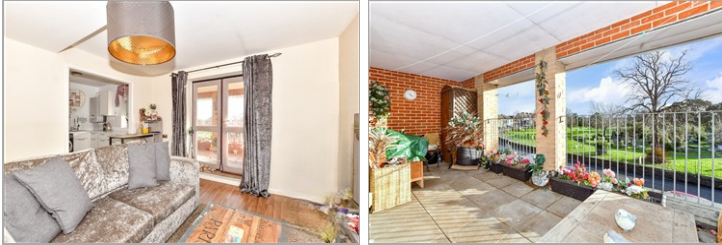
2x  1x  1x 

**Maureen Foye Court,
Haslemere Road,
Southsea, Hampshire,
PO4**

OVER 60?

Secure this property
for up to **59% less!**

cubitt&west
Helping you move forwards



Main features

- Price is for a 50% share. The remaining 50% can be purchased
- Allocated parking space and bike shed
- Large private balcony
- Secure intercom access
- Close to transport links, amenities and the seafront
- Perfect for first time buyers

Accommodation

FIRST FLOOR

Entrance Hallway

Lounge: 13'9 x 12'6 (4.19m x 3.81m)

Balcony

Kitchen: 8'5 x 7'9 (2.57m x 2.36m)

Bedroom 1: 16'1 x 8'6 (4.91m x 2.59m)

Bedroom 2: 9'2 x 7'9 (2.80m x 2.36m)

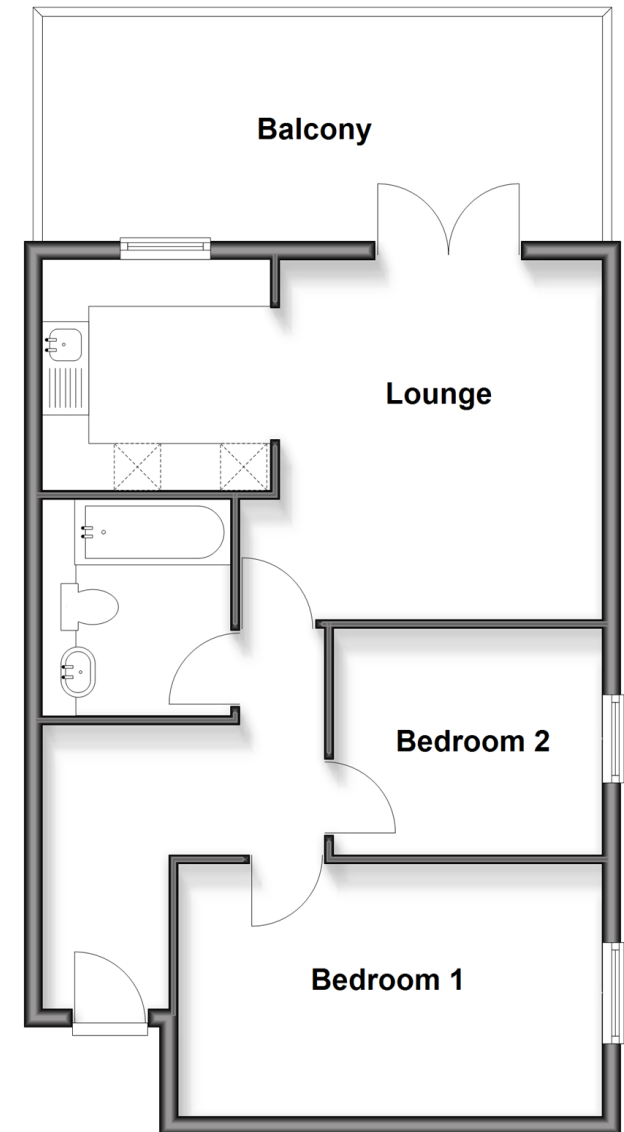
Bathroom

OUTSIDE

Allocated Parking

First Floor

Approx. 53.8 sq. metres (578.6 sq. feet)



Call Southsea - 023 9229 6396 ■ cubittandwest.co.uk

- Legal advice should be taken to verify fixtures/fittings, planning, alterations and/or lease details
- Appliances & services are untested, dimensions are approximate and floor plans are not to scale
- Through a Homewise Home For Life Plan people aged 60+ can secure this property for up to 59% less, by purchasing a Lifetime Lease



42227688/20260102/JT/MO