



**Guide Price**  
**£276,950**

**Freehold**

2x  2x  2x 

**Victoria Street, Eccles,  
Aylesford, Kent, ME20**

**OVER 60?**

Secure this property  
for up to **59% less!**

*Wards*  
Helping you move forwards



## Main features

- Full of character with ornate brickwork & kerb appeal
- Enjoy a feature fireplace in the dining room & a log burner in lounge
- Both bedrooms are doubles - no box room here
- A ground floor bathroom & an en-suite shower room adds luxury
- Private rear garden with shed

## Accommodation

### SPLIT LEVEL GROUND FLOOR

Lounge: 10'9 x 10'7 (3.28m x 3.23m)  
 Dining Room: 10'9 x 10'7 (3.28m x 3.23m)  
 Kitchen: 9'9 x 9'3 (2.97m x 2.82m)  
 Lobby Area  
 Bathroom

### SPLIT LEVEL FIRST FLOOR

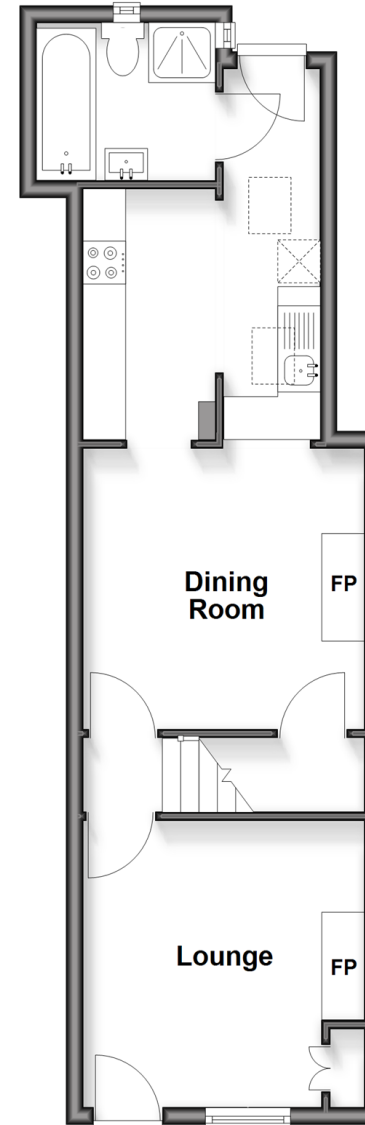
Landing  
 Bedroom 1: 10'9 x 10'8 (3.28m x 3.25m)  
 Bedroom 2: 10'9 x 10'7 (3.28m x 3.23m)  
 Dressing Area  
 En-Suite Shower Room

### OUTSIDE

Front & Rear Gardens  
 Shed

## Split Level Ground Floor

Approx. 39.5 sq. metres (425.1 sq. feet)



## Split Level First Floor

Approx. 30.6 sq. metres (329.1 sq. feet)



**Call Larkfield - 01732 847877 ■ [wardsof Kent.co.uk](http://wardsof Kent.co.uk)**

- Legal advice should be taken to verify fixtures/fittings, planning, alterations and/or lease details
- Appliances & services are untested, dimensions are approximate and floor plans are not to scale
- Through a Homewise Home For Life Plan people aged 60+ can secure this property for up to 59% less, by purchasing a Lifetime Lease



12935748/20260223/CK/RT