



## Ravenscourt Gardens, W6

£1,000,000

Located in a sought-after Grade II listed landmark building in the heart of Hammersmith, this exceptional three-bedroom, three-bathroom split-level flat offers an impressive living space across the first and second floors.

Ashlar Court is ideally situated within easy reach of Ravenscourt Park, the River Thames, and the vibrant amenities of King Street. Excellent transport links nearby provide swift access into central London

### Features

- Three Bedrooms
- Three Bathrooms
- Split Level
- Expansive Living Area
- Almost 1400sq Ft
- Allocated Underground Parking



## Ravenscourt Gardens, W6

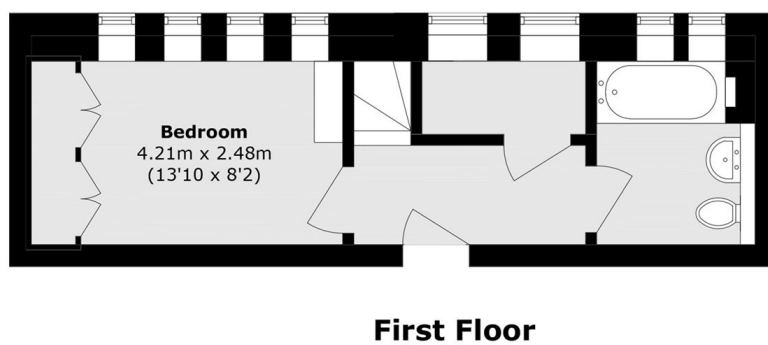
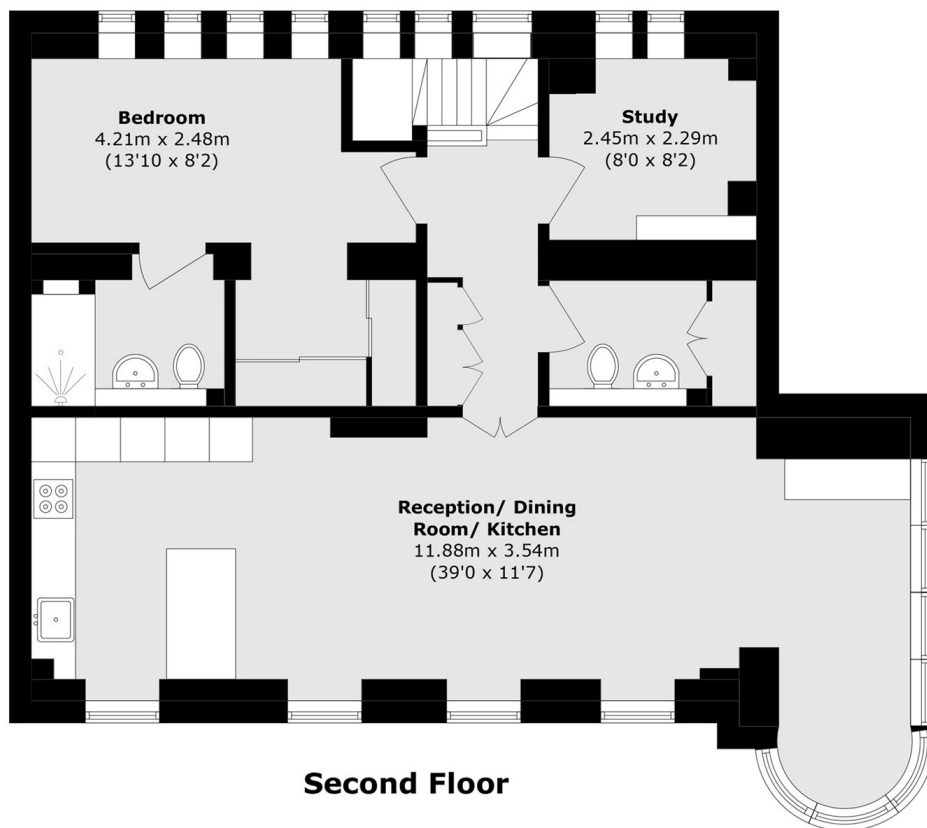
Beautifully arranged over two levels, the property features generous proportions and a superb balance of accommodation. The first floor comprises a bright and spacious bedroom with built-in storage, additional under-stairs storage, and a modern bathroom suite ideal for guests.

The second floor is defined by large dual-aspect windows that provide an abundance of natural light. A modern fitted kitchen with integrated appliances anchors one end of the expansive living area, which includes a curved crittal-style window-seating area alongside dedicated dining and lounge spaces. This level also includes a practical family bathroom with built-in utility storage and a well-sized third bedroom, perfect for use as a guest room, study, or nursery. The master suite completes this floor, featuring a walk-in dressing room and an en-suite bathroom.

The property further benefits from a share of the freehold, well-maintained communal areas, secure underground parking, lift access and an Energy Rating of C



# Ravenscourt Gardens, London, W6



Total area (approx.): 126.6 sq. m (1362.7 sq. ft)