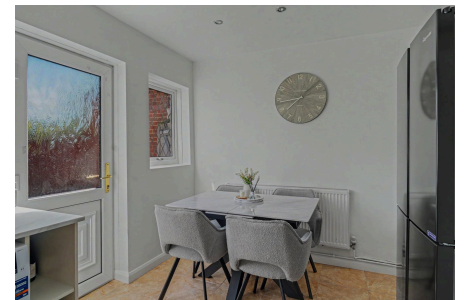
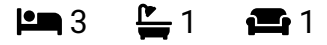


Hartfield Crescent, Birmingham, B27 7QL

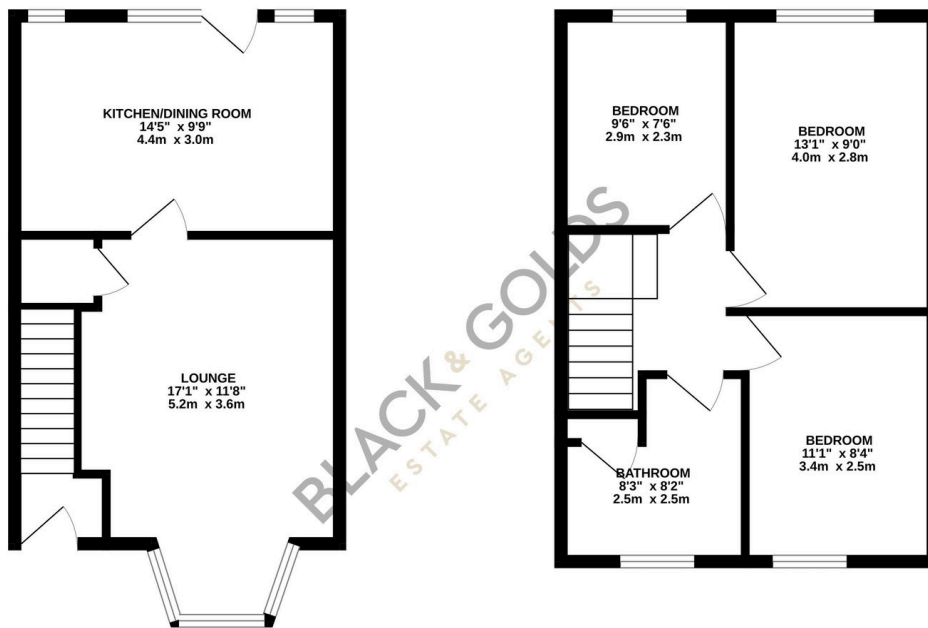
Offers Over £250,000



Situated on Hartfield Crescent, B27, this well-proportioned three-bedroom terraced property offers comfortable and practical accommodation, ideal for first-time buyers, families or investors.

Key Features

- Three bedroom terraced property
- Located on Hartfield Crescent, B27
- Spacious bay-fronted lounge
- Kitchen to the rear
- Three well-proportioned bedrooms
- Family bathroom
- Accommodation arranged over two floors
- Rear garden
- Ideal for first-time buyers or investors
- Close to local amenities, schools and transport links



TOTAL FLOOR AREA : 756 sq.ft. (70.3 sq.m.) approx.

Whilst every attempt has been made to ensure the accuracy of the floorplan contained here, measurements of doors, windows, rooms and any other items are approximate and no responsibility is taken for any error, omission or mis-statement. This plan is for illustrative purposes only and should be used as such by any prospective purchaser. The services, systems and appliances shown have not been tested and no guarantee as to their operability or efficiency can be given.
Made with Metropix ©2026