



Price
£425,000

Freehold

3x  1x  1x 

**Batemans Road,
Woodingdean, Brighton,
East Sussex, BN2**

OVER 60?

Secure this property
for up to **59% less!**

cubitt & west
Helping you move forwards



Main features

- Immaculately presented 3 storey house
- Large lounge/diner with kitchen adjacent
- All bedrooms are double in size
- 4-piece luxury family bathroom, separate cloakroom
- Garage, driveway, tiered rear garden, lovely views

Accommodation

GROUND FLOOR

Porch
 Hallway
 Lounge/Diner : 27'7 x 11'10 (8.41m x 3.61m)
 Kitchen: 10'0 x 8'10 (3.05m x 2.69m)
 Cloakroom

FIRST FLOOR

Landing
 Bedroom 1: 13'11 x 9'0 (4.24m x 2.75m)
 Bedroom 2: 11'2 x 8'9 (3.41m x 2.67m)
 Bedroom 3: 8'10 x 4'4 (2.69m x 1.32m)
 Bathroom

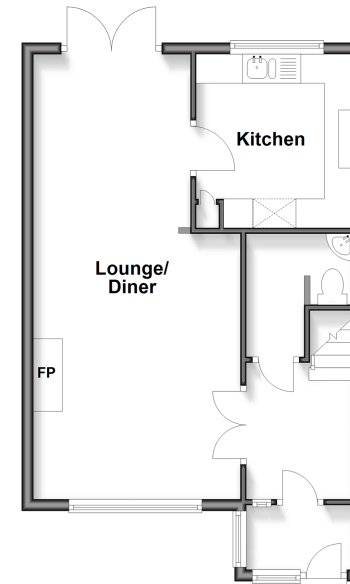
LOWER GROUND FLOOR

Garage

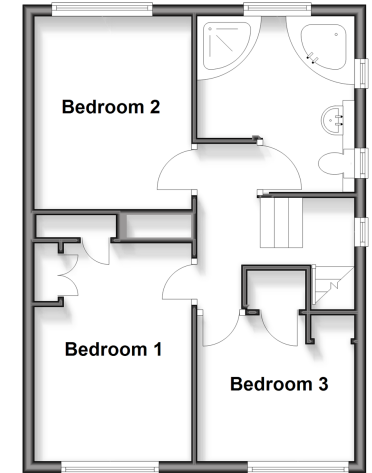
OUTSIDE

Driveway
 Rear Garden

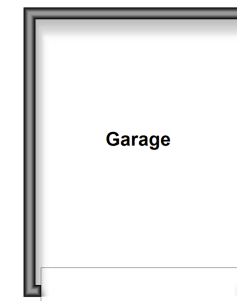
Ground Floor
Approx. 44.3 sq. metres (477.0 sq. feet)



First Floor
Approx. 42.1 sq. metres (453.0 sq. feet)



Lower Ground Floor
Approx. 16.3 sq. metres (175.1 sq. feet)



Call Woodingdean - 01273 606121 ■ cubittandwest.co.uk

■ Through a Homewise Home For Life Plan people aged 60+ can secure this property for up to 59% less, by purchasing a Lifetime Lease



32508310/20260401/DS/JON