



Hillcrest Road, W5

£1,150,000

Substantial three-storey townhouse extending to over 2,100 sq ft of internal space, offering four/five bedrooms, two bathrooms and flexible reception room. Offering scope to modernise, it provides an excellent blank canvas with huge potential to create a superb family home. South-facing garden, rear-access garage and off-street parking.

Ideally located less than a mile from Ealing Broadway station (Elizabeth line, London Underground Central line and London Underground District line), with Hanger Lane station and Park Royal station also nearby. The property falls within the catchment area for Ada Lovelace Church of England High School and close to excellent local schools including Montpelier Primary School and St Augustine's Priory.

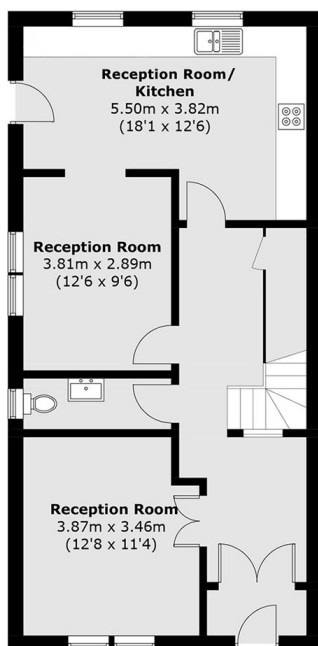
Features

- Four/Five Bedrooms
- Three Receptions
- Two Bathrooms
- No Onward Chain
- South Facing Garden
- Garage & Off Street Parking

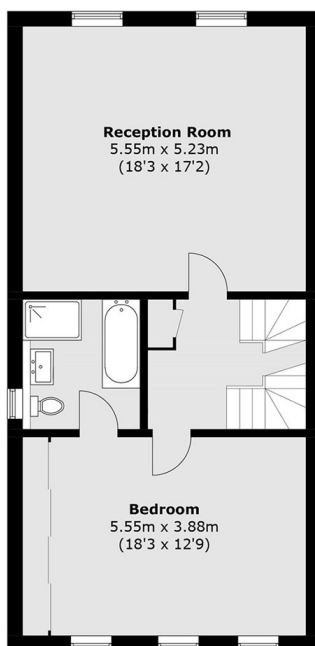
Hillcrest Road, London, W5



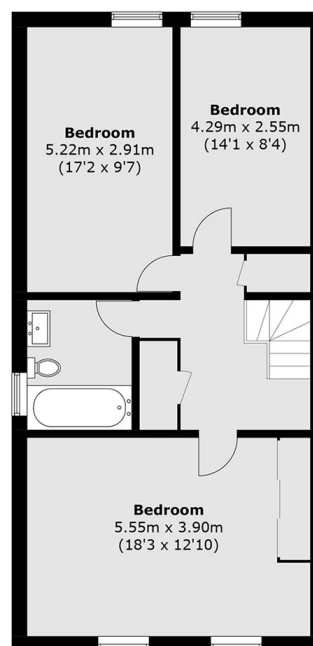
Ground Floor



Ground Floor



First Floor



Second Floor

Total area (approx.): 199.2 sq. m (2,144.0 sq. ft)
Garage area (approx.): 12.6 sq. m (135.6 sq. ft.)