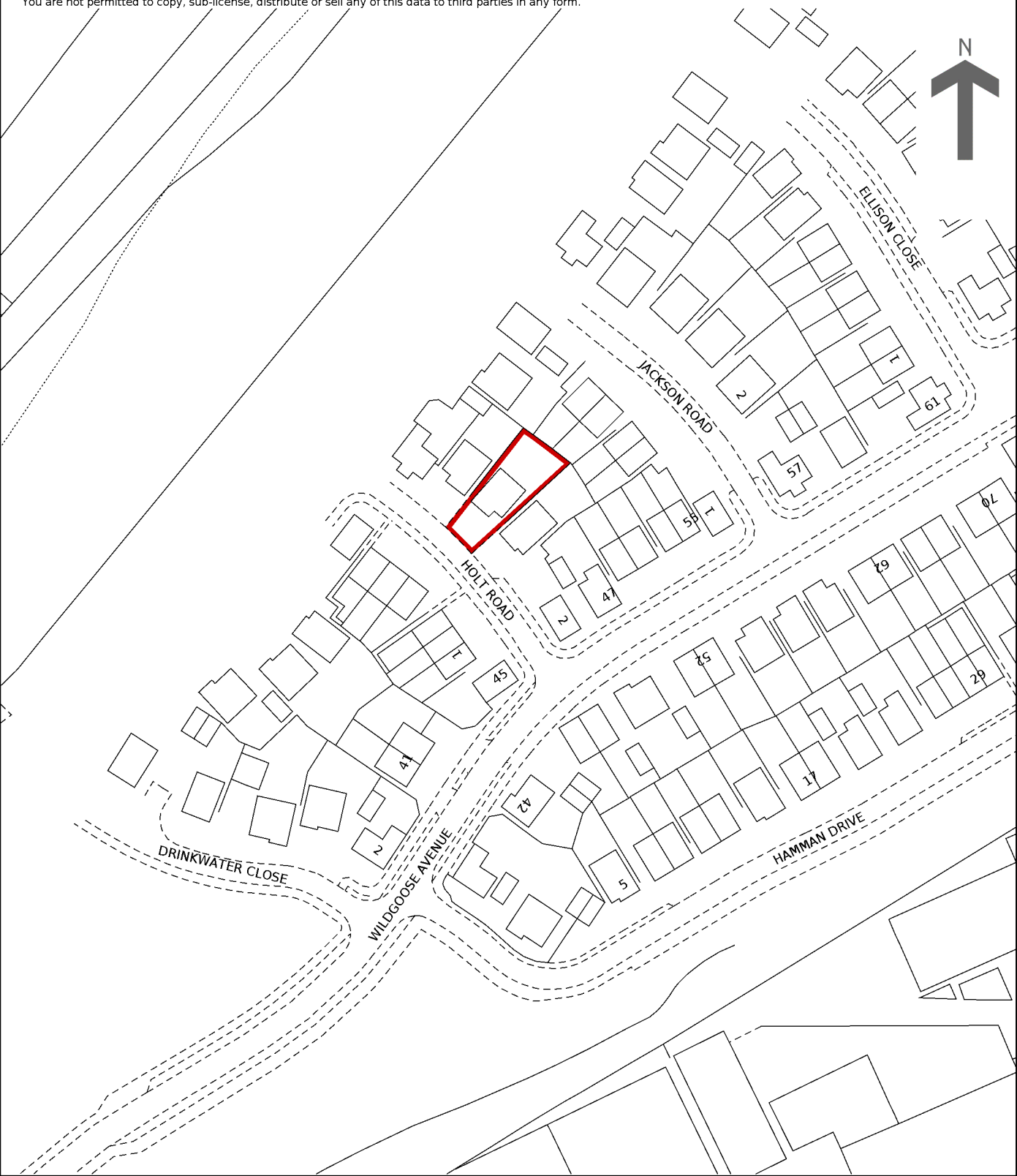




© Crown copyright and database rights 2024 Ordnance Survey AC0000851063.
You are not permitted to copy, sub-license, distribute or sell any of this data to third parties in any form.



This is a print of the view of the title plan obtained from HM Land Registry showing the state of the title plan on 10 April 2026 at 13:46:47. This title plan shows the general position, not the exact line, of the boundaries. It may be subject to distortions in scale. Measurements scaled from this plan may not match measurements between the same points on the ground.

This title is dealt with by HM Land Registry, Birkenhead Office.