



Westbourne Terrace, W2

£725 Per week

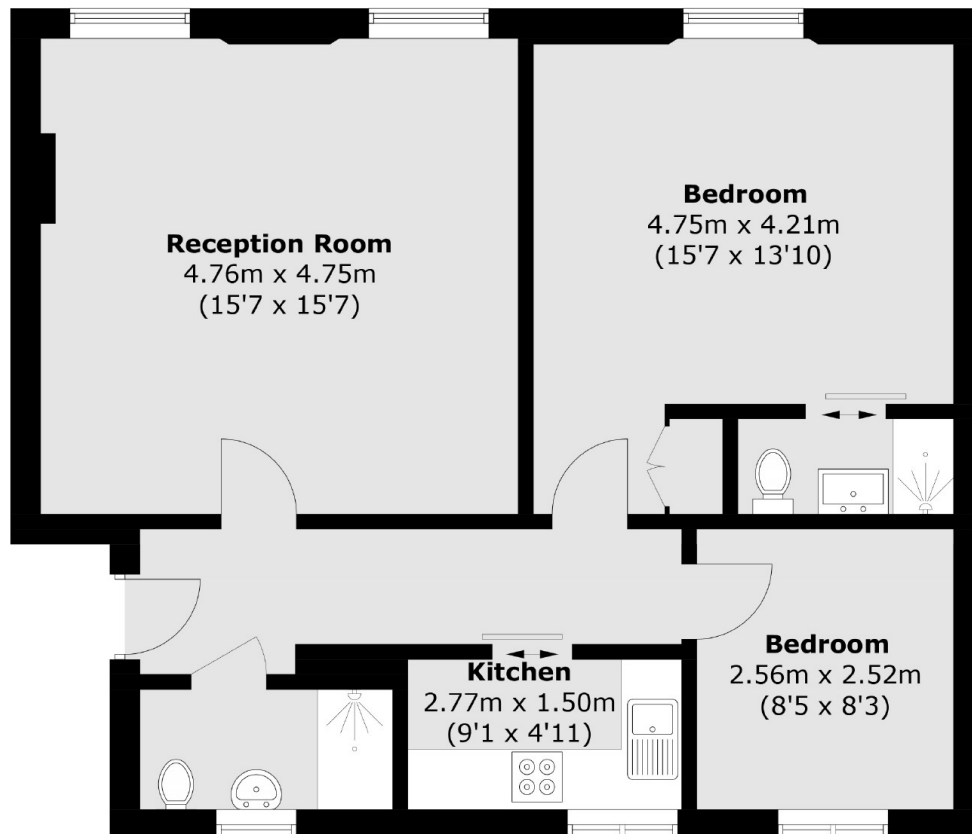
A two double bedroom, stucco fronted period conversion on the second floor with lift access. The property has two bathrooms, wood flooring and high ceilings.

Near to the shops, bars and restaurants of Westbourne Grove, the closest tube is Paddington and Hyde Park is less than half a mile away.

Features

- Two Bedrooms
- Two Bathrooms
- Lift Access
- Wooden Floors
- High Ceilings
- Spacious Reception

Westbourne Terrace,
London, W2



Total area (approx.): 67.3 sq. m (724.4 sq. ft)