



Cemetery Road, Leabrooks, Alfreton, DE55 1LD

Asking Price Of £119,950

- NEW TO THE MARKET WITH NO UPWARDS CHAIN - WELL PRESENTED TWO BEDROOM SEMI DETACHED WITH A BREAKFAST KITCHEN AND AN ENCLOSED REAR COURTYARD - SMARTMOVE HOMES are delighted to bring to the market this excellent property in Leabrooks briefly comprising of a living room and breakfast kitchen to the ground floor. To the first floor landing there are two bedrooms and a family bathroom, outside there is an enclosed rear courtyard garden. To book an internal inspection please contact SMARTMOVE HOMES as soon as possible.

Property Description

GROUND FLOOR

LIVING ROOM

Door and window to front elevation with radiator and electric fire place and brick surround.

BREAKFAST KITCHEN

Modern fitted breakfast/kitchen comprising of matching wall and base units, work surface with single sink and drainer, integrated electric hob and electric oven with extractor fan above, space for under counter fridge and space and plumbing for a washing machine. Window to rear elevation and door with obscured glass to side elevation.

FIRST FLOOR

FIRST FLOOR LANDING

MASTER BEDROOM

Double bedroom with window to front elevation, radiator and access to over stairs storage cupboard.

BEDROOM TWO

Window to rear elevation and radiator.

BATHROOM

Three piece bathroom suite comprising of WC, wash basin, bath, radiator, tiled walls and obscured window to rear elevation.





OUTSIDE

REAR COURTYARD

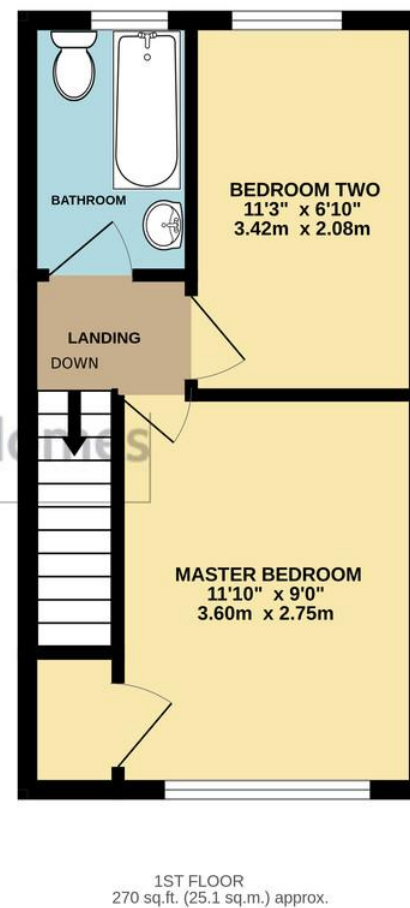
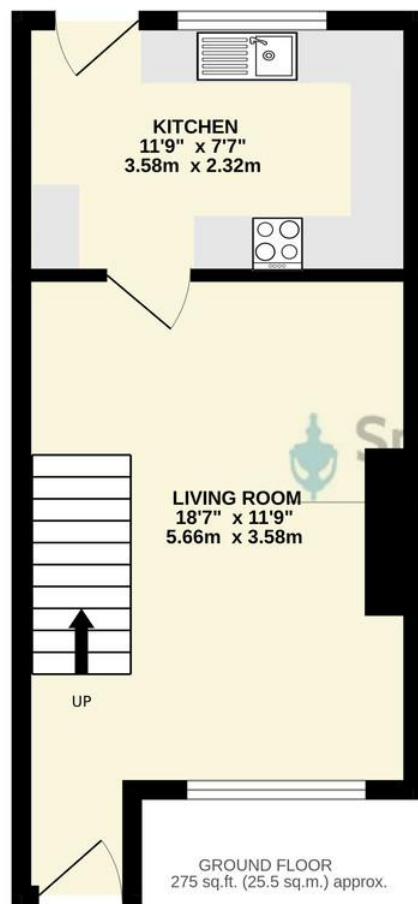
Courtyard Garden to rear.

ADDITIONAL INFORMATION

Tenure: Freehold

EPC: D





TOTAL FLOOR AREA : 545 sq.ft. (50.6 sq.m.) approx.

Whilst every attempt has been made to ensure the accuracy of the floorplan contained here, measurements of doors, windows, rooms and any other items are approximate and no responsibility is taken for any error, omission or mis-statement. This plan is for illustrative purposes only and should be used as such by any prospective purchaser. The services, systems and appliances shown have not been tested and no guarantee as to their operability or efficiency can be given.
Made with Metropix ©2025

1 High Street, Ripley,
Derbyshire, DE5 3AA

www.smartmovehomes.co.uk
01773 570055
sales@smartmovehomes.co.uk

Agents Note: Whilst every care has been taken to prepare these sales particulars, they are for guidance purposes only. All measurements are approximate and for general guidance purposes only and whilst every care has been taken to ensure their accuracy, they should not be relied upon and potential buyers are advised to recheck the measurements

