



Fairmont Avenue, E14

£634 Per week

An exceptionally large two bedroom apartment on the fourth floor of this popular development. This river facing apartment has floor to ceiling windows, wooden flooring and on-site residents swimming pool and gym.

New Providence Wharf is moments from the shops, bars and restaurants of central Canary Wharf, in addition to being within moments of Blackwall DLR service.

Features

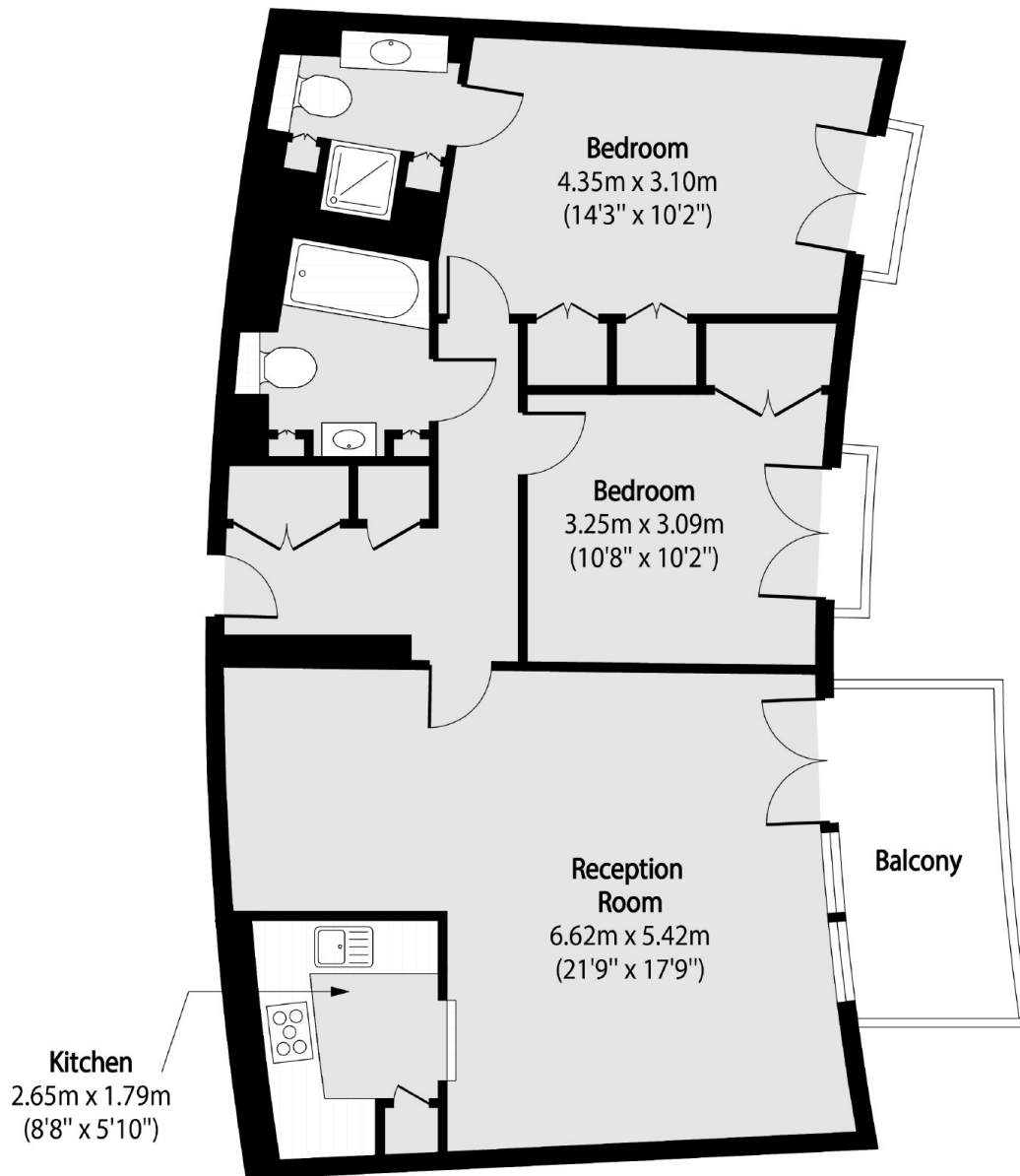
- Fourth Floor
- Two Bedrooms
- Two Bathrooms
- Parking Space
- Residents Facilities
- Furnished



Fairmont Avenue, E14



Fairmont Avenue,
London, E14



Total area (approx): 80.85 sq m (870 sq. ft)

Balcony total area (approx): 6.67 sq m (72 sq. ft)