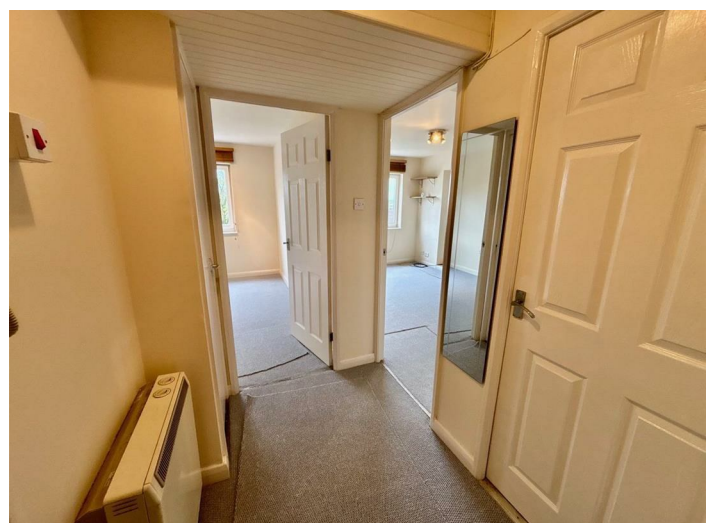


# 1 Bed Apartment

# Offers in the region of £55,000

 Norbury Close, Allestree, Derby, DE22 2QF



[www.phillipsandco.co.uk](http://www.phillipsandco.co.uk) | 01332 40 25 25

**Phillips  
& Co**  
EST. 2012  
MY PAD GROUP

# 1 Bed Apartment

# £55,000

 Norbury Close, Allestree, Derby, DE22 2QF

IMMEDIATE POSSESSION - NO UPWARD CHAIN. Situated on the third floor of the ever popular Kedleston Court, this well-presented one-bedroom apartment offers stylish, modern living following a refurbishment. The property provides a fantastic opportunity for first-time buyers looking to step onto the property ladder, as well as investors seeking a ready-to-let addition to their portfolio, with current rental prices achieving between £625.00 and £700.00 per calendar month.

The accommodation is bright and well-proportioned, featuring a neutral finish throughout, with upgraded fixtures, newly fitted carpets and fittings that enhance both comfort and appeal. Positioned in the popular residential area of Allestree, the apartment benefits from excellent local amenities, transport links, and green spaces nearby.

Combining convenience, value, and move-in-ready condition, this apartment represents an excellent opportunity not to be missed.

The property is sold leasehold. Council tax band A. Energy rating D.

## Communal Reception Hall

With lift and staircase serving all floors.

## Reception Hall



Having timber entrance door, airing cupboard (housing the pre insulated cylinder), security intercom telephone and full height cloaks cupboard.

## Living Room 14'4" x 10'2" (4.39 x 3.12)



Having television connection point, UPVC double glazed window (commanding far reaching views) and UPVC opaque double glazed door leading to the shared balcony. An open arch leads to the:-



## Fitted Kitchen 9'1" x 6'7" (2.79 x 2.01)



Having been refitted to provide a range of shaker style wall and base cupboards with integrated black glass four ring ceramic hob, electric oven and grill, canopy extractor hood and down lighter, space and plumbing for automatic washing machine (having free standing washing machine in situ) and complimentary ceramic part tiled walls with contrasting ceramic tiled floor.

## Bedroom 11'4" x 9'4" (3.47 x 2.87)



Having a built in wardrobe and UPVC double glazed window (again commanding far reaching views).



[www.phillipsandco.co.uk](http://www.phillipsandco.co.uk) | 01332 40 25 25

**Phillips  
& Co**  
EST. 2012  
MY PAD GROUP

# 1 Bed Apartment

£55,000

 Norbury Close, Allestree, Derby, DE22 2QF

## Bathroom



Having white three piece suite with Triton electric shower over bath, complimentary ceramic tiled walls with contrasting ceramic tiled floor, chrome heated towel rail and wall mounted extractor fan.

## Outside



### **Please note.**

The property is currently going through probate.

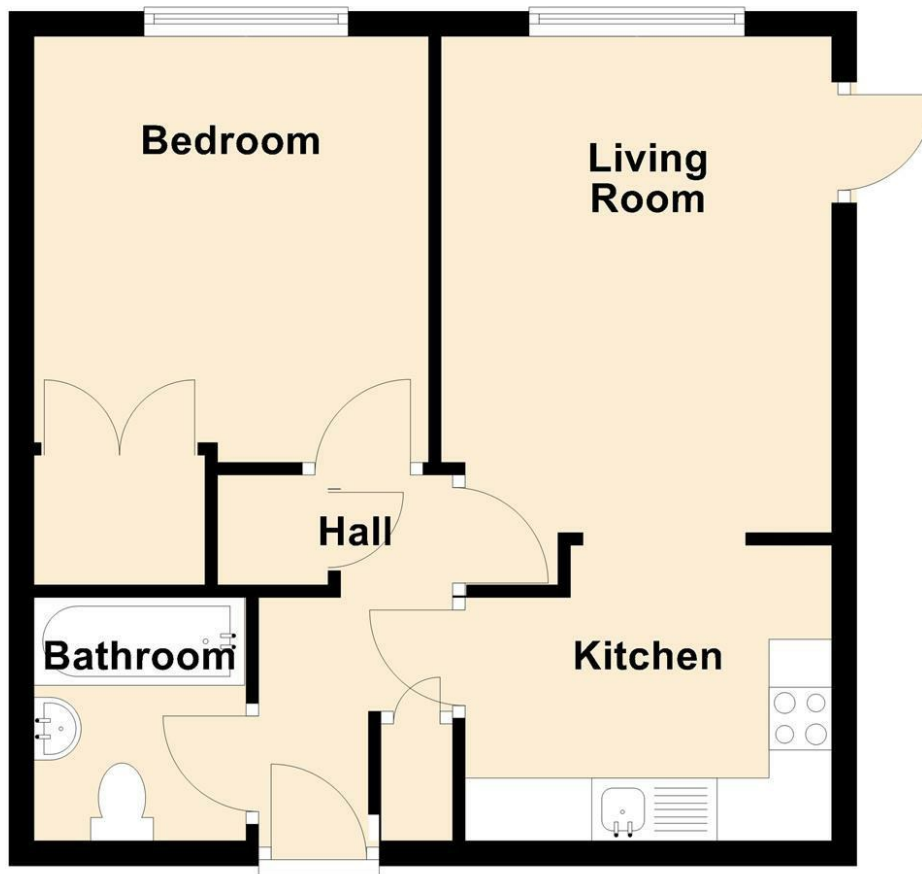
[www.phillipsandco.co.uk](http://www.phillipsandco.co.uk) | 01332 40 25 25

# 1 Bed Apartment

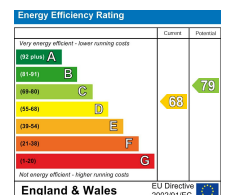
# £55,000

Norbury Close, Allestree, Derby, DE22 2QF

## Third Floor



You may download, store and use the material for your own personal use and research. You may not republish, retransmit, redistribute or otherwise make the material available to any party or make the same available on any website, online service or bulletin board of your own or of any other party or make the same available in hard copy or in any other media without the website owner's express prior written consent. The website owner's copyright must remain on all reproductions of material taken from this website.



www.phillipsandco.co.uk | 01332 40 25 25

