

# Courtenay House, New Park Road | Brixton



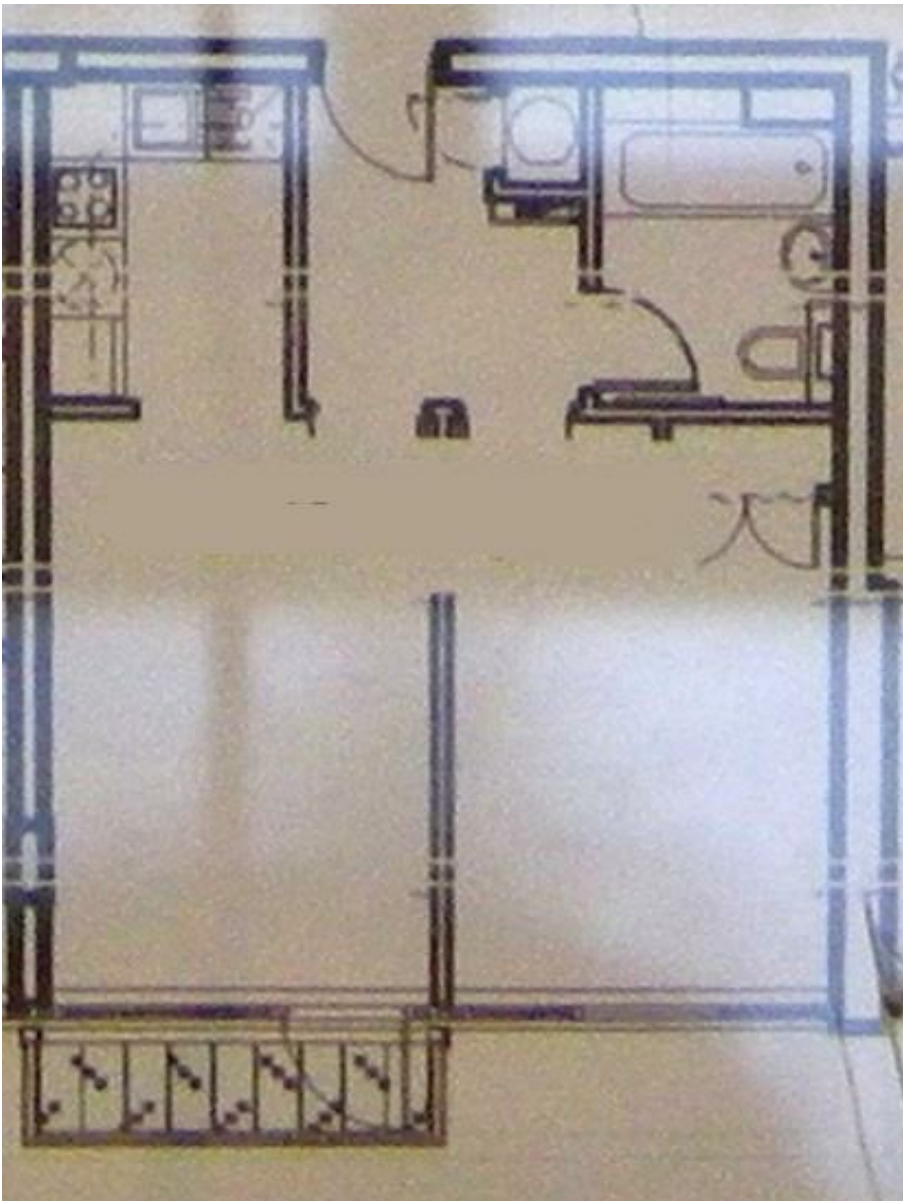
**£1,700 Per Month**

- One bedroom apartment
- Balcony
- Communal roof terrace
- Bicycle storage
- Leasehold covenants may apply
- Amazing Views

# Courtenay House, New Park Road | Brixton



A fantastic one bedroom apartment with a balcony and breath-taking views over the London skyline. Situated on the sixth floor of this modern purpose built block (with lift), the property features an open plan kitchen/reception, double bedroom with built-in storage and a bathroom. Courtenay House is a sought after development towards the top of Brixton Hill and it comes with a huge communal roof terrace, care taker & bicycle storage. Brixton town centre which is home to Brixton Village, Ritzy Cinema, Brixton Academy and numerous bars & shops is within 15-20 minute walk or a short bus ride. The flat is available 27th July as part furnished. Lambeth Band C.



Energy Efficiency Rating		Current	Potential
Very energy efficient - lower running costs			
(92 plus) A			
(81-91) B			
(69-80) C		72	81
(55-68) D			
(39-54) E			
(21-38) F			
(1-20) G			
Not energy efficient - higher running costs			
England & Wales		EU Directive 2002/91/EC	
Environmental Impact (CO <sub>2</sub> ) Rating		Current	Potential
Very environmentally friendly - lower CO <sub>2</sub> emissions			
(92 plus) A			
(81-91) B			
(69-80) C			
(55-68) D			
(39-54) E			
(21-38) F			
(1-20) G			
Not environmentally friendly - higher CO <sub>2</sub> emissions			
England & Wales		EU Directive 2002/91/EC	

These particulars are designed to provide a guideline only and cannot be relied upon as a statement of fact. The description represents the opinion of the author and is not intended to provide false or misleading information. Any prospective purchaser should make further checks on its accuracy. All measurements are approximate and floorplans are for representation only.



**Eden Harper**  
 3 Arlington Parade, Brixton Hill, Brixton, SW2 1RH  
**0207 274 3111**  
 brixsales@edenharper.com  
 www.edenharper.com