



19 White Horses, Marine Drive, Barton on Sea, New Milton,

£325,000

Mitchells

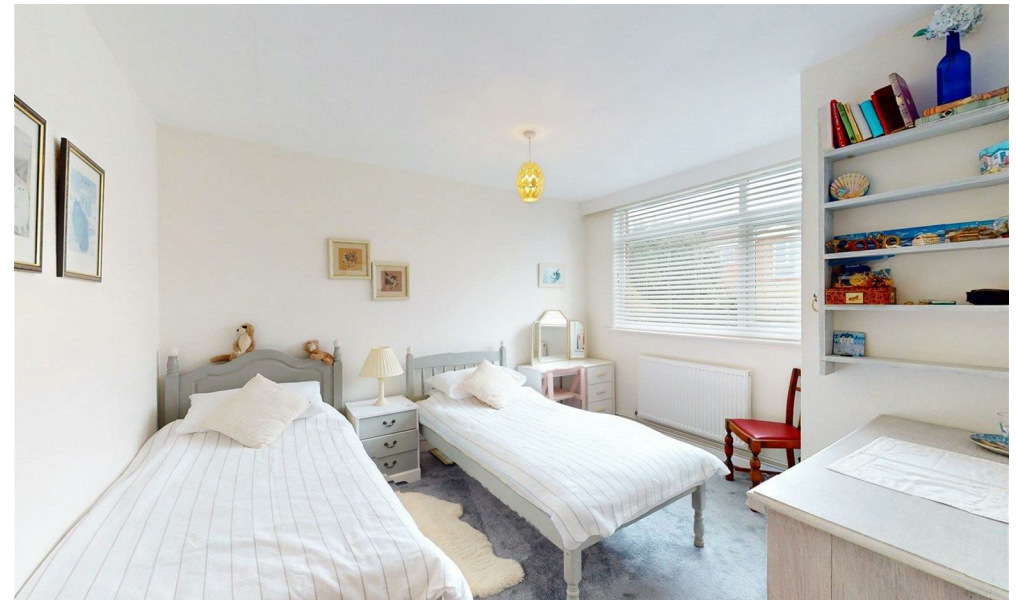
1963 — TODAY



*19 White Horses Marine
Drive
Barton on Sea
New Milton
Hampshire
BH25 7EQ*

A well-presented two double bedroom ground floor apartment enviably located on a popular clifftop development and benefitting from south westerly sea and coastal views. Other features of the property include a share in the freehold, a modern kitchen, a useful separate utility room, a garage, ample communal parking, bright and airy accommodation and only a few steps from the beautiful Barton On Sea clifftop and beach. The property is offered with no forward chain and a viewing is highly recommended.

- Porch
- Entrance Hall
- Sitting/Dining Room
- Kitchen
- Utility Room
- Two Double Bedrooms
- Bathroom
- Communal Gardens
- Garage
- Communal Parking



The Property

Entrance porch with UPVC double glazed front door and attractive Herringbone flooring.

Entrance hall with storage cupboard, separate airing cupboard and attractive Herringbone flooring.

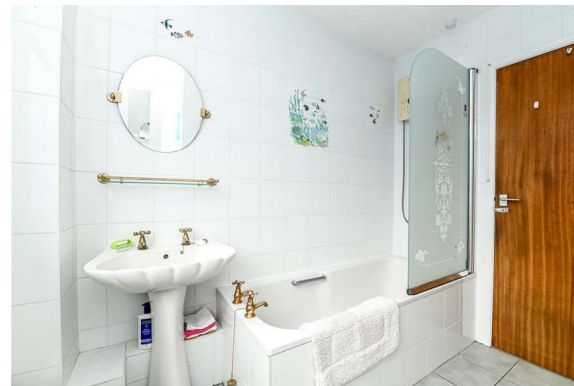
A double aspect sitting/dining room with feature Herringbone flooring and lovely far reaching sea and coastal views.

Modern kitchen fitted with a range of cream wall and base units with soft closing drawers and doors and contrasting stone effect worktop with an inset sink unit with mixer tap over, integrated double oven, gas hob and extractor, wall mounted Worcester gas fired boiler concealed in cupboard, space for washing machine and tall fridge/freezer, tiled flooring and a lovely outlook to the rear over the communal gardens.

Useful separate utility room with further storage cupboards with a stone effect worktop over, space for tumble dryer, timber effect flooring and a fully glazed outside wall with access and a lovely outlook over the communal grounds.

Two double bedrooms with the master bedroom benefitting from sea and coastal views.

Bathroom fitted with a white suite comprising a panel bath with an independent Mira shower over and glass shower screen, wash basin, WC, part tiled walls and tiled flooring.





Gardens & Grounds

White Horses sits in well maintained communal gardens and grounds, the upkeep of which is paid for out of the annual maintenance.

There is a garage in nearby block with an up and over door.

Ample casual car parking.



Services

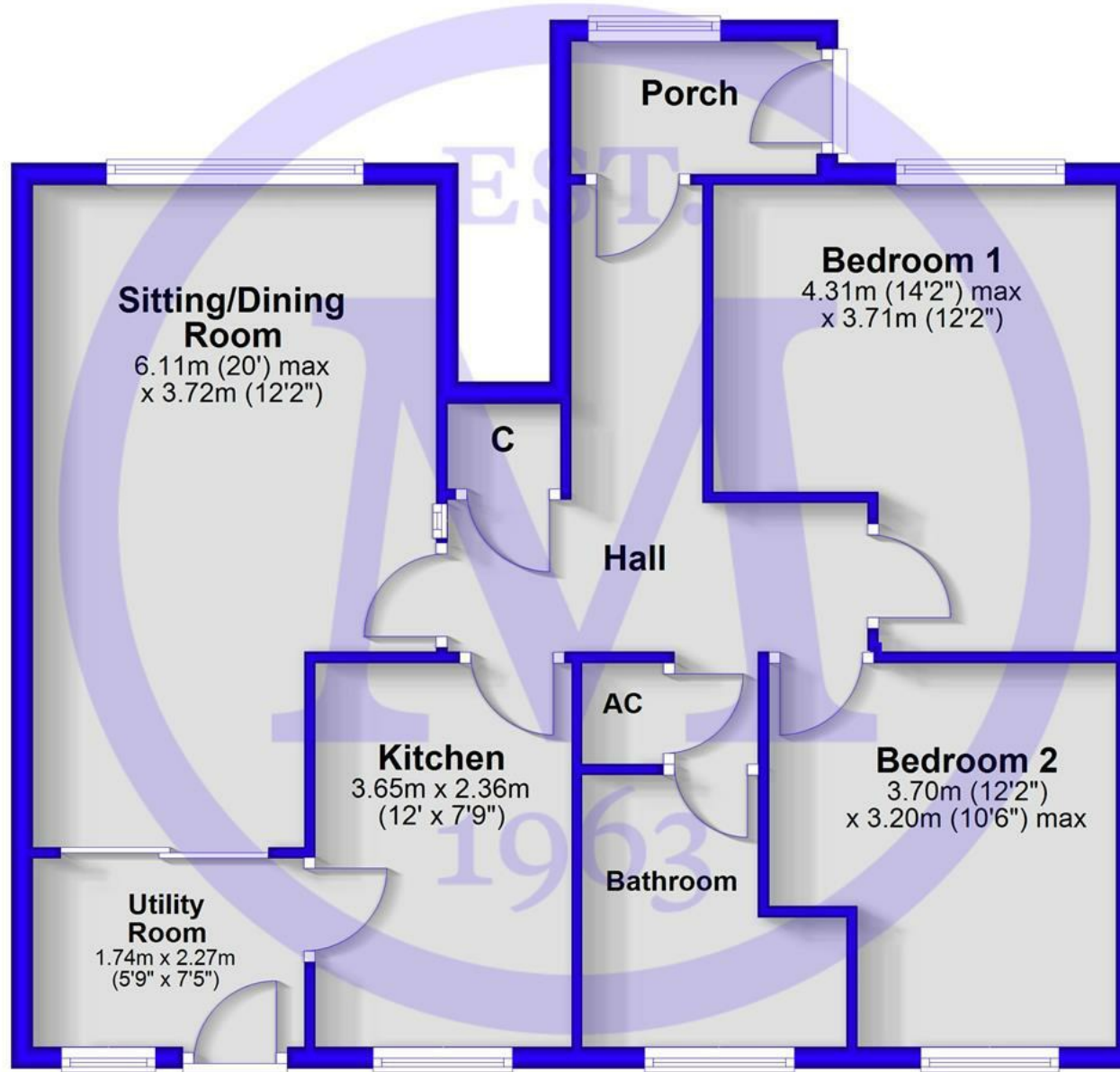
Mains gas, electricity, water and drainage

Council Tax Band: D

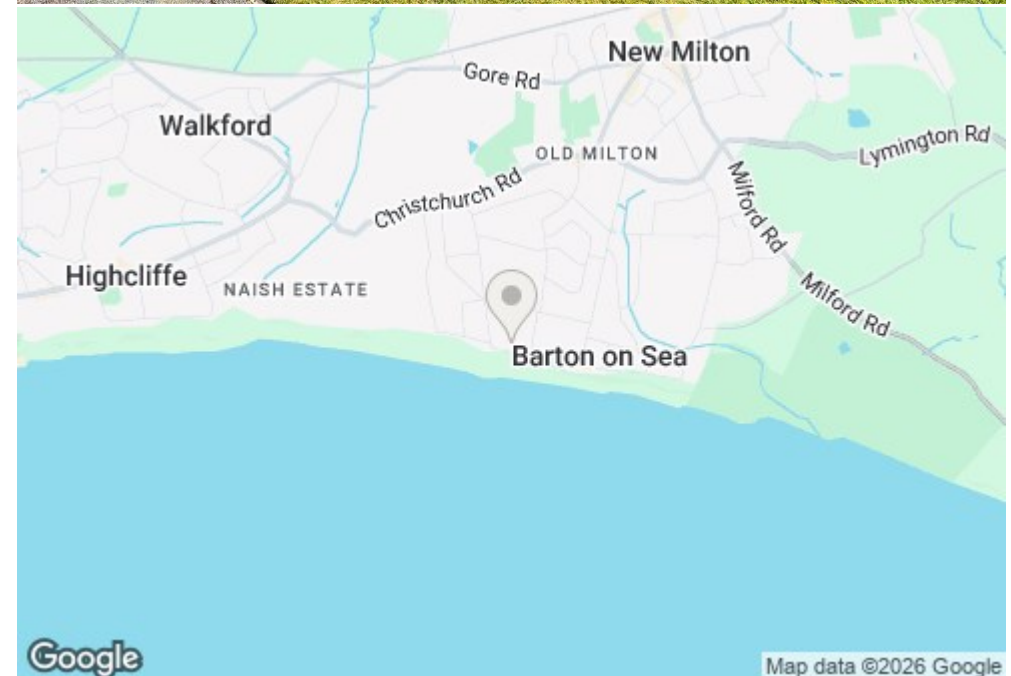
Energy Performance Certificate (EPC) Rating: C

Ground Floor

Approx. 79.8 sq. metres (859.5 sq. feet)



Total area: approx. 79.8 sq. metres (859.5 sq. feet)



Situation

Barton on Sea, a charming suburb of New Milton, enjoys a prime location along a picturesque stretch of the Solent coastline. With sweeping views across Christchurch Bay to the Isle of Wight and access to stunning coastal walks in both directions, it's a haven for nature lovers and outdoor enthusiasts. Its popularity is further enhanced by proximity to the open landscapes of the New Forest National Park, direct mainline rail links to London Waterloo, and a range of high-quality amenities. These include excellent schools, fine dining at the renowned Chewton Glen Hotel and Pebble Beach restaurant, and a 27-hole links-style golf course. Offering a perfect blend of natural beauty, convenience, and luxury, Barton on Sea continues to attract those seeking an exceptional coastal lifestyle.



Mitchells.uk.com
info@mitchells.uk.com
01425 616411

Centenary Buildings
8-10 Old Milton Road
New Milton
Hampshire
BH25 6DT

Mitchells
1963 — TODAY

