



2 Bedroom semi detached Bungalow located in a desirable location with all amenities within easy reach.

£1,800 Per month

Hazell Holland



Hazell Holland

Hazell Holland



Hazell Holland
SALES & LETTINGS

Kynaston Road
Orpington
Kent
BR5 4JZ

Entrance Hall

Lounge

15'8 x 11'8 into bay
(4.78m x 3.56m into bay)

Kitchen

10'1 x 8'1 (3.07m x 2.46m)

Conservatory

11'2 x 11'0 x 7'2 (3.40m x 3.35m x 2.18m)

Bedroom One

12'1 x 9'9 (3.68m x 2.97m)

Bedroom Two

9'5 x 8'1 (2.87m x 2.46m)

Bathroom

9'5 x 8'1 (2.87m x 2.46m)

Garden

50' (15.24m)

Garage

18'0 x 7'0 (5.49m x 2.13m)

Parking

- 2 Bedroom semi detached Bungalow
- 15'8 x 11'8 Lounge
- 10'0 x 8'1 Modern fitted kitchen with oven, hob, extractor and integrated fridge/freezer
- White three piece bathroom
- 50' Rear garden
- Off street parking and garage
- Double glazing
- Gas central heating
- Convenient distance to High Street, station, schools and retail parks
- Available from end April





Hazell Holland

Positioned in the sought-after area of Kynaston Road, Orpington, Hazell Holland welcome this stunning two-bedroom semi-detached bungalow offering a delightful blend of comfort and modern living. Upon entering, you are welcomed into a spacious reception room that provides a warm and inviting atmosphere, perfect for relaxation or entertaining guests.

The property boasts a contemporary kitchen, equipped with modern appliances and ample storage, making it a joy for any home cook. The stylish bathroom has also been recently updated, ensuring a fresh and clean space for your daily routines.

With two well-proportioned bedrooms, this bungalow is ideal for small families or couples. The layout is practical and functional, providing a comfortable living experience.

Outside, the property features a garage and parking for two vehicles, a valuable asset in this popular location. The surrounding area is known for its friendly community and convenient amenities, making it an excellent choice for those seeking a peaceful yet accessible lifestyle.



Hazell Holland



Hazell Holland

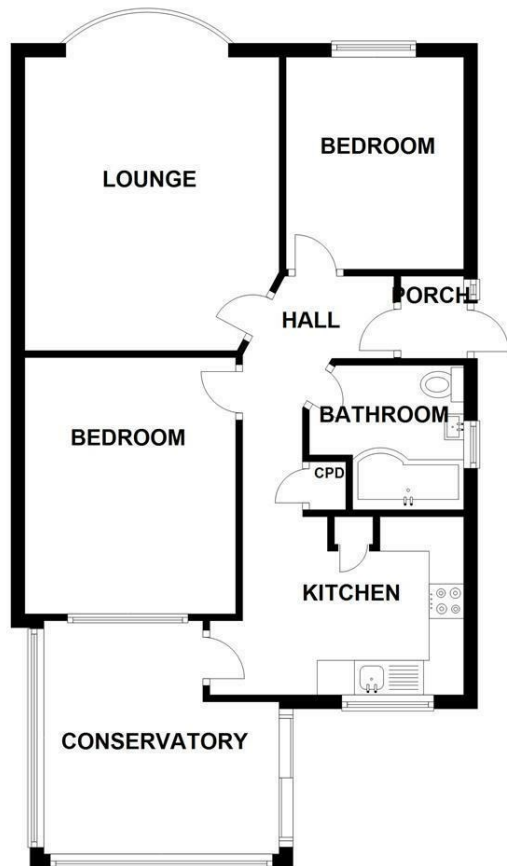
Available from the end of April, this bungalow presents a wonderful opportunity to settle into a lovely home in Orpington. Do not miss the chance to view this delightful property and envision your future here.

DEPOSIT - 5 WEEKS RENT £2,076.00

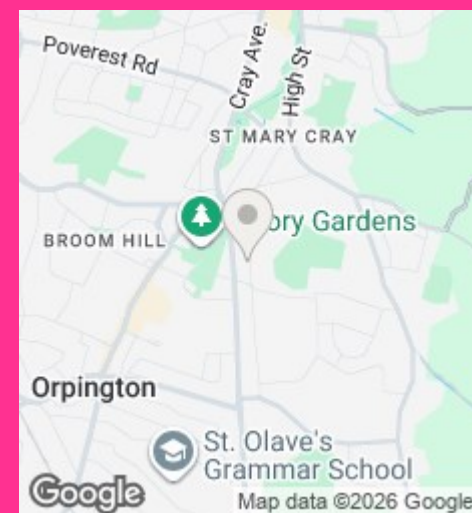
HOLDING DEPOSIT £415.00

PROSPECTIVE TENANTS WILL BE REQUIRED TO BE EARNING A MINIMUM TOTAL INCOME OF £54,000 PER ANNUM TO SHOW AFFORDABILITY FOR THIS PROPERTY. GUARANTORS WILL BE REQUIRED TO SHOW A MINIMUM TOTAL INCOME OF £64,800

GROUND FLOOR
APPROX. 66.5 SQ. METRES (715.7 SQ. FEET)



TOTAL AREA: APPROX. 66.5 SQ. METRES (715.7 SQ. FEET)



CONTACT

93 Crayford Road
Crayford
Kent
DA1 4AS

E: info@hazell-holland.co.uk
T: 01322 907907
www.hazell-holland.co.uk

All descriptions, dimensions, references to condition, and other details are provided in good faith and are believed to be correct at the time of publication. However, they do not constitute part of any offer or contract. Prospective purchasers should not rely on them as statements or representations of fact and must satisfy themselves, by inspection or otherwise, as to their accuracy. No person in the employment of Hazell Holland has any authority to make or give any representation or warranty in relation to this property.

Energy Efficiency Rating		Current	Potential
Very energy efficient - lower running costs			
(92 plus) A			
(81-91) B			87
(69-80) C			
(55-68) D		62	
(39-54) E			
(21-38) F			
(1-20) G			
Not energy efficient - higher running costs			
England & Wales		EU Directive 2002/91/EC	

