



## Dorney Court, SW6

£1,850 pcm



- One double bedroom
- Next to Putney Bridge Tube
- River views
- Private parking
- Private balcony
- Porter







## ABOUT THE PROPERTY

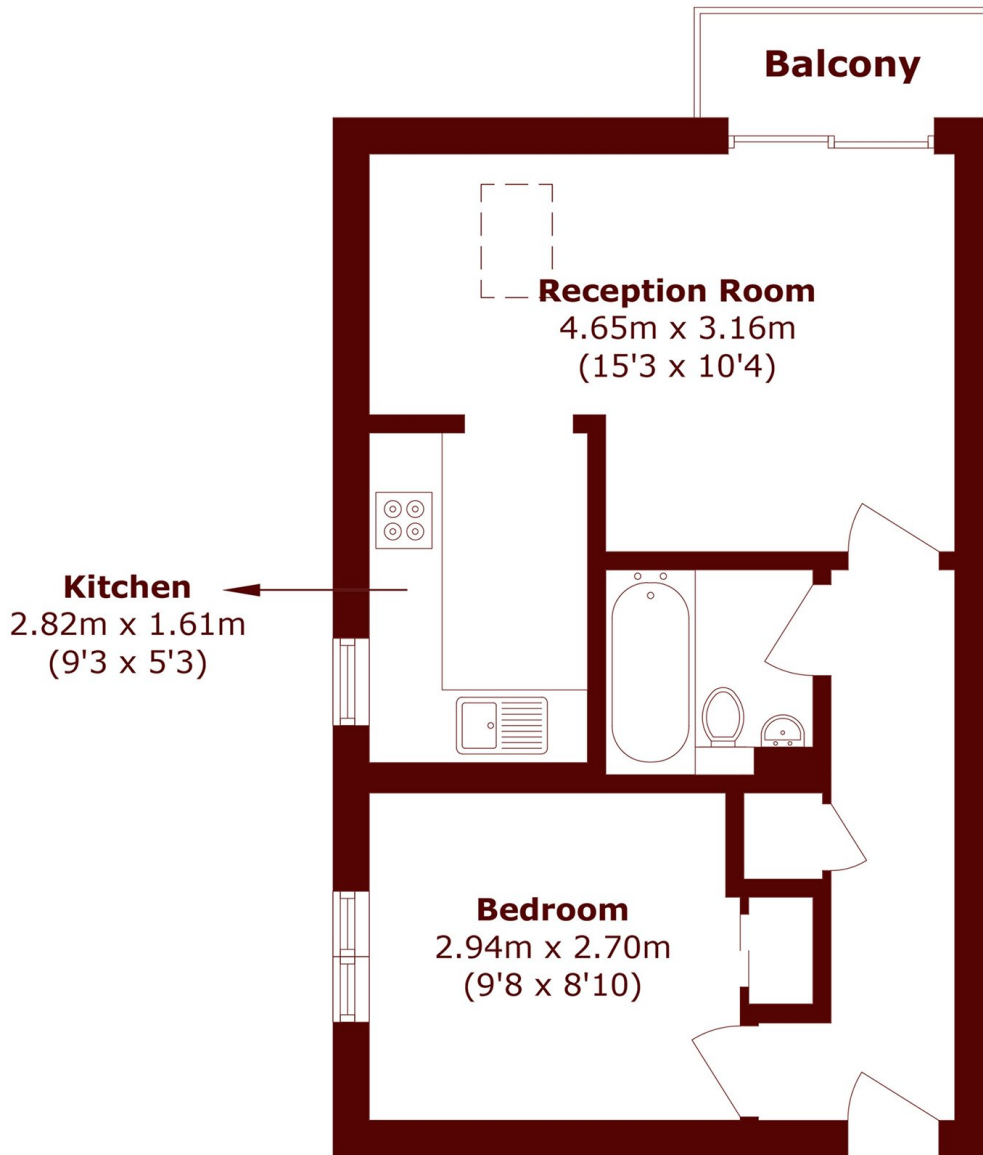
This lovely flat is set on the second floor of a gated development next to the River Thames. Accommodation comprises one double bedroom with good storage, modern bathroom, good size reception room and a separate, fully-fitted kitchen. The flat further benefits from a balcony and private, off-street parking.

Dorney Court is set within a gated development near the open spaces of Hurlingham Park and all the amenities Fulham, Parsons Green and Putney have to offer. Putney Bridge (District line) is a few minutes' walk away.



Council Tax Band - D





## Second Floor

Total area (approx.): 37.1 sq. m (399.3 sq. ft)

Balcony area (approx.): 2.2 sq. m (23.6 sq. ft)

### Marsh & Parsons Bishops Park

333 Fulham Palace Road,  
London, SW6 6TE  
020 7993 9888