



29 Grammar School Court, Ormskirk

Ormskirk

Guide Price £250,000

29 Grammar School Court

Ormskirk

Immaculate two-bedroom first-floor apartment with private entrance, stylish kitchen, spacious living, modern bathroom, fitted wardrobes, parking, and prime location near Ormskirk town centre. Council Tax band: C

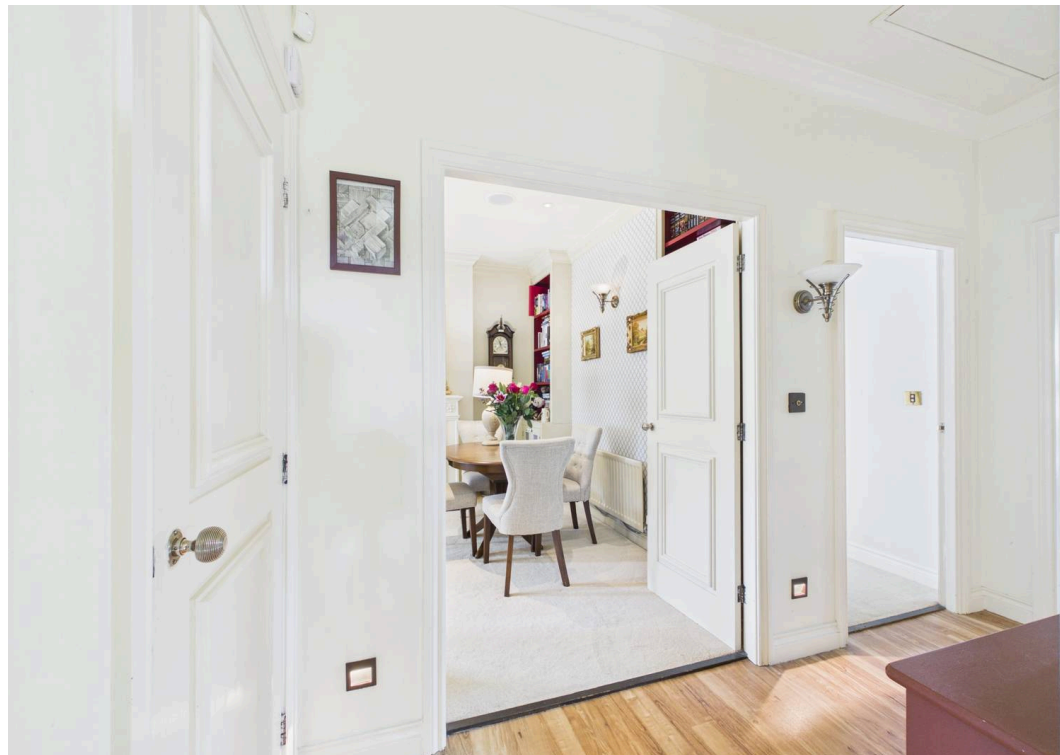
Tenure: Leasehold

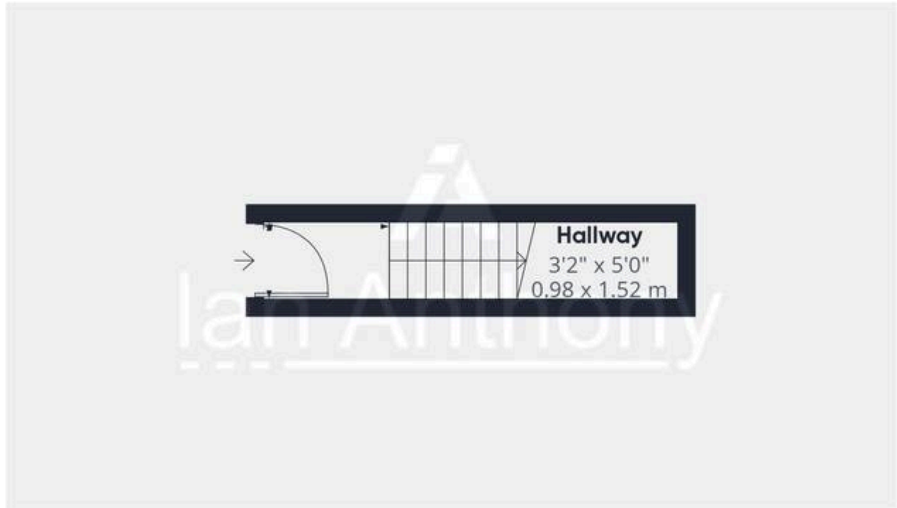
EPC Energy Efficiency Rating: C

EPC Environmental Impact Rating:

- IMMACULATELY PRESENTED THROUGHOUT
- TWO GOOD SIZED BEDROOMS
- MODERN BATHROOM
- BRIGHT AND SPACIOUS LIVING/DINER
- TWO ALLOCATED PARKING SPACES
- IDEAL FOR FIRST TIME BUYERS
- POPULAR ORMSKIRK LOCATION
- MODERN FITTED KITCHEN WITH INTEGRATED APPLIANCES



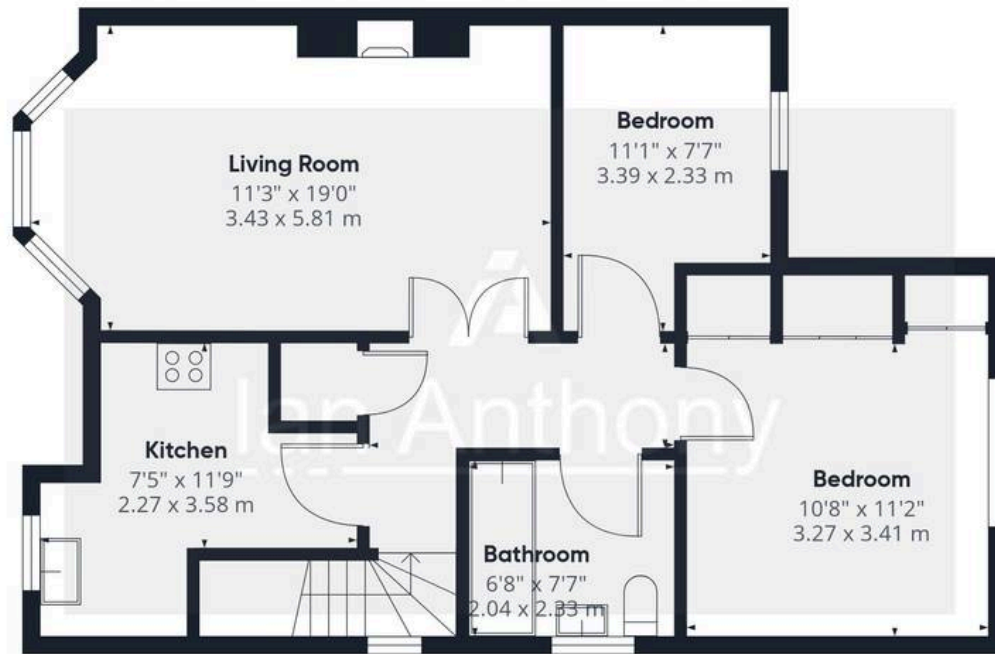




Ground Floor

Approximate total area⁽¹⁾

675 ft²
62.7 m²



Floor 1



(1) Excluding balconies and terraces

Calculations reference the RICS IPMS 3C standard. Measurements are approximate and not to scale. This floor plan is intended for illustration only.

GIRAFFE360



IAN ANTHONY

5 Burscough Street, Ormskirk - L39 2EG

01695580888

enquiries@iananthonyestates.co.uk

iananthonyestates.co.uk/

