

# BARKING RIVERSIDE

## Fielders Quarter

---

Floor Plans and Specification  
London Living Rent

L&Q



Computer generated image indicative only.

## London Living Rent A place to be, become and belong

Barking Riverside – a landmark development for London along the banks of the River Thames. Barking Riverside is a joint venture between L&Q and The Mayor of London, and is one of Europe's largest brownfield developments. Covering an impressive 443 acres, alongside 2km of beautiful south-facing River Thames frontage.

The masterplan will deliver over 10,000 new homes, the new Barking Riverside Overground station and Thames Clipper service, as well as commercial, retail and leisure facilities. This pioneering project will incorporate Envac, one of Europe's largest automated waste disposal systems. New schools, parks and river walkways will all become home to an estimated 30,000 people at this former 1920's power station site.

L&Q have a collection of London Living Rent homes available at this award-winning development.

London Living Rent is the perfect stepping stone to buying a home through Shared Ownership - with the discounted rent allowing tenants to save extra money each month to put towards a deposit\*.

\*Shared Ownership eligibility criteria will apply on your London Living Rent home, L&Q cannot guarantee you will meet future affordability requirements should you wish to buy a Shared Ownership home.

# London Living Rent from L&Q

London Living Rent (LLR) is designed for people who are currently renting and want to get onto the property ladder but can't afford to do so yet – either through Shared Ownership or on the open market.

London Living Rent lets you:

- Rent a home at a discounted rate compared to renting privately
- Save faster towards a deposit to buy your own home
- Rent the home you want to buy
- Buy a share of your home through Shared Ownership with L&Q within 10 years\*

Rent a brand-new and stylish home and you can benefit from:



Generously sized homes



Amenities and shops within walking distance



Excellent transport links close by

\*Shared Ownership eligibility criteria will apply on your London Living Rent home, L&Q cannot guarantee you will meet future affordability requirements should you wish to buy a Shared Ownership home.

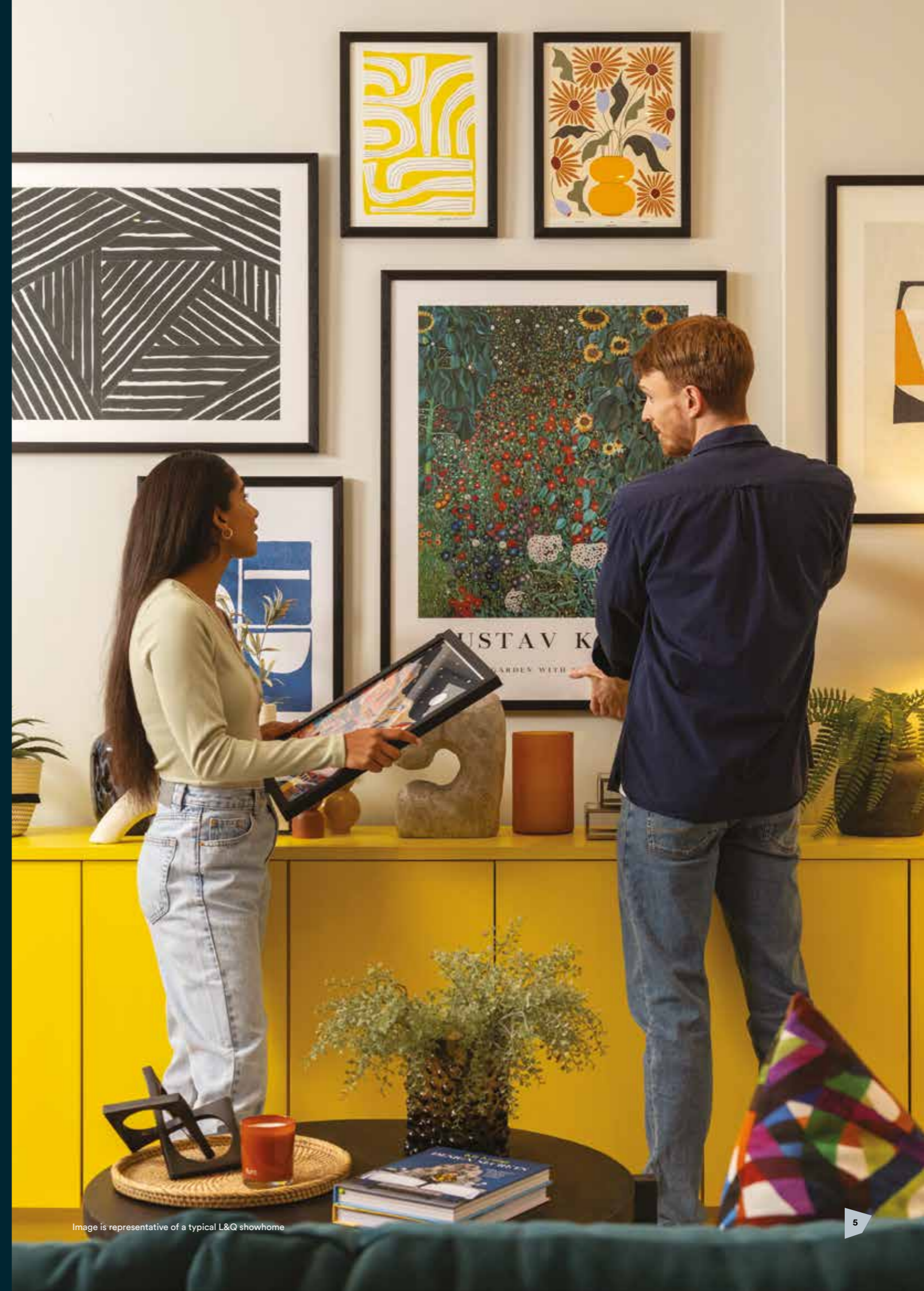


Image is representative of a typical L&Q showhome

# Specification

## Kitchen



- Modern kitchen cabinets with a complementary worktop and matching upstand
- Full height stainless steel splashback behind the hob
- Under cupboard lighting
- Stainless steel 1.5 bowl sink with accompanying chrome mixer tap
- Fully integrated appliances including oven, ceramic hob, fridge/freezer, dishwasher, and integrated extractor

## Bathroom



- Modern white sanitaryware including semi-recessed basin with chrome basin tap
- Floor mounted WC with concealed cistern
- Chrome dual flush plate for water efficiency
- Fitted mirror
- Pressed steel bath with bespoke bath panel
- Chrome towel radiator
- Homes without an en suite will include a hinged shower screen over the bath, chrome bath mixer tap, thermostatic shower valve with overhead shower and hair wash attachment
- Homes with an en suite will include a bath mixer tap with hair wash attachment mounted at low level

## En Suites



- Modern white sanitaryware including semi-recessed basin with chrome basin tap
- Floor mounted WC with concealed cistern
- Chrome dual flush plate
- Fitted mirror
- Chrome towel radiator
- White shower tray with fixed shower screen
- Thermostatic mixer valve with shower head and hair wash attachment

## Bedrooms



- Fitted carpet
- Fitted wardrobe with sliding doors to bedroom 1

## Wall & Floor Finishes



- White emulsion painted walls and ceilings to bedrooms and hallways
- White satin architraves and skirting boards
- Carpet flooring to bedrooms. Laminate floor to hall and kitchen/living/dining areas
- Ceramic large format floor and wall tiles to bathrooms and en suites

## Heating, Electrical & Lighting



- Low energy white LED downlights to kitchen/dining/living area and bathrooms and hallways
- Pendant lights to bedrooms, hallways and store cupboards
- Chrome switches and sockets
- Chrome shaver point in bathrooms
- Provision for Sky Q (subscription will be required)
- Mains operated ceiling mounted smoke/heat detector

## General



- Free standing Washing Machine located in store/utility cupboard
- White ladder internal doors
- Private garden, balcony, or terrace to every home
- Fob secure access to communal gardens
- Video door entry system\*
- Cycle storage



Photography of showhome, indicative only.

# Siteplan



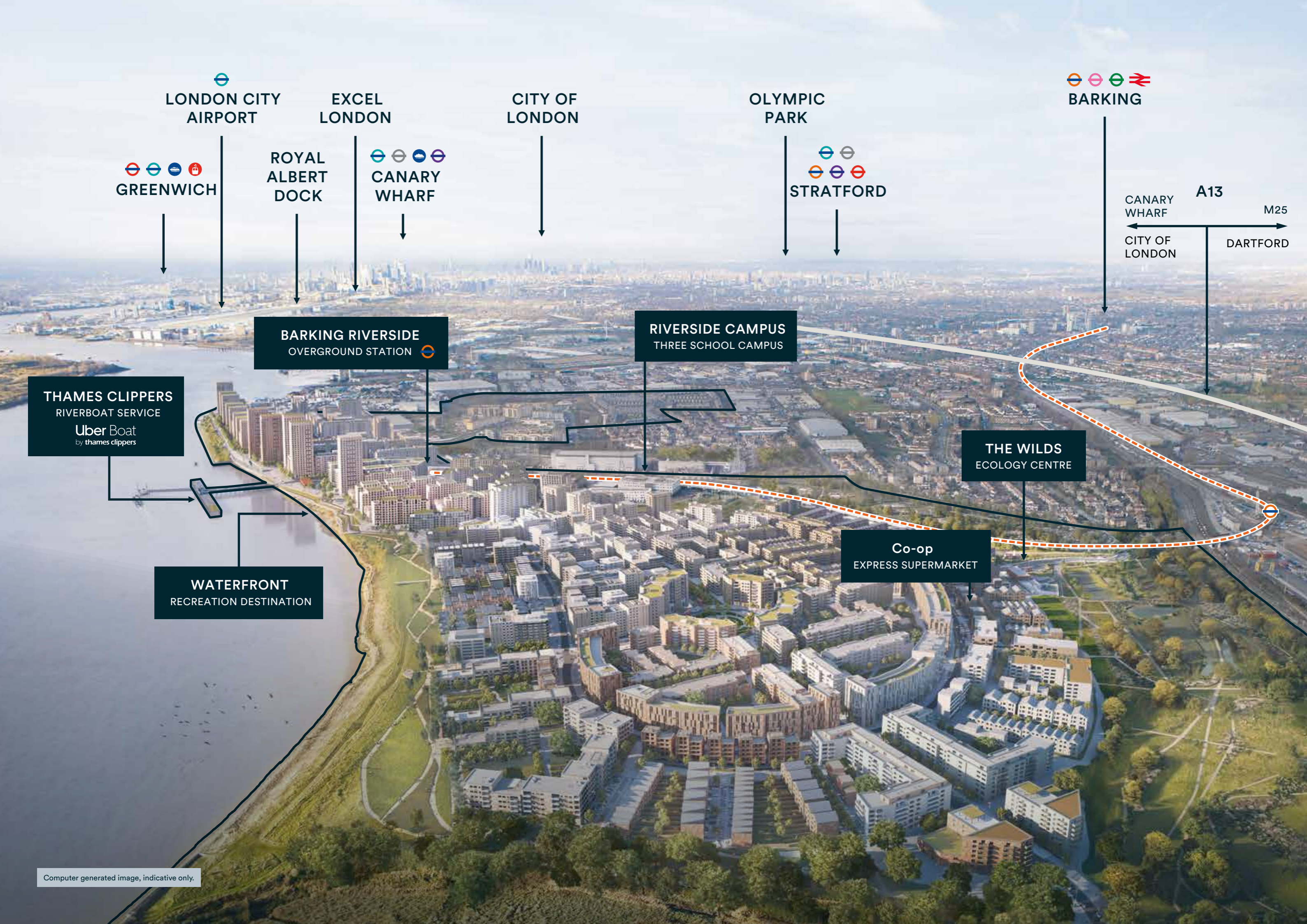
## Property Key

London Living Rent

Private Sale

C/S Cycle Store

For further clarification regarding specific individual flats, please ask our Lettings Associates. Any depiction of the layout does not show details of gradients of land, boundary treatments, local authority street lighting or landscaping. It is our intention to build in accordance with this layout including the locations of Market Sale, Shared Ownership, London Living Rent, Private Rent and Affordable Rent properties (known as tenures). However, there may be occasions when the tenure location, house designs, boundaries, landscaping and positions of roads and footpaths, play areas and other facilities or amenities may change as the development proceeds and as properties are marketed. The layout (including tenure locations) is subject to amendments due to changing planning permission for the development, and depictions of the layout should be used as guidance only. No site map including tenure locations (whether computer generated or otherwise) forms part of any offer, contract, warranty, or representation and are for illustrative and guidance purposes only, quality of this technology may vary. In relation to computer generated images, [maximum/minimum] dimensions have been used to generate this image and as a result dimensions may vary (and should not be relied on by you).



LONDON CITY AIRPORT

EXCEL LONDON

CITY OF LONDON

OLYMPIC PARK

BARKING

GREENWICH

ROYAL ALBERT DOCK

CANARY WHARF

STRATFORD

CANARY WHARF  
CITY OF LONDON

A13

M25

DARTFORD

BARKING RIVERSIDE OVERGROUND STATION

RIVERSIDE CAMPUS  
THREE SCHOOL CAMPUS

THE WILDS  
ECOLOGY CENTRE

Co-op  
EXPRESS SUPERMARKET

WATERFRONT  
RECREATION DESTINATION

THAMES CLIPPERS  
RIVERBOAT SERVICE  
Uber Boat  
by thames clippers

Computer generated image, indicative only.

# Reach central London in 22 minutes\*

The brand-new Barking Riverside Overground station is now open, connecting Barking to Gospel Oak London Overground route.

Offering regular trains, you'll be only 22 minutes from the centre of the capital. Fully step-free and accessible, the new station also has a secure bicycle store – making sustainable travel the right choice.

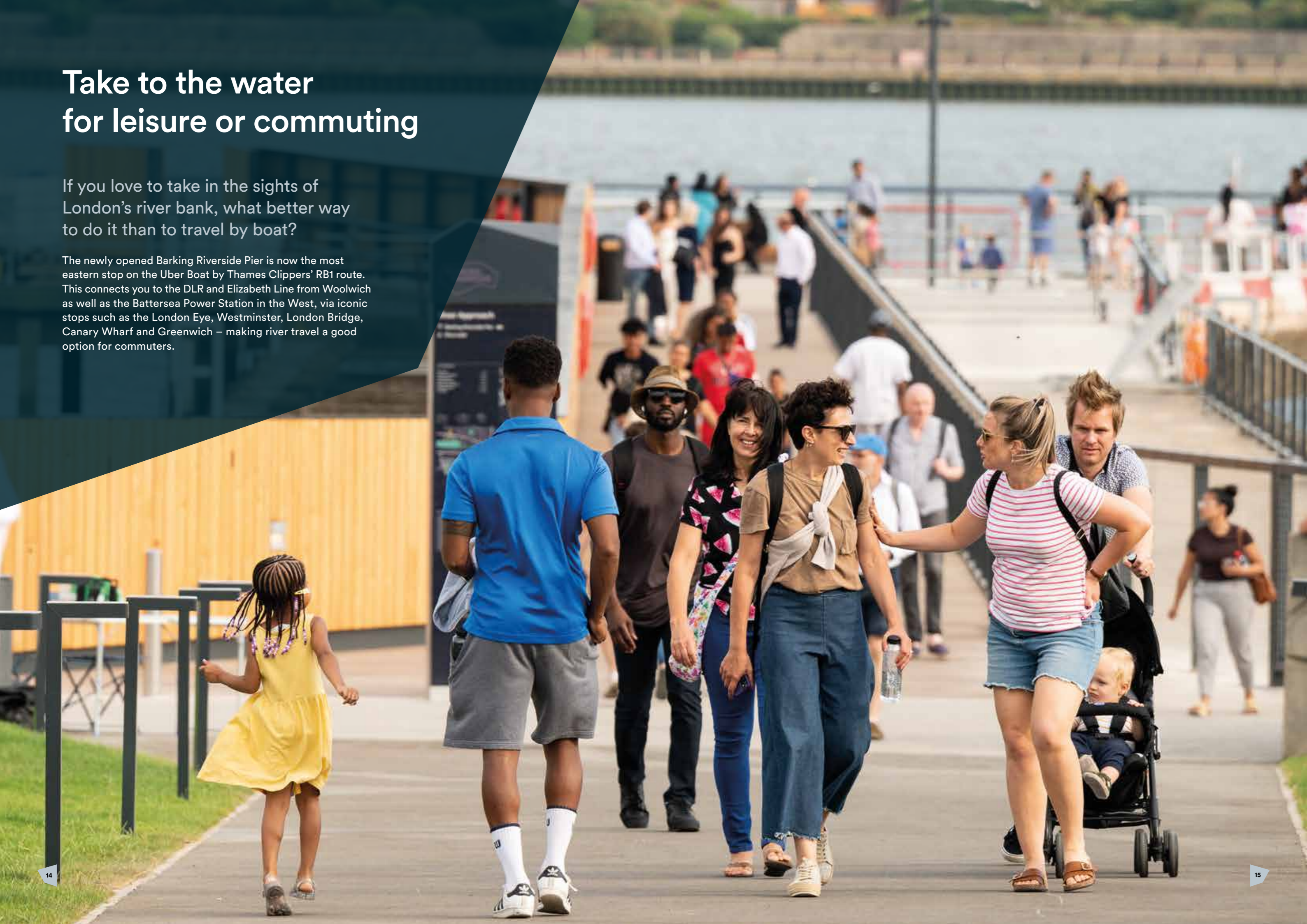
← Way out

**BARKING RIVERSIDE**

# Take to the water for leisure or commuting

If you love to take in the sights of London's river bank, what better way to do it than to travel by boat?

The newly opened Barking Riverside Pier is now the most eastern stop on the Uber Boat by Thames Clippers' RB1 route. This connects you to the DLR and Elizabeth Line from Woolwich as well as the Battersea Power Station in the West, via iconic stops such as the London Eye, Westminster, London Bridge, Canary Wharf and Greenwich – making river travel a good option for commuters.





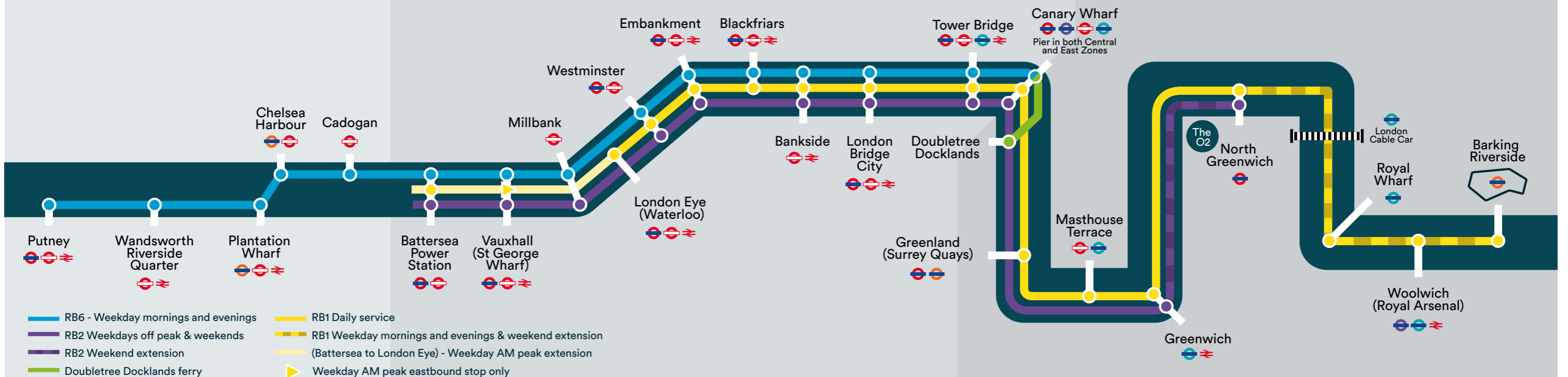


## Uber Boat by Thames Clipper from Barking Riverside Pier

North Greenwich (The O2)	20 mins
Greenwich	28 mins
Canary Wharf	40 mins
London Bridge	55 mins

## Travel across London by river

Uber Boat  
by thames clippers





### By train from Barking Riverside Overground station

Barking	7 mins
Stratford	14 mins
Canary Wharf	16 mins
Liverpool Street	25 mins



### By train to the airport from Barking Riverside Overground station

London City	48 mins
Heathrow	1hr 43 mins
Gatwick	1hr 32 mins



### By foot from Barking Riverside

Riverside School	4 mins
Barking Riverside Overground Station	10 mins
Barking Riverside Pier	13 mins



### By cycle from Barking Riverside

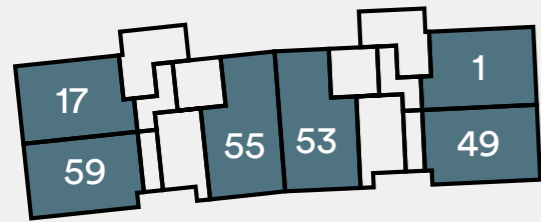
Castle Green	10 mins
Parsloes Park	15 mins
Beam Parklands Country Park	18 mins
Stratford	41 mins

Train times taken from [nationalrail.co.uk](http://nationalrail.co.uk).  
Distances taken from [google.co.uk/maps](http://google.co.uk/maps).  
Walking distances have been taken from current homes for rent.

# Apartment locator Lawley Mansions



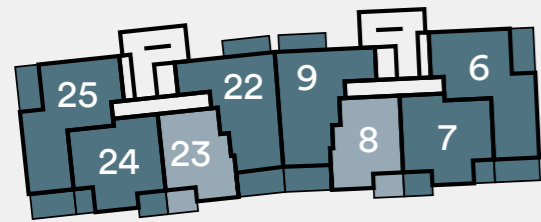
Ground Floor



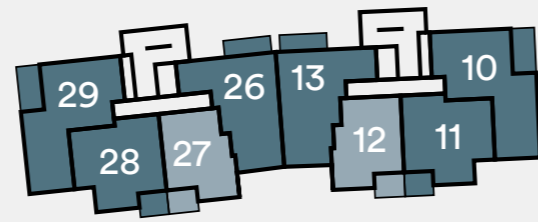
First Floor



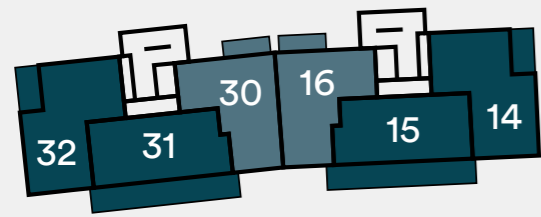
Second Floor



Third Floor



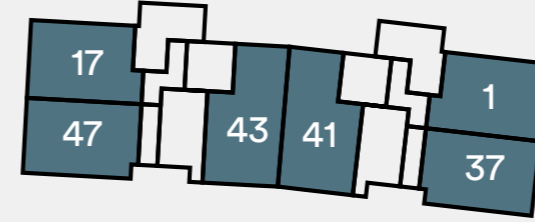
Fourth Floor



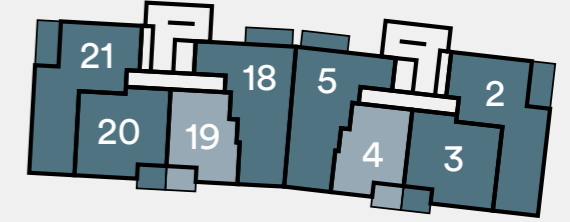
# Apartment locator Carter Mansions



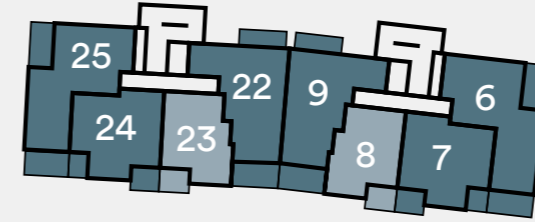
Ground Floor



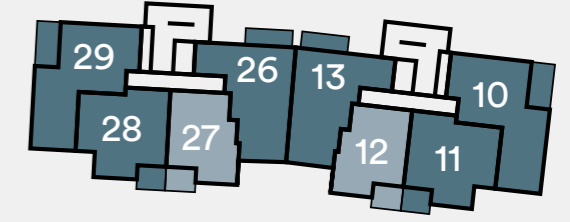
First Floor



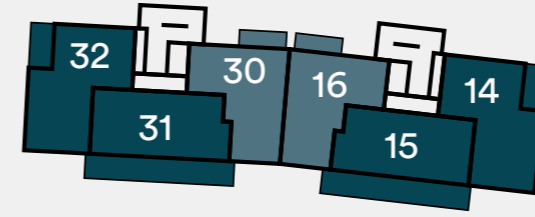
Second Floor



Third Floor



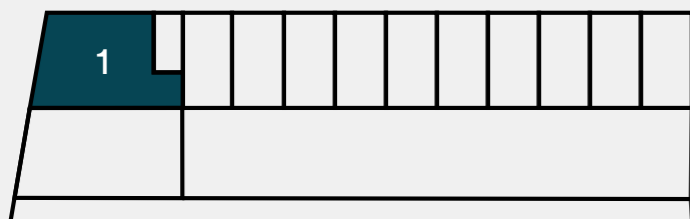
Fourth Floor



# Apartment locator Burdock Terrace



First Floor



### Key

- 1 bedroom homes
- 2 bedroom homes
- 3 bedroom homes

### Key

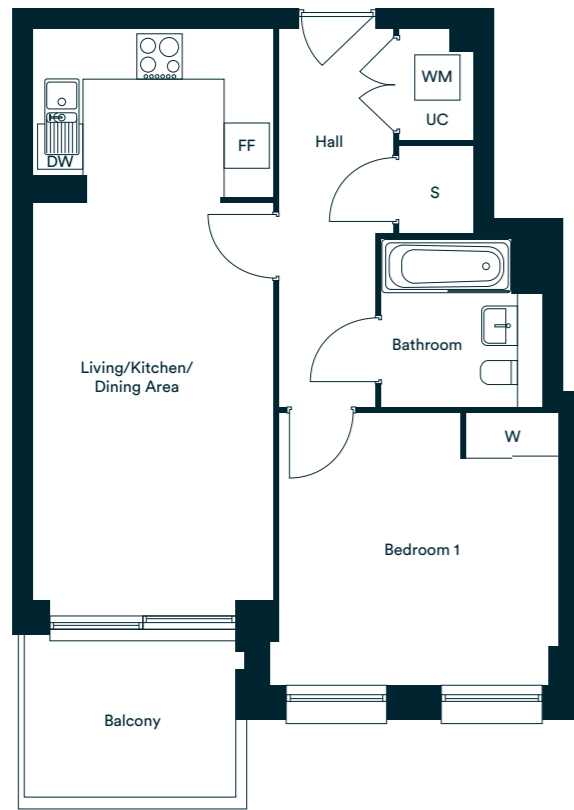
- 1 bedroom homes
- 2 bedroom homes
- 3 bedroom homes

The floorplans provided are intended to only give a general indication of the proposed floor layout, are not drawn to scale and are not intended to form part of any offer, contract, warranty or representation. Measurements are given to the widest point, are approximate and are given as a guide only. They must not be relied upon as a statement or representation of fact. Do not use these measurements for carpet sizes, appliance spaces or items of furniture. Kitchen, bathroom and utility layouts may differ to build, and specific flat sizes and layouts may vary within the same unit type. For further clarification regarding specific individual flats, please ask our Lettings Associate.

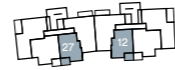


# One bedroom apartment Type A

Apartments 4\*, 8\*, 12, 19, 23 & 27 Carter Mansions  
Apartments 4\*, 8\*, 12, 19, 23 & 27 Lawley Mansions



Lawley Mansions



Third Floor  
Apartments 12\* & 27

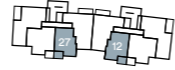


Second Floor  
Apartments 8\* & 23



First Floor  
Apartments 4\* & 19

Carter Mansions



Third Floor  
Apartments 12\* & 27



Second Floor  
Apartments 8\* & 23



First Floor  
Apartments 4\* & 19

Floor	Plot No.	Postal No.
1	9	19 Lawley Mansions
1	12	4 Lawley Mansions
2	17	23 Lawley Mansions
2	20	8 Lawley Mansions
3	25	27 Lawley Mansions
3	28	12 Lawley Mansions
1	102	19 Carter Mansions
1	105	4 Carter Mansions
2	110	23 Carter Mansions
2	113	8 Carter Mansions
3	118	27 Carter Mansions
3	121	12 Carter Mansions

## Accommodation

Living/Kitchen/Dining Area	7.55m x 3.16m	24'9" x 10'4"
Bedroom	3.68m x 3.60m	12'0" x 11'9"
<b>Total internal area</b>	<b>42.99 sq. m.</b>	<b>462.72 sq. ft.</b>
Balcony	2.76m x 2.12m	9'0" x 6'11"

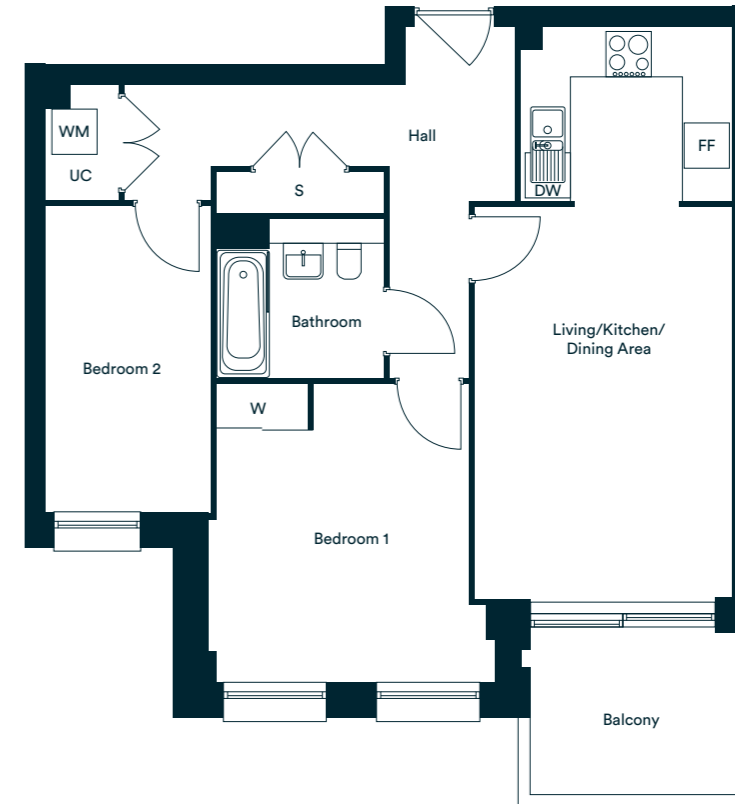
W – Wardrobe UC – Utility Cupboard FF – Fridge/Freezer WM – Washing Machine DW – Dishwasher S – Storage

\*Denotes apartments that are opposite handed/mirror image to the plans drawn. The floor plans provided are intended to only give a general indication of the proposed floor layout and are not drawn to scale. Measurements are given to the widest point, are approximate and are given as a guide only. All measures and areas may vary within a tolerance of 5%. Do not use these measurements for carpet sizes, appliance spaces or items of furniture. Kitchen, bathroom and utility layouts may differ to build. For further clarification regarding the treatment of individual plots, please ask our Lettings Associate. Unless specifically incorporated in writing into the lettings contract the specification is not intended to form part of any contract or warranty.



# Two bedroom apartment Type B

Apartments 11\* & 28 Carter Mansions  
Apartments 11\* & 28 Lawley Mansions



Lawley Mansions



Third Floor  
Apartments 11\* & 28

Carter Mansions



Third Floor  
Apartments 11\* & 28

## Accommodation

Living/Kitchen/Dining Area	7.54m x 3.39m	24'8" x 11'1"
Bedroom 1	3.95m x 3.33m	12'11" x 10'11"
Bedroom 2	4.07m x 2.15m	13'4" x 7'0"
<b>Total internal area</b>	<b>53.32 sq. m.</b>	<b>573.99 sq. ft.</b>
Balcony	2.76m x 2.12m	9'0" x 6'11"

W – Wardrobe UC – Utility Cupboard FF – Fridge/Freezer WM – Washing Machine DW – Dishwasher S – Storage

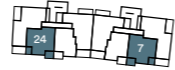
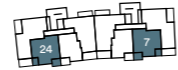
\*Denotes apartments that are opposite handed/mirror image to the plans drawn. The floor plans provided are intended to only give a general indication of the proposed floor layout and are not drawn to scale. Measurements are given to the widest point, are approximate and are given as a guide only. All measures and areas may vary within a tolerance of 5%. Do not use these measurements for carpet sizes, appliance spaces or items of furniture. Kitchen, bathroom and utility layouts may differ to build. For further clarification regarding the treatment of individual plots, please ask our Lettings Associate. Unless specifically incorporated in writing into the lettings contract the specification is not intended to form part of any contract or warranty.

Floor	Plot No.	Postal No.
3	24	28 Lawley Mansions
3	29	11 Lawley Mansions
3	117	28 Carter Mansions
3	122	11 Carter Mansions



Lawley Mansions

Carter Mansions

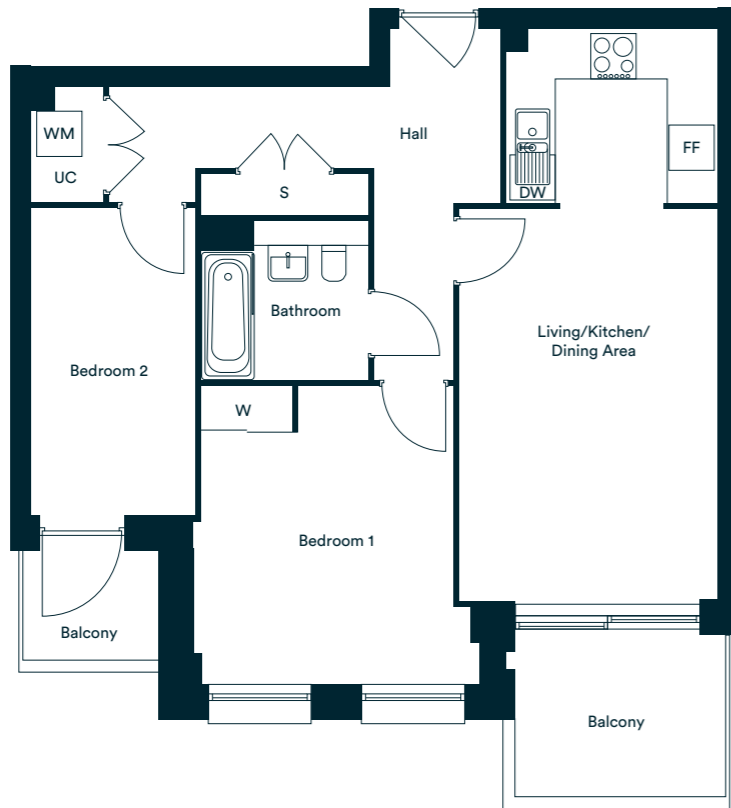


**Second Floor**  
Apartments 7\* & 24

**Second Floor**  
Apartments 7\* & 24

# Type C

Apartments 7\* & 24 Carter Mansions  
Apartments 7\* & 24 Lawley Mansions



## Accommodation

Living/Kitchen/Dining Area	7.54m x 3.39m	24'8" x 11'1"
Bedroom 1	3.95m x 3.33m	12'11" x 10'11"
Bedroom 2	4.07m x 2.15m	13'4" x 7'0"
<b>Total internal area</b>	<b>56.61 sq. m.</b>	<b>609.41 sq. ft.</b>
Balcony (Bed 2)	1.79m x 1.50m	5'10" x 4'11"
Balcony (Living/Dining)	2.76m x 2.12m	9'0" x 6'11"

Floor	Plot No.	Postal No.
2	16	24 Lawley Mansions
2	21	7 Lawley Mansions
2	109	24 Carter Mansions
2	114	7 Carter Mansions

W – Wardrobe UC – Utility Cupboard FF – Fridge/Freezer WM – Washing Machine DW – Dishwasher S – Storage

\*Denotes apartments that are opposite handed/mirror image to the plans drawn. The floor plans provided are intended to only give a general indication of the proposed floor layout and are not drawn to scale. Measurements are given to the widest point, are approximate and are given as a guide only. All measures and areas may vary within a tolerance of 5%. Do not use these measurements for carpet sizes, appliance spaces or items of furniture. Kitchen, bathroom and utility layouts may differ to build. For further clarification regarding the treatment of individual plots, please ask our Lettings Associate. Unless specifically incorporated in writing into the lettings contract the specification is not intended to form part of any contract or warranty.



Lawley Mansions

Carter Mansions

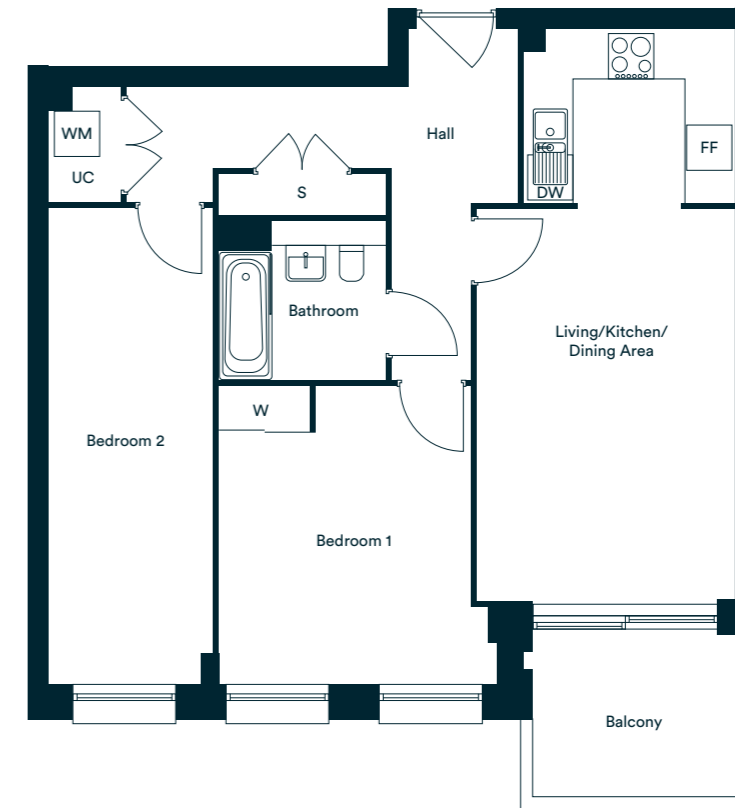


**First Floor**  
Apartments 3\* & 20

**First Floor**  
Apartments 3\* & 20

# Type D

Apartments 3\* & 20 Carter Mansions  
Apartments 3\* & 20 Lawley Mansions



## Accommodation

Living/Kitchen/Dining Area	7.54m x 3.39m	24'8" x 11'1"
Bedroom 1	3.95m x 3.68m	12'11" x 12'0"
Bedroom 2	6.31m x 2.15m	20'8" x 7'0"
<b>Total internal area</b>	<b>59.49 sq. m.</b>	<b>640.41 sq. ft.</b>
Balcony	2.76m x 2.12m	9'0" x 6'11"

Floor	Plot No.	Postal No.
1	8	20 Lawley Mansions
1	13	3 Lawley Mansions
1	101	20 Carter Mansions
1	106	3 Carter Mansions

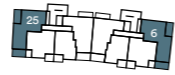
W – Wardrobe UC – Utility Cupboard FF – Fridge/Freezer WM – Washing Machine DW – Dishwasher S – Storage

\*Denotes apartments that are opposite handed/mirror image to the plans drawn. The floor plans provided are intended to only give a general indication of the proposed floor layout and are not drawn to scale. Measurements are given to the widest point, are approximate and are given as a guide only. All measures and areas may vary within a tolerance of 5%. Do not use these measurements for carpet sizes, appliance spaces or items of furniture. Kitchen, bathroom and utility layouts may differ to build. For further clarification regarding the treatment of individual plots, please ask our Lettings Associate. Unless specifically incorporated in writing into the lettings contract the specification is not intended to form part of any contract or warranty.



Lawley Mansions

Carter Mansions

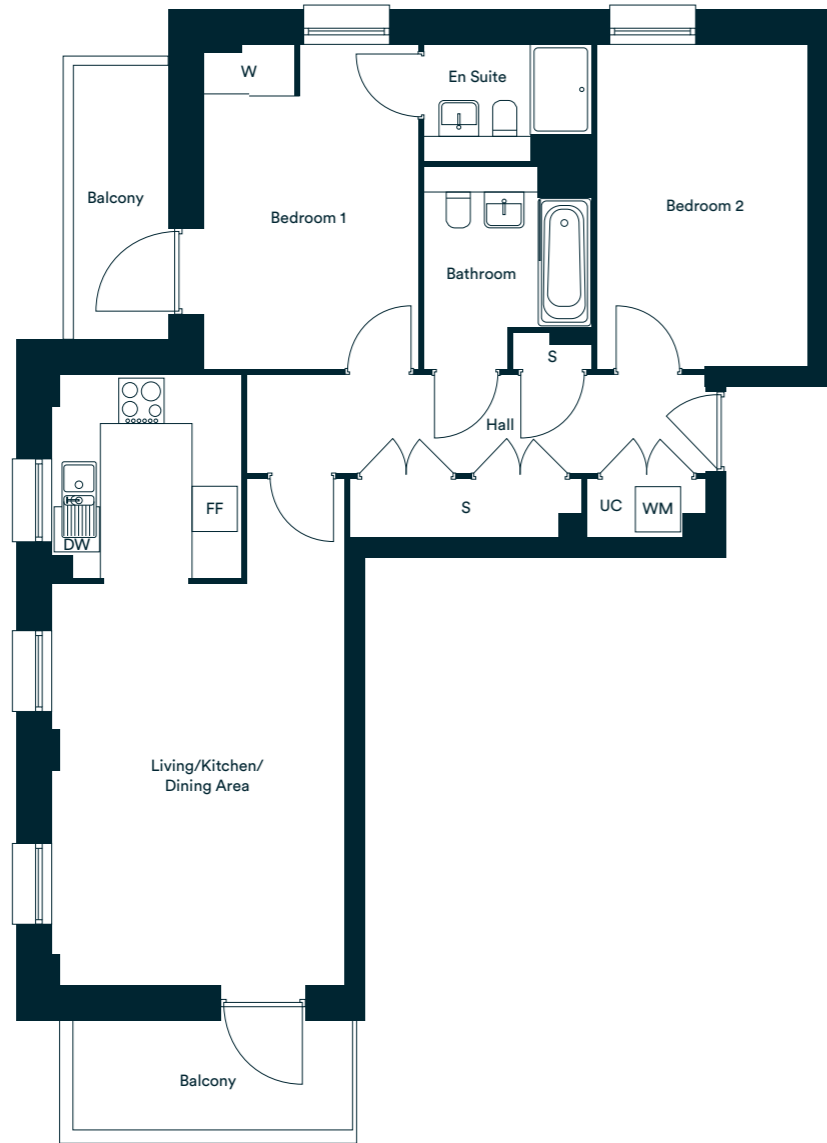


Second Floor  
Apartments 6\* & 25

Second Floor  
Apartments 6\* & 25

# Type E

Apartments 6\* & 25 Carter Mansions  
Apartments 6\* & 25 Lawley Mansions



## Accommodation

Living/Kitchen/Dining Area	8.08m x 3.88m	26'6" x 12'8"
Bedroom 1	4.30m x 2.84m	14'1" x 9'3"
Bedroom 2	4.30m x 2.75m	14'1" x 9'0"
<b>Total internal area</b>	<b>60.94 sq. m.</b>	<b>655.94 sq. ft.</b>
Balcony (Bed 1)	3.63m x 1.26m	11'10" x 4'1"
Balcony (Living/Dining)	3.70m x 1.50m	12'1" x 4'11"

Floor	Plot No.	Postal No.
2	15	25 Lawley Mansions
2	22	6 Lawley Mansions
2	108	25 Carter Mansions
2	115	6 Carter Mansions

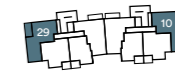
W – Wardrobe UC – Utility Cupboard FF – Fridge/Freezer WM – Washing Machine DW – Dishwasher S – Storage

\*Denotes apartments that are opposite handed/mirror image to the plans drawn. The floor plans provided are intended to only give a general indication of the proposed floor layout and are not drawn to scale. Measurements are given to the widest point, are approximate and are given as a guide only. All measures and areas may vary within a tolerance of 5%. Do not use these measurements for carpet sizes, appliance spaces or items of furniture. Kitchen, bathroom and utility layouts may differ to build. For further clarification regarding the treatment of individual plots, please ask our Lettings Associate. Unless specifically incorporated in writing into the lettings contract the specification is not intended to form part of any contract or warranty.



Lawley Mansions

Carter Mansions

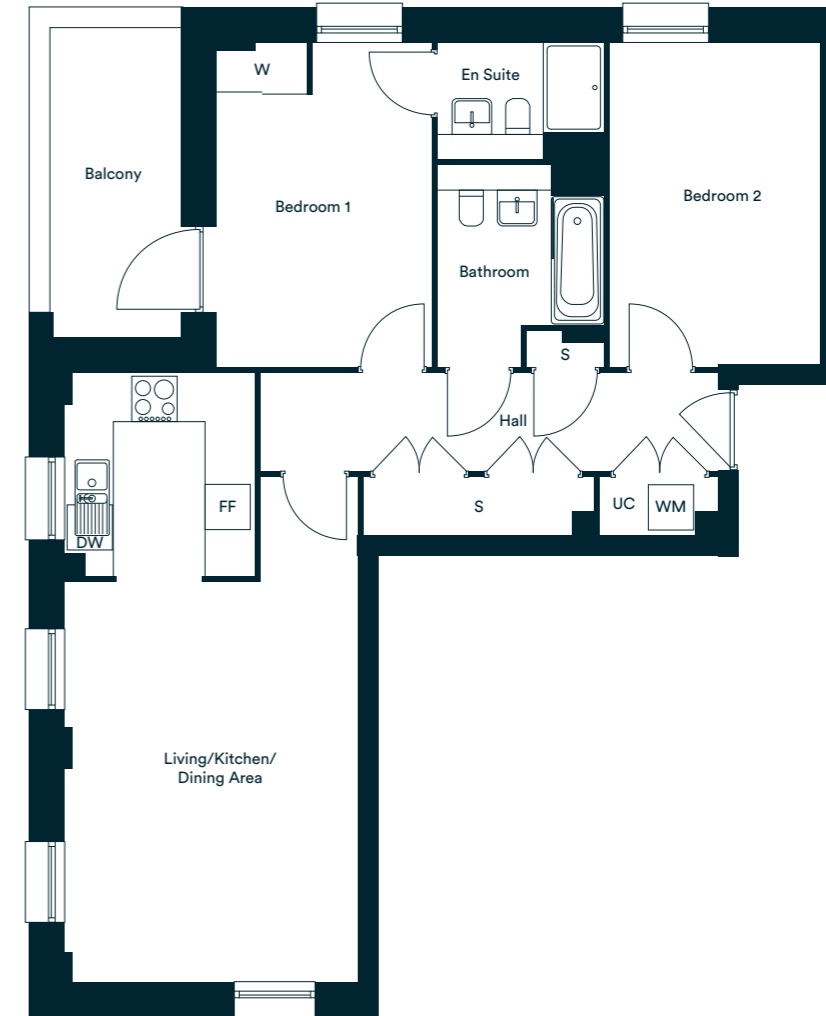


Third Floor  
Apartments 10\* & 29

Third Floor  
Apartments 10\* & 29

# Type F

Apartments 10\* & 29 Carter Mansions  
Apartments 10\* & 29 Lawley Mansions



## Accommodation

Living/Kitchen/Dining Area	8.08m x 3.88m	26'6" x 12'8"
Bedroom 1	4.30m x 2.84m	15'11" x 9'0"
Bedroom 2	4.24m x 2.75m	13'10" x 9'0"
<b>Total internal area</b>	<b>63.33 sq. m.</b>	<b>681.75 sq. ft.</b>
Balcony	4.27m x 1.90m	13'11" x 6'2"

Floor	Plot No.	Postal No.
3	23	29 Lawley Mansions
3	30	10 Lawley Mansions
3	116	29 Carter Mansions
3	123	10 Carter Mansions

W – Wardrobe UC – Utility Cupboard FF – Fridge/Freezer WM – Washing Machine DW – Dishwasher S – Storage

\*Denotes apartments that are opposite handed/mirror image to the plans drawn. The floor plans provided are intended to only give a general indication of the proposed floor layout and are not drawn to scale. Measurements are given to the widest point, are approximate and are given as a guide only. All measures and areas may vary within a tolerance of 5%. Do not use these measurements for carpet sizes, appliance spaces or items of furniture. Kitchen, bathroom and utility layouts may differ to build. For further clarification regarding the treatment of individual plots, please ask our Lettings Associate. Unless specifically incorporated in writing into the lettings contract the specification is not intended to form part of any contract or warranty.



Lawley Mansions



**Fourth Floor**  
Apartments 16\* & 30

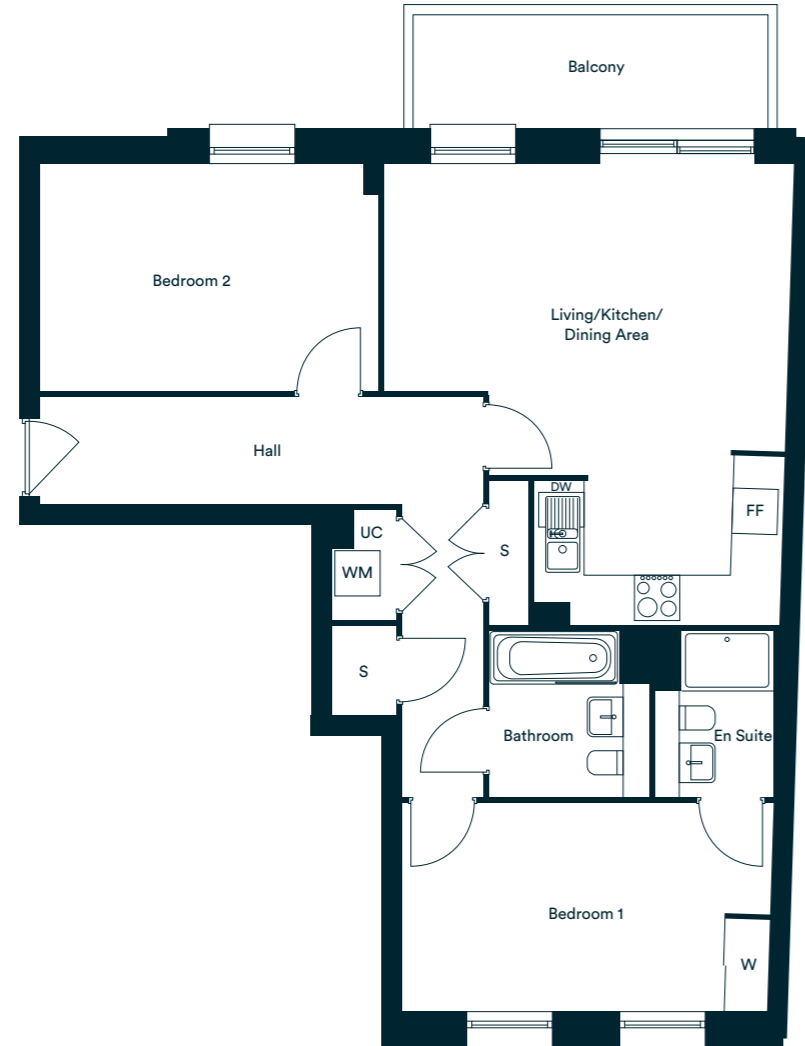
Carter Mansions



**Fourth Floor**  
Apartments 16\* & 30

# Type G

Apartments 16\* & 30 Carter Mansions  
Apartments 16\* & 30 Lawley Mansions



## Accommodation

Living/Kitchen/Dining Area	6.10m x 5.37m	20'0" x 17'7"
Bedroom 1	4.85m x 2.75m	15'10" x 9'0"
Bedroom 2	4.46m x 3.01m	14'7" x 9'10"
<b>Total internal area</b>	<b>66.54 sq. m.</b>	<b>716.21 sq. ft.</b>
Balcony	4.70m x 1.50m	15'5" x 4'11"

Floor	Plot No.	Postal No.
4	33	30 Lawley Mansions
4	34	16 Lawley Mansions
4	126	30 Carter Mansions
4	127	16 Carter Mansions

W – Wardrobe UC – Utility Cupboard FF – Fridge/Freezer WM – Washing Machine DW – Dishwasher S – Storage

\*Denotes apartments that are opposite handed/mirror image to the plans drawn. The floor plans provided are intended to only give a general indication of the proposed floor layout and are not drawn to scale. Measurements are given to the widest point, are approximate and are given as a guide only. All measures and areas may vary within a tolerance of 5%. Do not use these measurements for carpet sizes, appliance spaces or items of furniture. Kitchen, bathroom and utility layouts may differ to build. For further clarification regarding the treatment of individual plots, please ask our Lettings Associate. Unless specifically incorporated in writing into the lettings contract the specification is not intended to form part of any contract or warranty.



Lawley Mansions



**Third Floor**  
Apartments 13\* & 26

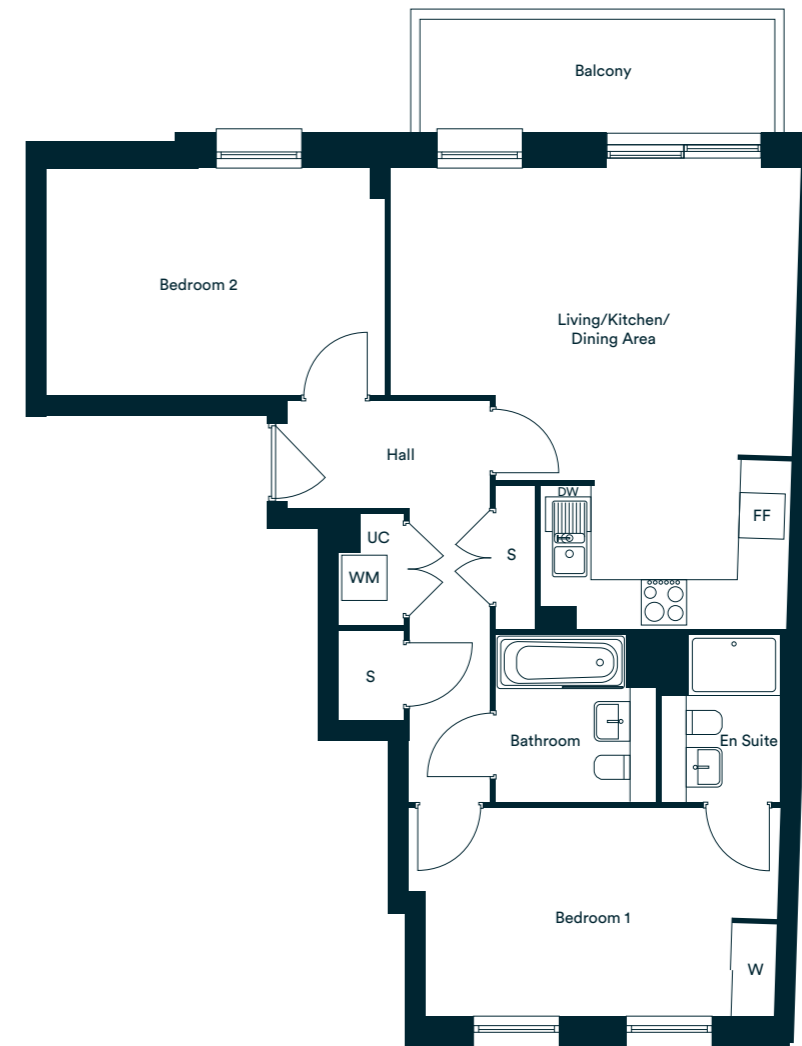
Carter Mansions



**Third Floor**  
Apartments 13\* & 26

# Type H

Apartments 13\* & 26 Carter Mansions  
Apartments 13\* & 26 Lawley Mansions



## Accommodation

Living/Kitchen/Dining Area	6.10m x 5.37m	20'0" x 17'7"
Bedroom 1	4.86m x 2.75m	15'11" x 9'0"
Bedroom 2	4.46m x 3.01m	14'7" x 9'10"
<b>Total internal area</b>	<b>66.56 sq. m.</b>	<b>716.48 sq. ft.</b>
Balcony	4.70m x 1.50m	15'5" x 4'11"

Floor	Plot No.	Postal No.
3	26	26 Lawley Mansions
3	27	13 Lawley Mansions
3	119	26 Carter Mansions
3	120	13 Carter Mansions

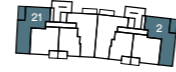
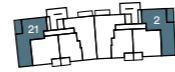
W – Wardrobe UC – Utility Cupboard FF – Fridge/Freezer WM – Washing Machine DW – Dishwasher S – Storage

\*Denotes apartments that are opposite handed/mirror image to the plans drawn. The floor plans provided are intended to only give a general indication of the proposed floor layout and are not drawn to scale. Measurements are given to the widest point, are approximate and are given as a guide only. All measures and areas may vary within a tolerance of 5%. Do not use these measurements for carpet sizes, appliance spaces or items of furniture. Kitchen, bathroom and utility layouts may differ to build. For further clarification regarding the treatment of individual plots, please ask our Lettings Associate. Unless specifically incorporated in writing into the lettings contract the specification is not intended to form part of any contract or warranty.



Lawley Mansions

Carter Mansions

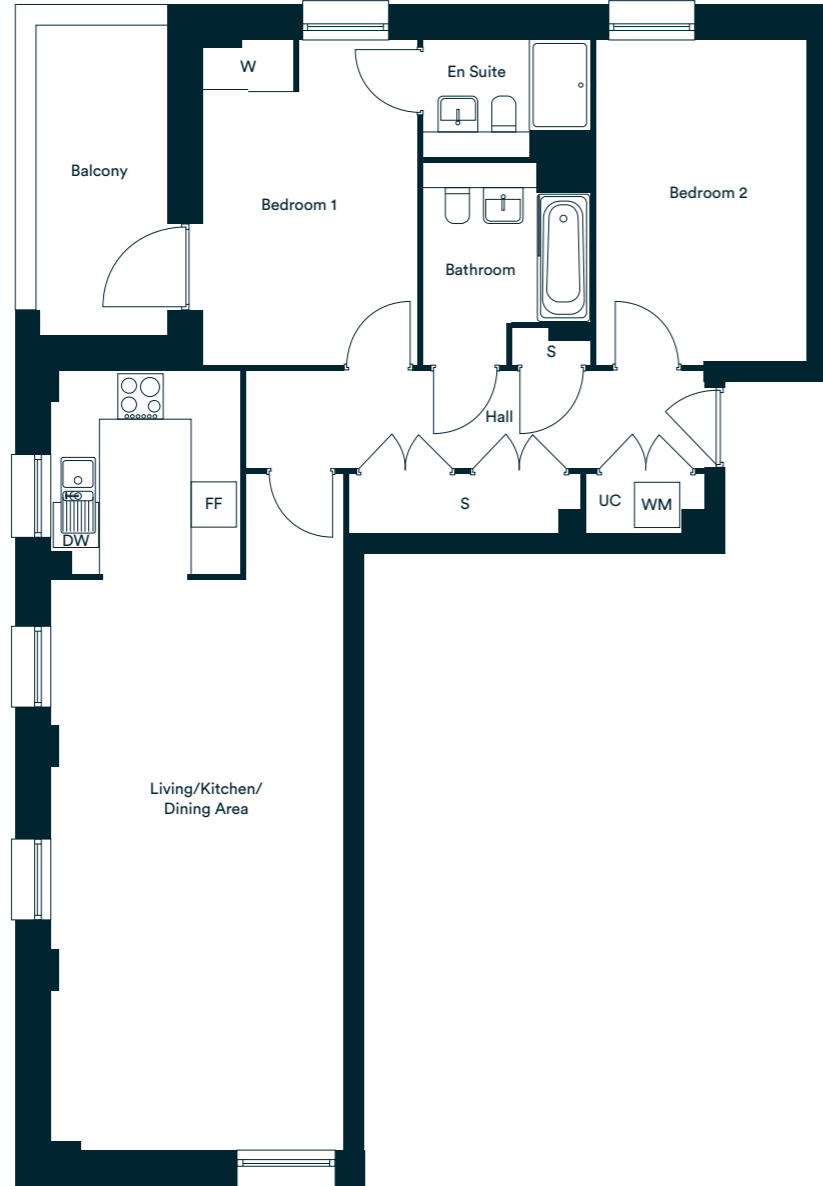


**First Floor**  
Apartments 2\* & 21

**First Floor**  
Apartments 2\* & 21

# Type I

Apartments 2\* & 21 Carter Mansions  
Apartments 2\* & 21 Lawley Mansions



## Accommodation

Living/Kitchen/Dining Area	10.21m x 3.88m	33'6" x 12'8"
Bedroom 1	4.30m x 2.84m	14'1" x 9'3"
Bedroom 2	4.30m x 2.75m	14'1" x 9'0"
<b>Total internal area</b>	<b>71.04 sq. m.</b>	<b>764.71 sq. ft.</b>
Balcony	4.13m x 1.79m	13'6" x 5'10"

Floor	Plot No.	Postal No.
1	7	21 Lawley Mansions
1	14	2 Lawley Mansions
1	100	21 Carter Mansions
1	107	2 Carter Mansions

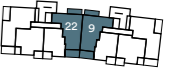
W – Wardrobe UC – Utility Cupboard FF – Fridge/Freezer WM – Washing Machine DW – Dishwasher S – Storage

\*Denotes apartments that are opposite handed/mirror image to the plans drawn. The floor plans provided are intended to only give a general indication of the proposed floor layout and are not drawn to scale. Measurements are given to the widest point, are approximate and are given as a guide only. All measures and areas may vary within a tolerance of 5%. Do not use these measurements for carpet sizes, appliance spaces or items of furniture. Kitchen, bathroom and utility layouts may differ to build. For further clarification regarding the treatment of individual plots, please ask our Lettings Associate. Unless specifically incorporated in writing into the lettings contract the specification is not intended to form part of any contract or warranty.



Lawley Mansions

Carter Mansions

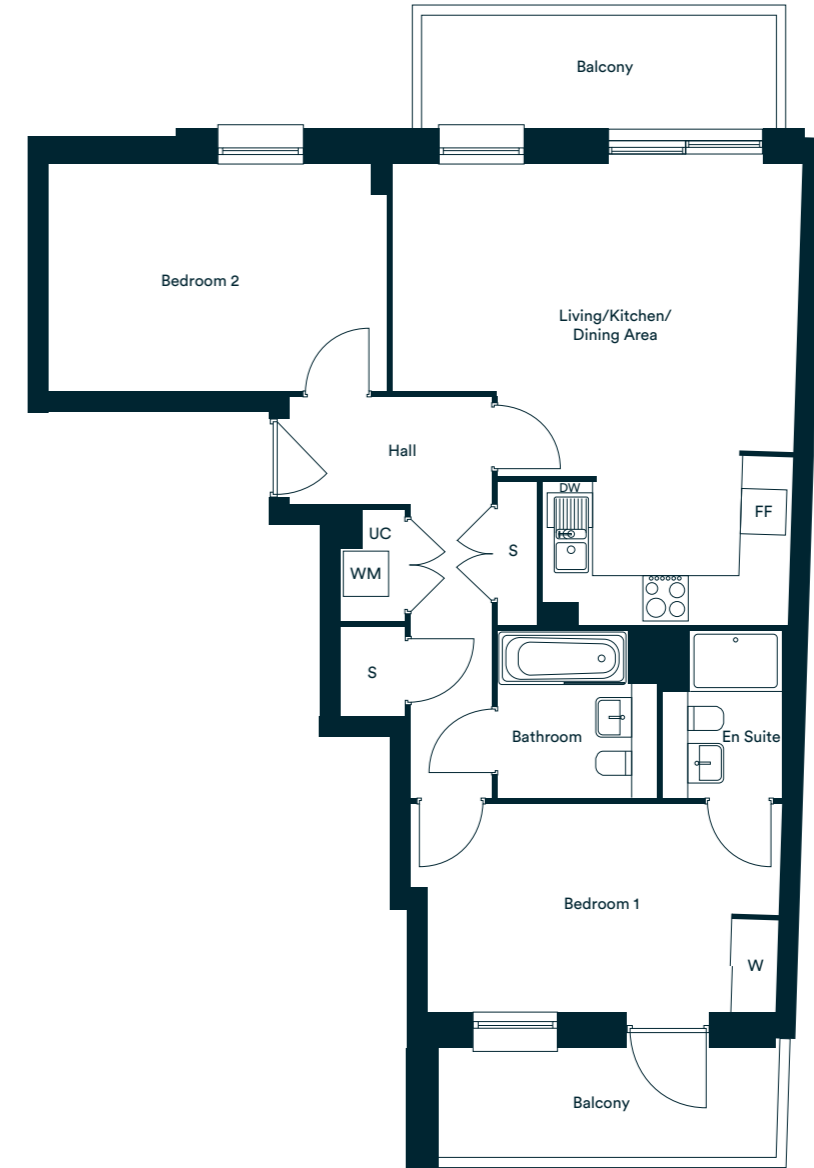


**Second Floor**  
Apartments 9\* & 22

**Second Floor**  
Apartments 9\* & 22

# Type J

Apartments 9\* & 22 Carter Mansions  
Apartments 9\* & 22 Lawley Mansions



## Accommodation

Living/Kitchen/Dining Area	6.10m x 5.37m	20'0" x 17'7"
Bedroom 1	4.86m x 2.75m	15'11" x 9'0"
Bedroom 2	4.46m x 3.01m	14'7" x 9'10"
<b>Total internal area</b>	<b>73.36 sq. m.</b>	<b>789.69 q. ft.</b>
Balcony (Bed 1)	4.52m x 1.50m	14'10" x 4'11"
Balcony (Living/Dining)	4.70m x 1.50m	15'5" x 4'11"

Floor	Plot No.	Postal No.
2	18	22 Lawley Mansions
2	19	9 Lawley Mansions
2	111	22 Carter Mansions
2	112	9 Carter Mansions

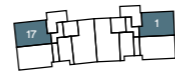
W – Wardrobe UC – Utility Cupboard FF – Fridge/Freezer WM – Washing Machine DW – Dishwasher S – Storage

\*Denotes apartments that are opposite handed/mirror image to the plans drawn. The floor plans provided are intended to only give a general indication of the proposed floor layout and are not drawn to scale. Measurements are given to the widest point, are approximate and are given as a guide only. All measures and areas may vary within a tolerance of 5%. Do not use these measurements for carpet sizes, appliance spaces or items of furniture. Kitchen, bathroom and utility layouts may differ to build. For further clarification regarding the treatment of individual plots, please ask our Lettings Associate. Unless specifically incorporated in writing into the lettings contract the specification is not intended to form part of any contract or warranty.



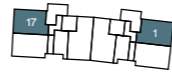


Lawley Mansions



Ground Floor  
Apartments 1\* & 17

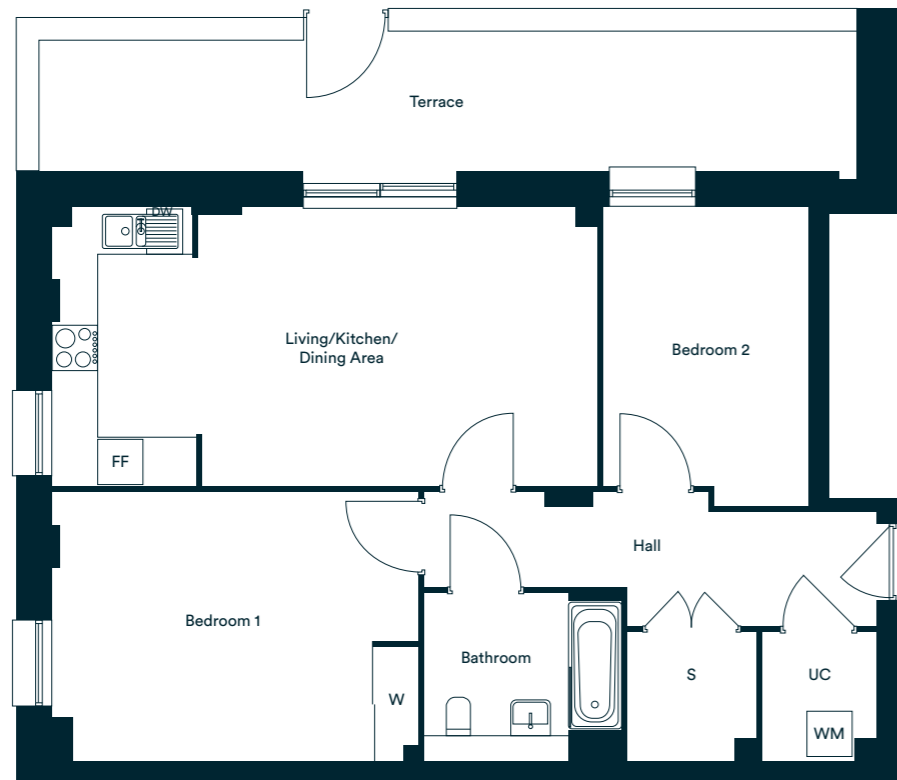
Carter Mansions



Ground Floor  
Apartments 1\* & 17

# Type K

Apartments 1\* & 17 Carter Mansions  
Apartments 1\* & 17 Lawley Mansions



## Accommodation

Living/Kitchen/Dining Area	7.23m x 3.71m	23'8" x 12'2"
Bedroom 1	4.86m x 3.53m	15'11" x 11'6"
Bedroom 2	3.98m x 2.65m	13'0" x 8'8"
<b>Total internal area</b>	<b>75.82 sq. m.</b>	<b>816.18 sq. ft.</b>
Balcony	11.02m x 1.93m	36'1" x 6'3"

Wheelchair adaptable

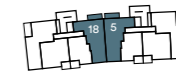
W – Wardrobe UC – Utility Cupboard FF – Fridge/Freezer WM – Washing Machine DW – Dishwasher S – Storage

Floor	Plot No.	Postal No.
0	2	17 Lawley Mansions
0	5	1 Lawley Mansions
0	95	17 Carter Mansions
0	98	1 Carter Mansions

\*Denotes apartments that are opposite handed/mirror image to the plans drawn. The floor plans provided are intended to only give a general indication of the proposed floor layout and are not drawn to scale. Measurements are given to the widest point, are approximate and are given as a guide only. All measures and areas may vary within a tolerance of 5%. Do not use these measurements for carpet sizes, appliance spaces or items of furniture. Kitchen, bathroom and utility layouts may differ to build. For further clarification regarding the treatment of individual plots, please ask our Lettings Associate. Unless specifically incorporated in writing into the lettings contract the specification is not intended to form part of any contract or warranty.

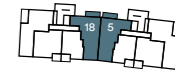


Lawley Mansions



First Floor  
Apartments 5\* & 18

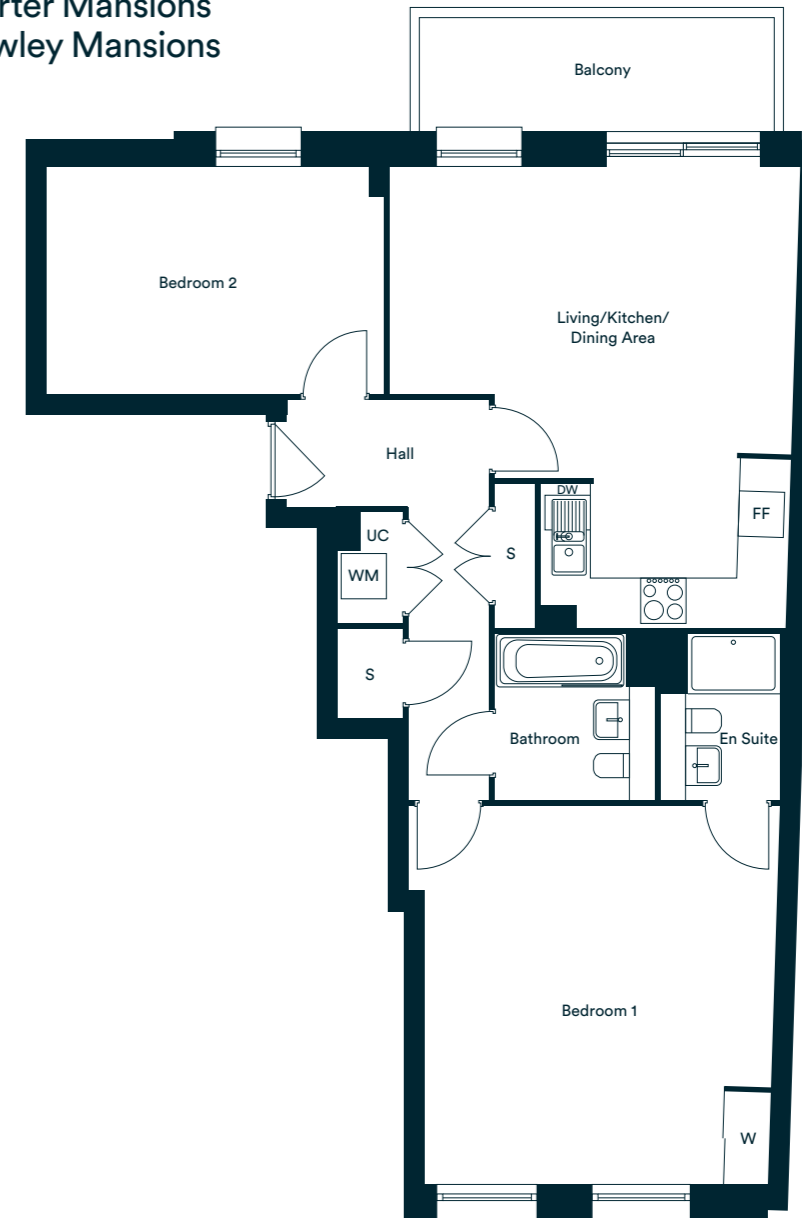
Carter Mansions



First Floor  
Apartments 5\* & 18

# Type L

Apartments 5\* & 18 Carter Mansions  
Apartments 5\* & 18 Lawley Mansions



## Accommodation

Living/Kitchen/Dining Area	6.10m x 5.37m	20'0" x 17'7"
Bedroom 1	5.00m x 4.60m	16'4" x 15'1"
Bedroom 2	4.46m x 3.01m	14'7" x 9'10"
<b>Total internal area</b>	<b>76.23 sq. m.</b>	<b>820.55 sq. ft.</b>
Balcony	4.70m x 1.50m	15'5" x 4'11"

W – Wardrobe UC – Utility Cupboard FF – Fridge/Freezer WM – Washing Machine DW – Dishwasher S – Storage

Floor	Plot No.	Postal No.
1	10	18 Lawley Mansions
1	11	5 Lawley Mansions
1	103	18 Carter Mansions
1	104	5 Carter Mansions

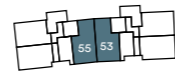
\*Denotes apartments that are opposite handed/mirror image to the plans drawn. The floor plans provided are intended to only give a general indication of the proposed floor layout and are not drawn to scale. Measurements are given to the widest point, are approximate and are given as a guide only. All measures and areas may vary within a tolerance of 5%. Do not use these measurements for carpet sizes, appliance spaces or items of furniture. Kitchen, bathroom and utility layouts may differ to build. For further clarification regarding the treatment of individual plots, please ask our Lettings Associate. Unless specifically incorporated in writing into the lettings contract the specification is not intended to form part of any contract or warranty.

# Type M

Apartments 53\* & 55  
Lawley Mansions  
Apartments 41\* & 43  
Carter Mansions



Lawley Mansions



Ground Floor  
Apartments 53\* & 55

Carter Mansions



Ground Floor  
Apartments 41\* & 43

## Accommodation

Living/Kitchen/Dining Area	6.23m x 5.10m	20'5" x 16'8"
Bedroom 1	6.41m x 3.19m	21'0" x 10'5"
Bedroom 2	4.62m x 2.87m	15'1" x 9'4"
<b>Total internal area</b>	<b>83.02 sq. m.</b>	<b>893.63 sq. ft.</b>
Balcony	4.13m x 1.79m	13'6" x 5'10"

Wheelchair adaptable

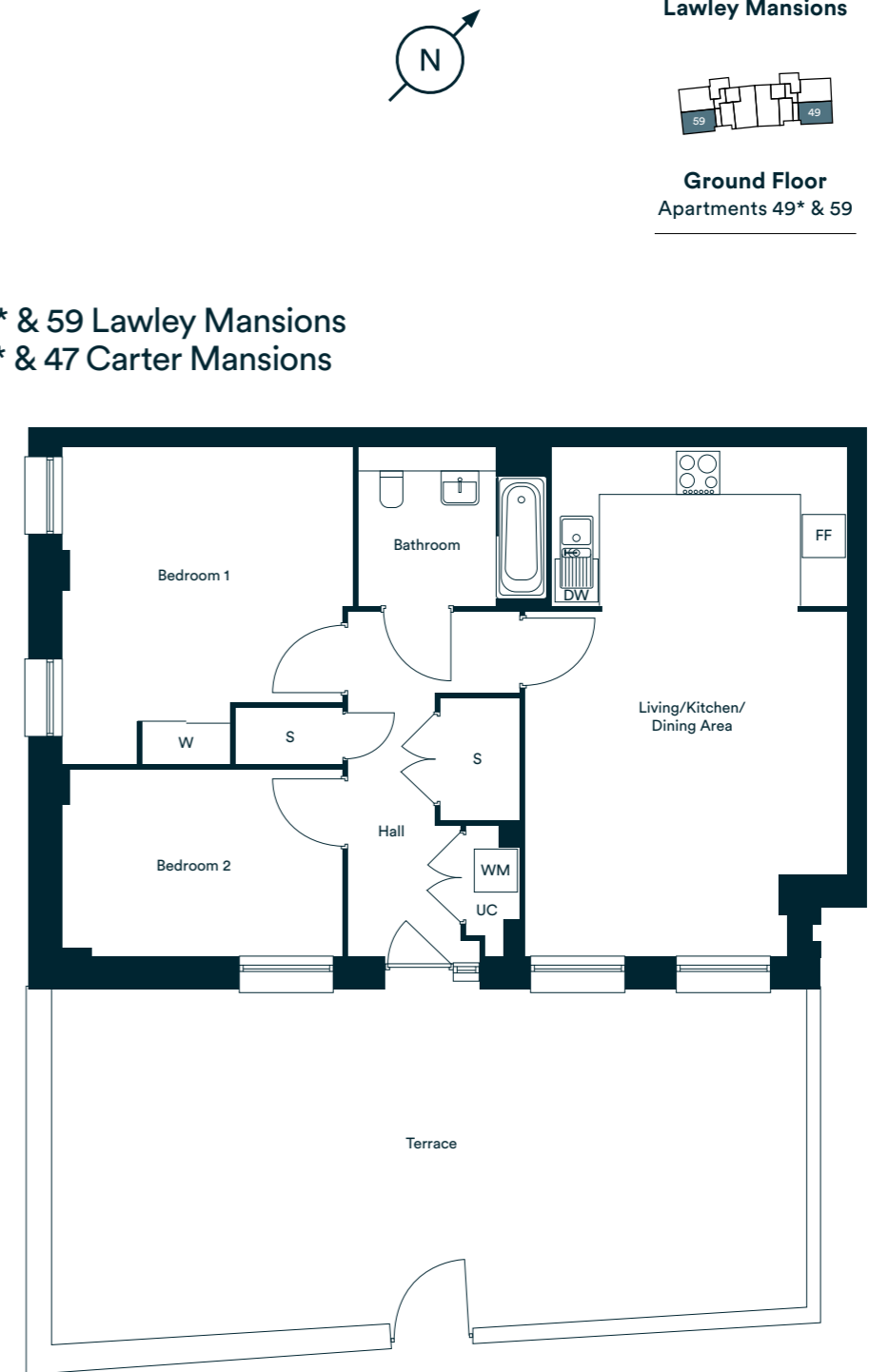
W – Wardrobe UC – Utility Cupboard FF – Fridge/Freezer WM – Washing Machine DW – Dishwasher S – Storage

Floor	Plot No.	Postal No.
0	3	55 Fielders Crescent
0	4	53 Fielders Crescent
0	96	43 Fielders Crescent
0	97	41 Fielders Crescent

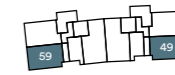
\*Denotes apartments that are opposite handed/mirror image to the plans drawn. The floor plans provided are intended to only give a general indication of the proposed floor layout and are not drawn to scale. Measurements are given to the widest point, are approximate and are given as a guide only. All measures and areas may vary within a tolerance of 5%. Do not use these measurements for carpet sizes, appliance spaces or items of furniture. Kitchen, bathroom and utility layouts may differ to build. For further clarification regarding the treatment of individual plots, please ask our Lettings Associate. Unless specifically incorporated in writing into the lettings contract the specification is not intended to form part of any contract or warranty.

# Type N

Apartments 49\* & 59 Lawley Mansions  
Apartments 37\* & 47 Carter Mansions

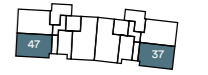


Lawley Mansions



Ground Floor  
Apartments 49\* & 59

Carter Mansions



Ground Floor  
Apartments 37\* & 47

## Accommodation

Living/Kitchen/Dining Area	7.07m x 4.47m	23'2" x 14'7"
Bedroom 1	4.40m x 4.05m	14'5" x 13'3"
Bedroom 2	3.90m x 2.59m	12'9" x 8'5"
<b>Total internal area</b>	<b>107.77 sq. m.</b>	<b>1160.99 sq. ft.</b>
Balcony	10.45m x 4.62m	34'3" x 15'2"

Wheelchair adaptable

W – Wardrobe UC – Utility Cupboard FF – Fridge/Freezer WM – Washing Machine DW – Dishwasher S – Storage

Floor	Plot No.	Postal No.
0	1	59 Fielders Crescent
0	6	49 Fielders Crescent
0	94	47 Fielders Crescent
0	99	37 Fielders Crescent

\*Denotes apartments that are opposite handed/mirror image to the plans drawn. The floor plans provided are intended to only give a general indication of the proposed floor layout and are not drawn to scale. Measurements are given to the widest point, are approximate and are given as a guide only. All measures and areas may vary within a tolerance of 5%. Do not use these measurements for carpet sizes, appliance spaces or items of furniture. Kitchen, bathroom and utility layouts may differ to build. For further clarification regarding the treatment of individual plots, please ask our Lettings Associate. Unless specifically incorporated in writing into the lettings contract the specification is not intended to form part of any contract or warranty.



# Three bedroom apartment Type O

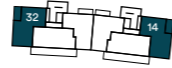
Apartments 14\* & 32 Carter Mansions  
Apartments 14\* & 32 Lawley Mansions

Lawley Mansions

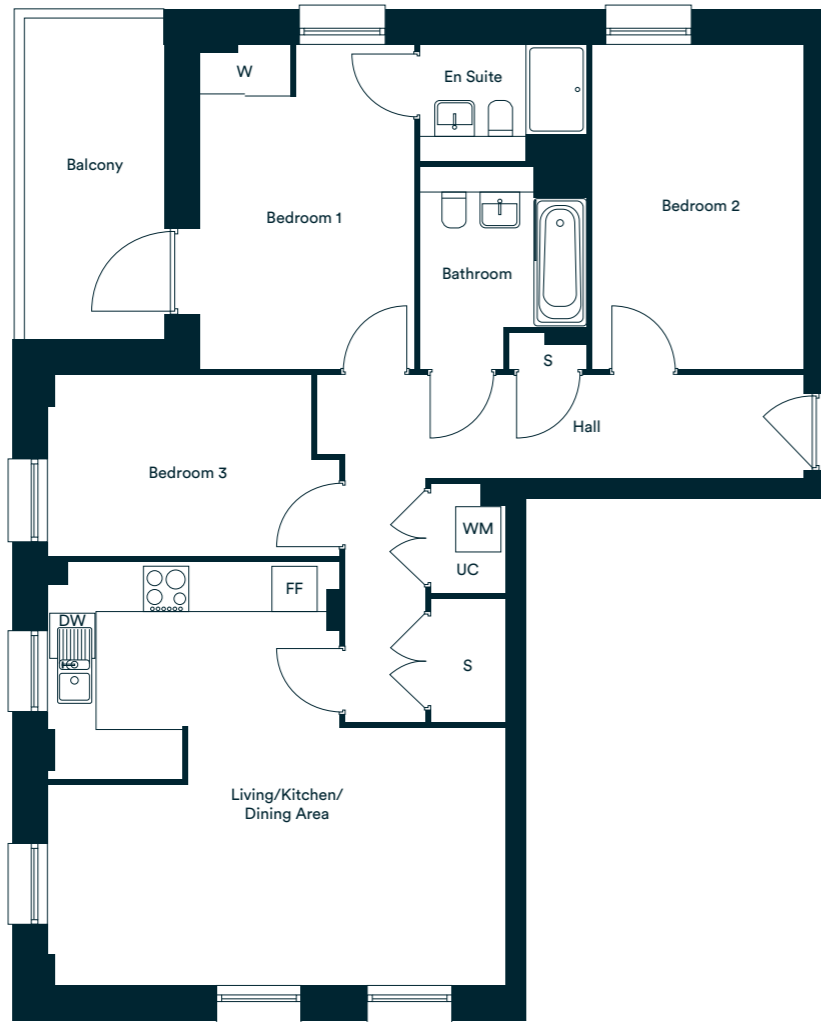


Fourth Floor  
Apartments 14\* & 32

Carter Mansions



Fourth Floor  
Apartments 14\* & 32



## Accommodation

Living/Kitchen/Dining Area	6.04m x 5.59m	19'9" x 18'3"
Bedroom 1	4.29m x 2.84m	14'0" x 9'3"
Bedroom 2	4.29m x 2.75m	14'0" x 9'0"
Bedroom 3	3.87m x 2.40m	12'8" x 7'10"
<b>Total internal area</b>	<b>75.07 sq. m.</b>	<b>808.09 sq. ft.</b>
Balcony	4.26m x 1.90m	13'11" x 6'2"

Floor	Plot No.	Postal No.
4	31	32 Lawley Mansions
4	36	14 Lawley Mansions
4	124	32 Carter Mansions
4	129	14 Carter Mansions

W – Wardrobe UC – Utility Cupboard FF – Fridge/Freezer WM – Washing Machine DW – Dishwasher S – Storage

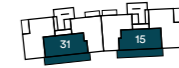
\*Denotes apartments that are opposite handed/mirror image to the plans drawn. The floor plans provided are intended to only give a general indication of the proposed floor layout and are not drawn to scale. Measurements are given to the widest point, are approximate and are given as a guide only. All measures and areas may vary within a tolerance of 5%. Do not use these measurements for carpet sizes, appliance spaces or items of furniture. Kitchen, bathroom and utility layouts may differ to build. For further clarification regarding the treatment of individual plots, please ask our Lettings Associate. Unless specifically incorporated in writing into the lettings contract the specification is not intended to form part of any contract or warranty.



# Type P

Apartments 15\* & 31 Carter Mansions  
Apartments 15\* & 31 Lawley Mansions

Lawley Mansions

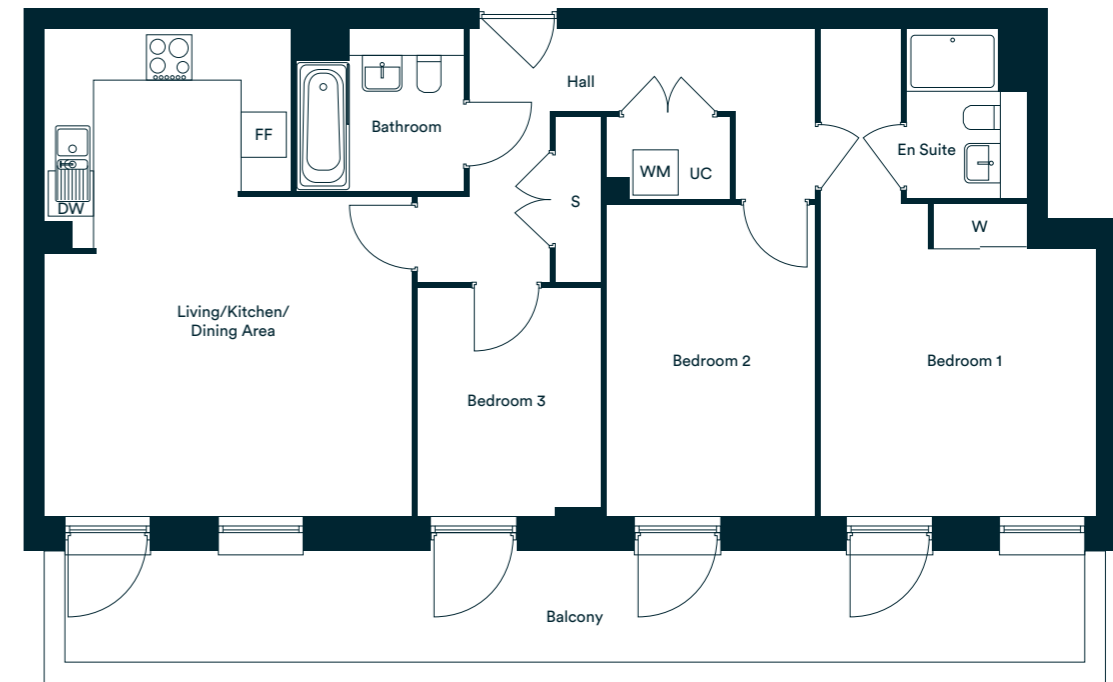


Fourth Floor  
Apartments 15\* & 31

Carter Mansions



Fourth Floor  
Apartments 15\* & 31



## Accommodation

Living/Kitchen/Dining Area	6.42m x 4.85m	21'0" x 15'11"
Bedroom 1	4.13m x 3.61m	13'6" x 11'10"
Bedroom 2	4.12m x 2.75m	13'6" x 9'0"
Bedroom 3	3.02m x 2.42m	9'10" x 7'11"
<b>Total internal area</b>	<b>85.05 sq. m.</b>	<b>915.50 sq. ft.</b>
Balcony	13.57m x 1.50m	44'6" x 4'11"

Floor	Plot No.	Postal No.
4	32	31 Lawley Mansions
4	35	15 Lawley Mansions
4	125	31 Carter Mansions
4	128	15 Carter Mansions

W – Wardrobe UC – Utility Cupboard FF – Fridge/Freezer WM – Washing Machine DW – Dishwasher S – Storage

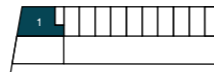
\*Denotes apartments that are opposite handed/mirror image to the plans drawn. The floor plans provided are intended to only give a general indication of the proposed floor layout and are not drawn to scale. Measurements are given to the widest point, are approximate and are given as a guide only. All measures and areas may vary within a tolerance of 5%. Do not use these measurements for carpet sizes, appliance spaces or items of furniture. Kitchen, bathroom and utility layouts may differ to build. For further clarification regarding the treatment of individual plots, please ask our Lettings Associate. Unless specifically incorporated in writing into the lettings contract the specification is not intended to form part of any contract or warranty.

# Type Q

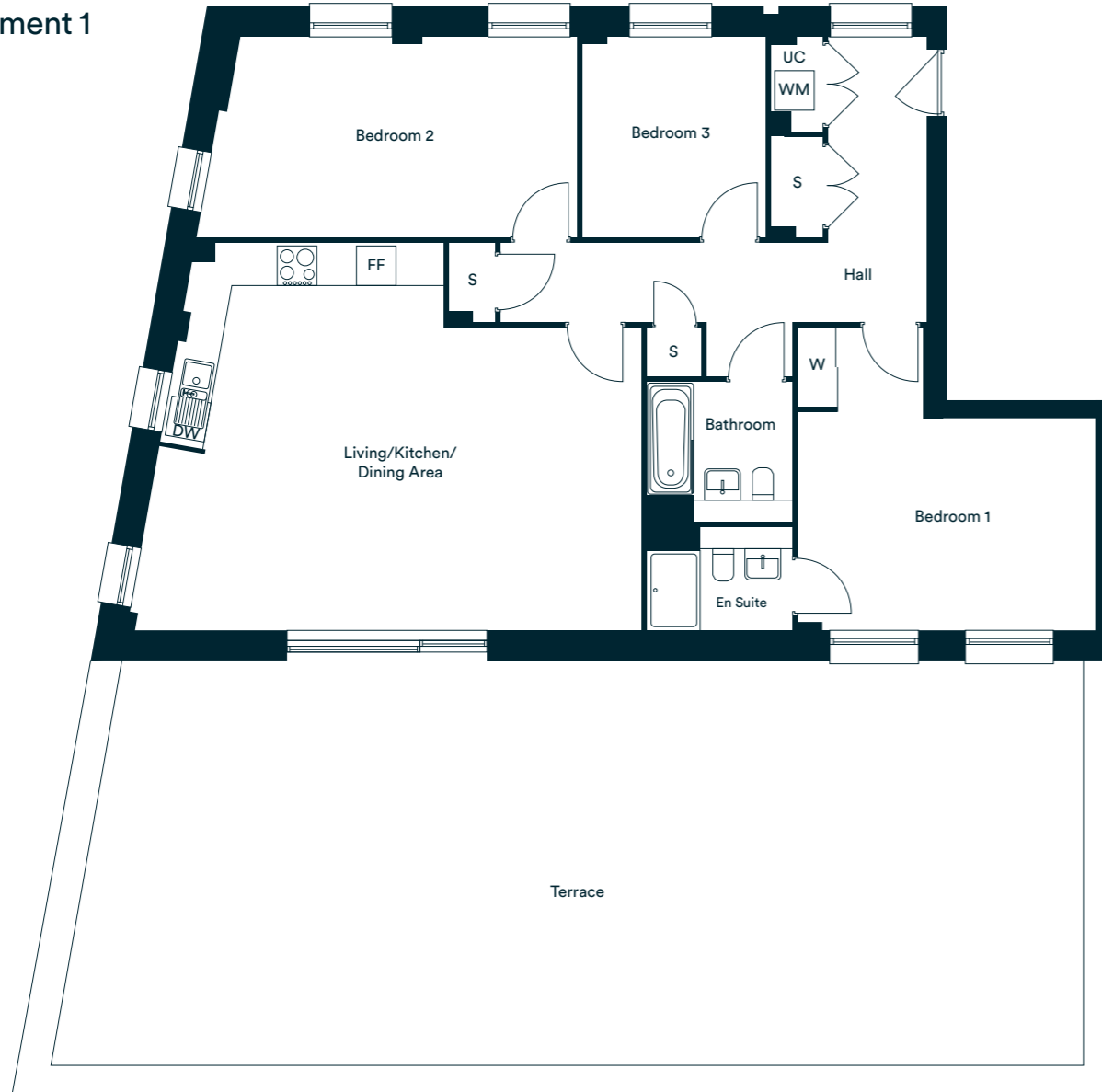
## Apartment 1



Burdock Terrace



First Floor  
Apartment 1



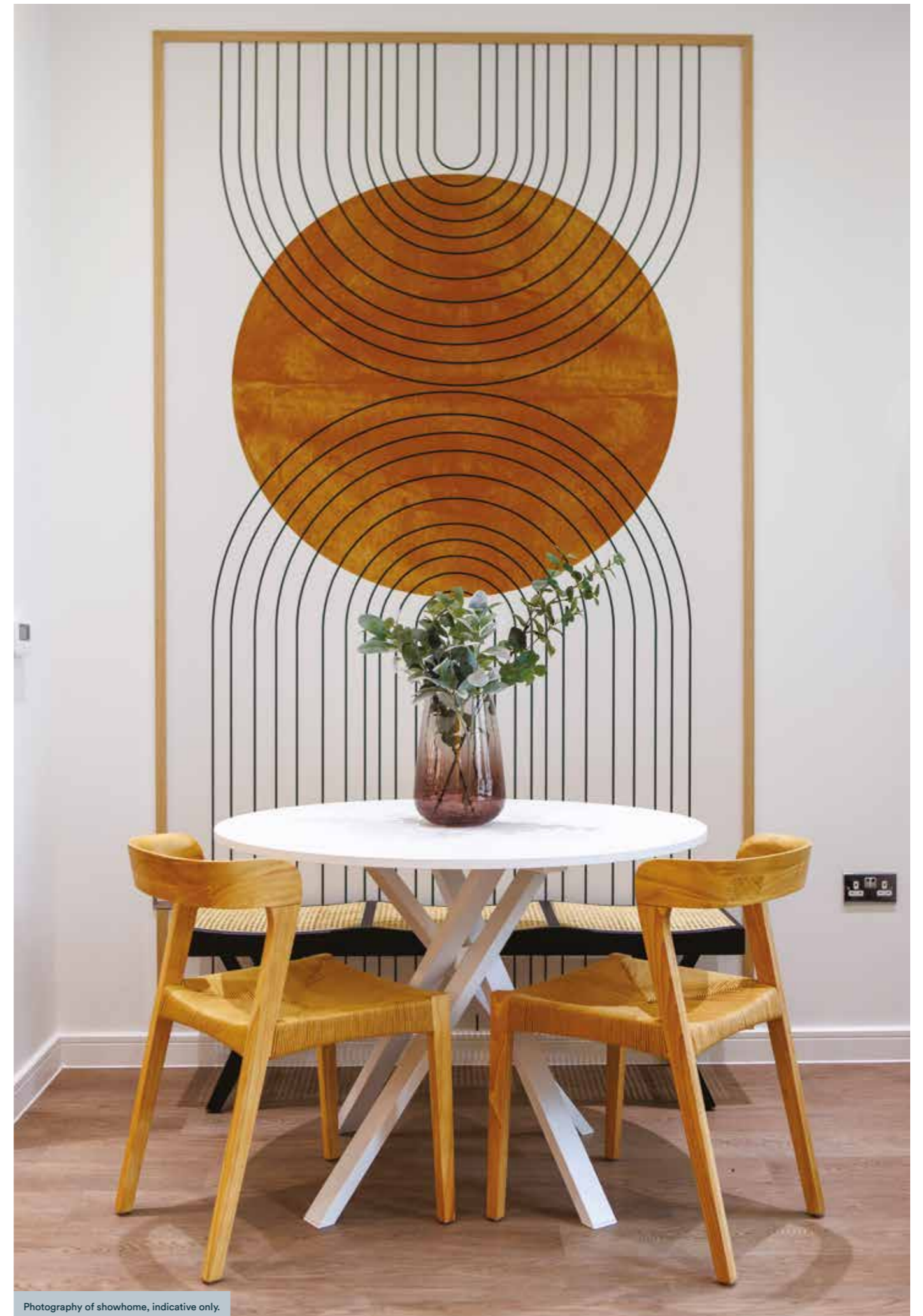
### Accommodation

Living/Kitchen/Dining Area	7.26m x 5.82m	23'9" x 19'0"
Bedroom 1	4.53m x 4.49m	14'10" x 14'8"
Bedroom 2	5.48m x 2.99m	17'11" x 9'9"
Bedroom 3	3.03m x 2.77m	9'11" x 9'1"
<b>Total internal area</b>	<b>87.36 sq. m.</b>	<b>940.37 sq. ft.</b>

Floor	Plot No.	Postal No.
1	92	1 Burdock Terrace

W – Wardrobe UC – Utility Cupboard FF – Fridge/Freezer WM – Washing Machine DW – Dishwasher S – Storage

\*Denotes apartments that are opposite handed/mirror image to the plans drawn. The floor plans provided are intended to only give a general indication of the proposed floor layout and are not drawn to scale. Measurements are given to the widest point, are approximate and are given as a guide only. All measures and areas may vary within a tolerance of 5%. Do not use these measurements for carpet sizes, appliance spaces or items of furniture. Kitchen, bathroom and utility layouts may differ to build. For further clarification regarding the treatment of individual plots, please ask our Lettings Associate. Unless specifically incorporated in writing into the lettings contract the specification is not intended to form part of any contract or warranty.



Photography of showhome, indicative only.



Photography of showhome, indicative only.

# L&Q's portfolio of homes to rent

If you choose to rent, you want the pick of rental properties so you can find the one that best fits your needs, your lifestyle and your budget.

As one of London's most experienced landlords, L&Q understands what renters want and don't believe you should compromise any element of your rental home, quality or service.

That is why we are creating the UK's widest choice of new purpose-built and newly refurbished homes to rent across London and the South East.

Based on our 60 years' experience, L&Q has streamlined the lettings process for our tenants to ensure a responsive and comprehensive letting service.

We offer our tenants the right locations, good value and great transport connections. All our brand new or newly refurbished apartments are well appointed, and everyone is backed by a dedicated property manager, which means support is only ever a phone call away.

As a long-term investor in housing, L&Q wants to simplify the process to give you more time and energy to focus on what's important to you. We offer you the peace of mind that the standard you expect is what you receive when you rent with us.

## What you can expect when you choose to rent from L&Q



Excellent transport connections for easy commuting



The right locations in established neighbourhoods



No hidden costs, and good value for money



New purpose-built or newly refurbished accommodation



Well-appointed homes



Dedicated property manager on the end of a phone



Comprehensive letting service from an experienced, responsible and reliable landlord

# Move into your LLR home in 10 easy steps:



\*Note LLR is a stepping stone for those who are currently unable to purchase a home via Shared Ownership or through the open market and wish to transition from renting to homeownership.

^Please note L&Q are unable to confirm tenancy start dates prior to this stage.



## Barking Riverside



[lqhomes.com/LLR](https://lqhomes.com/LLR)



0208 189 7546



[llrbarkingriverside@lqgroup.org.uk](mailto:llrbarkingriverside@lqgroup.org.uk)

### Disclaimer

All information in this document is correct at the time of going to print. Computer generated images are for illustrative purposes only and dimensions are not intended to form part of any contract or warranty. Furniture and landscaping are shown for illustrative purposes only. Individual features such as windows, brick, materials and colours as may heating and electrical layouts. We aim to build according to the layout, but occasionally we do have to change property designs, boundaries, landscaping and the other positions of roads, footpaths, street lighting and other features as the development proceeds. All services and facilities may not be available on completion of the property. For further clarification please ask our Lettings Associates.

Registered office: L&Q, 29-35 West Ham Lane, Stratford, London E15 4PH. Homes & Communities Agency L4517. Registered Society 30441R Exempt charity.