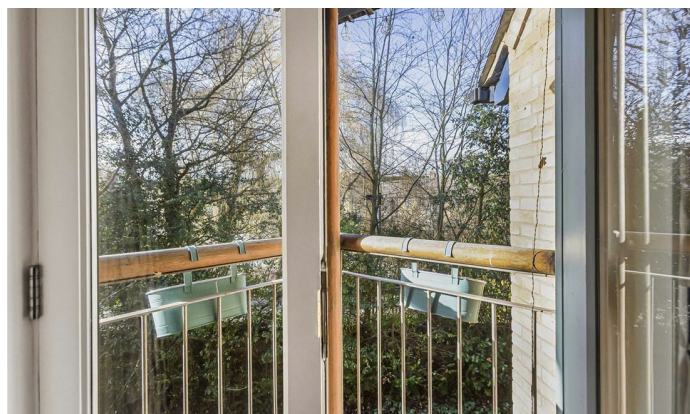




6, Coopers Court, Hertford
SG14 1UB
Asking Price £415,000



stevenoates.com



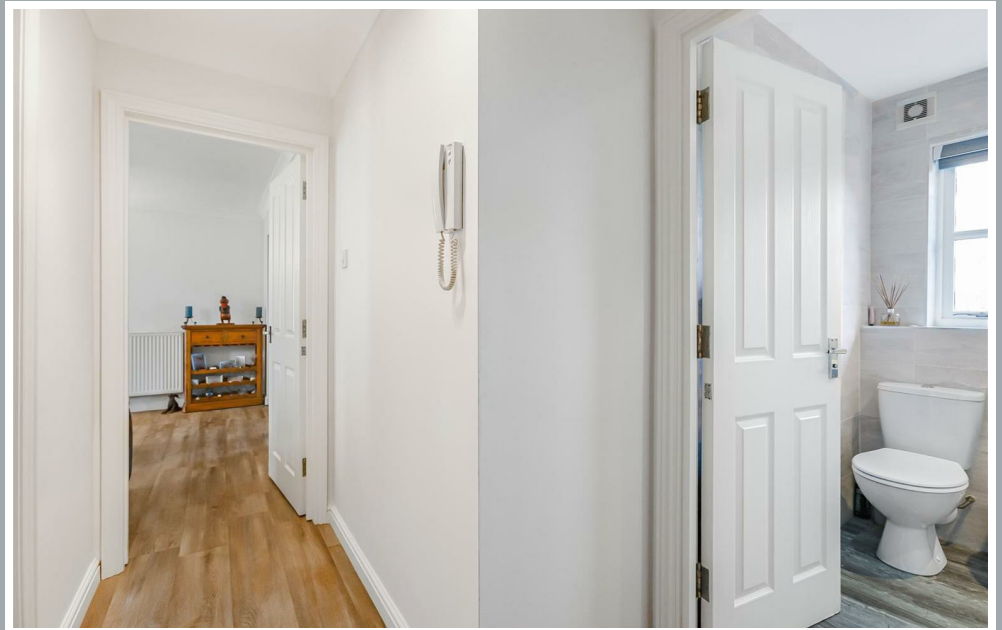
6 Coopers Court, Hertford, SG14 1UB

****Two Allocated Parking Space**** A stunning split-level apartment situated within a private gated development, quietly tucked away yet ideally positioned in the heart of the town centre. The property has been refurbished throughout to a high standard, featuring a high-end refitted kitchen and two luxury refitted bathrooms. The spacious lounge is filled with natural light and benefits from a Juliet balcony with attractive views over the River Lea, creating a bright and inviting living space. The main bedroom is located on the first floor, offering excellent privacy and is complemented by a stylish en-suite shower room. Further highlights include two allocated parking spaces and the added security and exclusivity of the gated complex. This exceptional apartment offers contemporary living in a peaceful yet highly convenient central location.

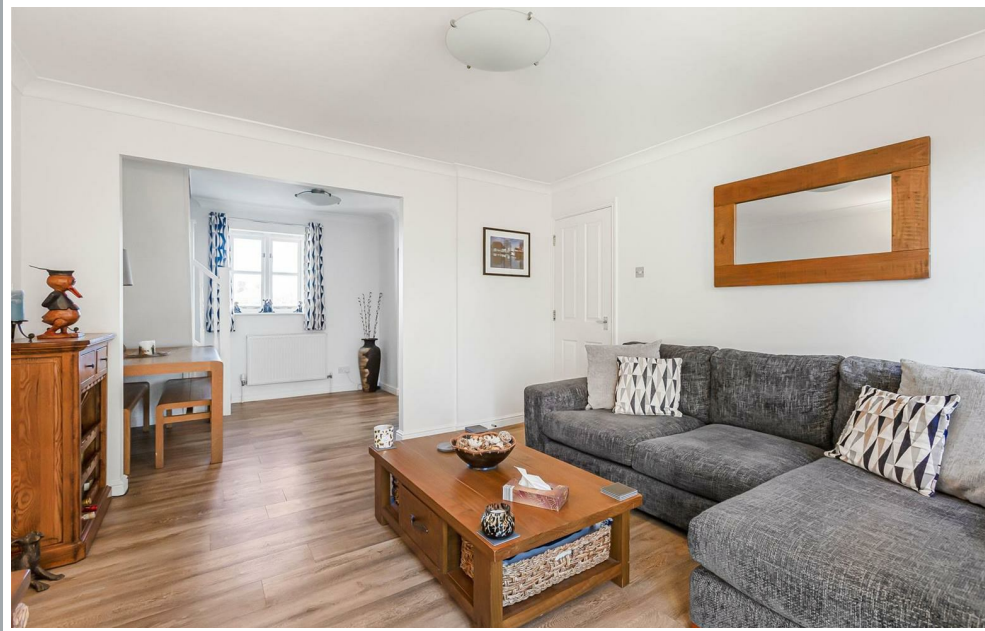
Set on the historic Folly, this property enjoys a superb location just a short walk from Hertford town centre, offering an excellent range of transport links, shops, bars and restaurants. The popular Old Barge public house is close by, along with the open green spaces of Hartham Common and the scenic River Lea, while Hertford's well-known Saturday street market is also within easy reach.



70 Fore Street, Hertford, Hertfordshire, SG14 1BY



70 Fore Street, Hertford, Hertfordshire, SG14 1BY



70 Fore Street, Hertford, Hertfordshire, SG14 1BY





70 Fore Street, Hertford, Hertfordshire, SG14 1BY



70 Fore Street, Hertford, Hertfordshire, SG14 1BY

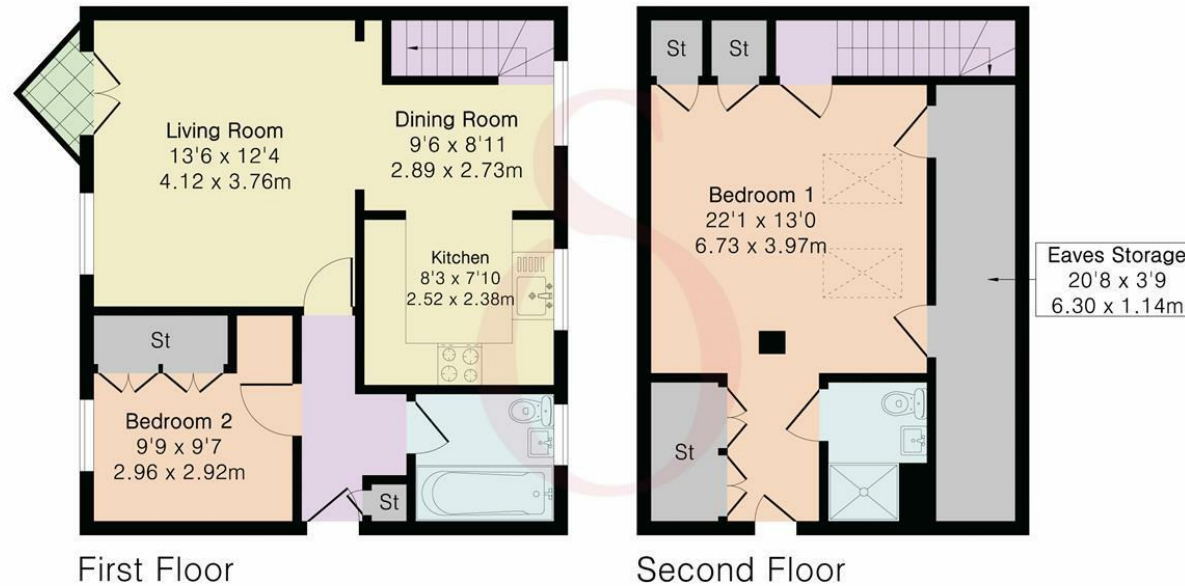


70 Fore Street, Hertford, Hertfordshire, SG14 1BY

Approximate Gross Internal Area 833 sq ft - 78 sq m

First Floor Area 514 sq ft – 48 sq m

Second Floor Area 319 sq ft – 30 sq m



Floor plan produced in accordance with RICS Property Measurement 2nd Edition. Although Pink Plan Ltd ensures the highest level of accuracy, measurements of doors, windows and rooms are approximate and no responsibility is taken for error, omission or misstatement. These plans are for representation purposes only and no guarantee is given on the total square footage of the property within this plan. The figure icon is for initial guidance only and should not be relied on as a basis of valuation.



These particulars, whilst believed to be accurate are set out as a general outline only for guidance and do not constitute any part of an offer or contract. Intending purchasers should not rely on them as statements of representation of fact, but must satisfy themselves by inspection or otherwise as to their accuracy. No person in this firm's employment has the authority to make or give any representation or warranty in respect of the property.

