



**Connells**

Netherfield Eastbourne Road  
Blindley Heath LINGFIELD

Netherfield Eastbourne Road  
Blindley Heath LINGFIELD RH7 6JN

for sale offers in excess of  
**£650,000**



### Property Description

A beautifully renovated four-bedroom detached home, set within a peaceful semi-rural location, offering stylish modern living combined with space, privacy and an attractive setting.

The property has been thoughtfully updated to create a clean, contemporary interior with well-proportioned accommodation ideally suited to modern family life. The layout provides a natural flow between living spaces, creating a bright and welcoming environment that works equally well for everyday living and entertaining.

There are four generously sized bedrooms, offering flexibility for families, home working or guest accommodation. The overall finish throughout the property is crisp and refined, allowing incoming buyers to move straight in with minimal work required.

Outside, the property benefits from surrounding outdoor space, providing an excellent area for relaxation, entertaining or enjoying the open aspect of its location. The setting offers a strong sense of privacy while still feeling connected to neighbouring villages and amenities.

Despite its tranquil position, Netherfield is well located for access to local schools, shops and transport links, making it an ideal choice for those seeking a balance between countryside living and everyday convenience.

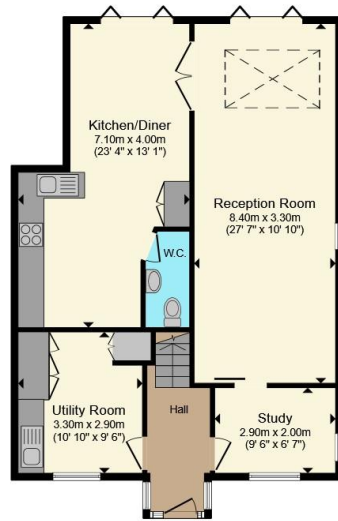
An impressive, modernised detached home in a highly appealing location. Early viewing is recommended.



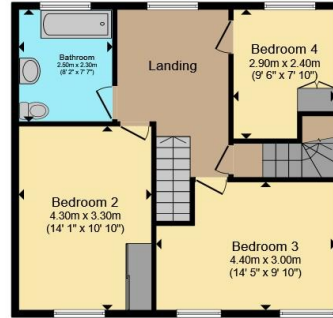




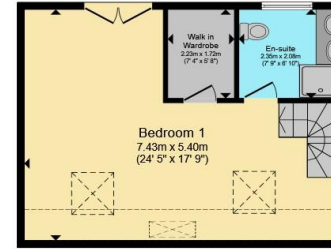




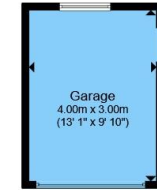
**Ground Floor**



**First Floor**



**Second Floor**



**Garage**

Total floor area 178.5 m<sup>2</sup> (1,921 sq.ft.) approx

This floor plan is for illustrative purposes only. It is not drawn to scale. Any measurements, floor areas (including any total floor area), openings and orientation are approximate. No details are guaranteed, they cannot be relied upon for any purpose and they do not form part of any agreement. No liability is taken for any error, omission or misstatement. A party must rely upon its own inspection(s). Powered by [www.propertybox.io](http://www.propertybox.io)

**Connells**

To view this property please contact Connells on

**T 01342 325 911**  
**E [eastgrinstead@connells.co.uk](mailto:eastgrinstead@connells.co.uk)**

90 London Road  
 EAST GRINSTEAD RH19 1EP

EPC Rating: D Council Tax  
 Band: F

Tenure: Freehold

**view this property online [connells.co.uk/Property/EGR405466](http://connells.co.uk/Property/EGR405466)**



1. MONEY LAUNDERING REGULATIONS Intending purchasers will be asked to produce identification documentation at a later stage and we would ask for your co-operation in order that there will be no delay in agreeing the sale. 2. These particulars do not constitute part or all of an offer or contract. 3. The measurements indicated are supplied for guidance only and as such must be considered incorrect. Potential buyers are advised to recheck measurements before committing to any expense. 4. We have not tested any apparatus, equipment, fixtures, fittings or services and it is in the buyers interest to check the working condition of any appliances.

Connells Residential is registered in England and Wales under company number 1489613, Registered Office is Cumbria House, 16-20 Hockliffe Street, Leighton Buzzard, Bedfordshire, LU7 1GN. VAT Registration Number is 500 2481 05.

**See all our properties at [www.connells.co.uk](http://www.connells.co.uk) | [www.rightmove.co.uk](http://www.rightmove.co.uk) | [www.zoopla.co.uk](http://www.zoopla.co.uk)**

Property Ref: EGR405466 - 0003