

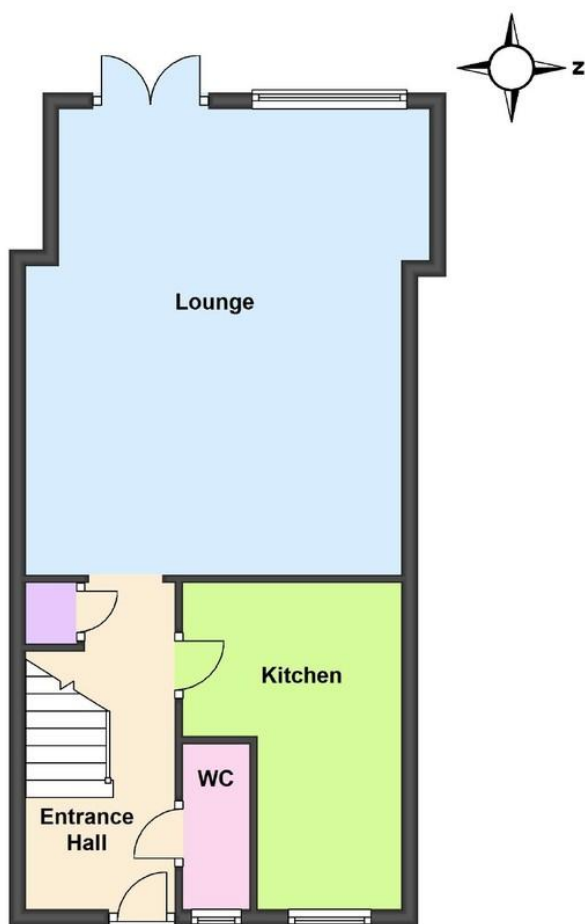


- Central Rustington
- Extended House
- 2/3 Bedrooms
- Spacious Lounge/Dining Room
- Modern Kitchen
- Available End of July/Beginning August
- Garage & Garden
- Council Tax Band - 'C'
- EPC Rating: - 'C'

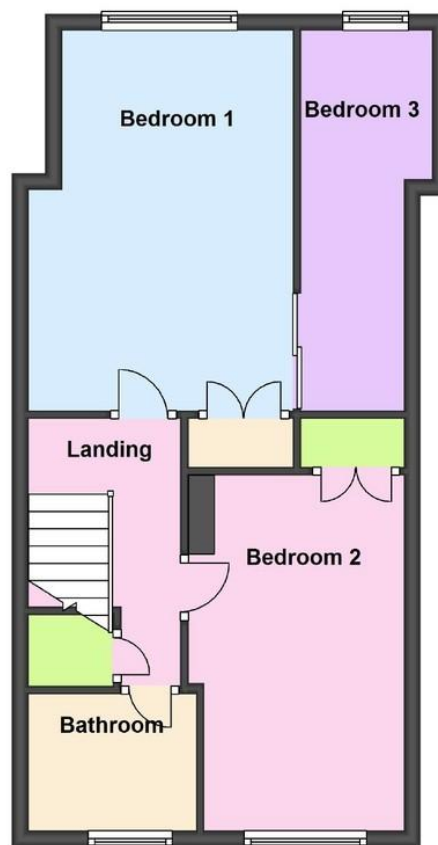
47 Church Road, Rustington BN16 3NN

£1,400 pcm

Ground Floor



First Floor



Entrance Hall

Cloakroom

Kitchen
13' x 8'10 max

Lounge/Dining Room
19'8 x 15'

Bedroom 1
16'10 x 10'5

Bedroom 2
14'1 x 8'10

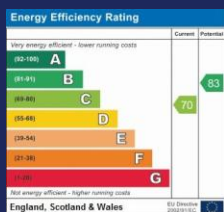
Bedroom 3
16'10 x 5'1 max

Bathroom/WC

Garage

West Rear Garden

The information and measurements contained within these details are for guidance only and do not form part of any contract.



**90 THE STREET, RUSTINGTON, WEST
SUSSEX, BN16 3NJ**

lettings@hawkemetcalf.co.uk

www.hawkemetcalf.co.uk

01903 850450