



Room 1, Tamworth Road, Long Eaton  
£560pcm

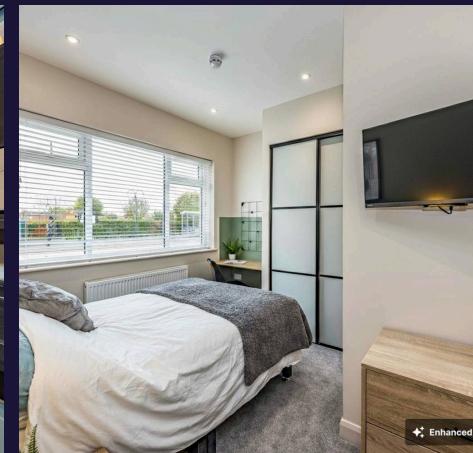


## Room 1, Tamworth Road

Long Eaton, Nottingham

Prepare to be impressed by this stunning semi-detached shared house, fully renovated to the highest standard, offering a luxurious living experience. Step inside to discover a beautifully designed bedroom which comes fully furnished and ready to move in. The property boasts triple glazing, ensuring a peaceful atmosphere and energy efficiency.

The heart of this home is the shared living space, ideal for socialising with housemates and relaxing after a long day. The modern kitchen features built-in appliances, perfect for whipping up culinary delights. With bills included, enjoy hassle-free living in this immaculately maintained property. Located in a vibrant neighbourhood, this home is surrounded by local amenities and great transport links, providing everything you need within easy reach. Don't miss the opportunity to view this exquisite property and experience its charm first hand.



Additional benefits include access to a shared garden featuring a shed, an outhouse, and convenient side access from the front of the property.

Available from 31st July 2026, this fully furnished property includes all bills. Bedroom 1 is located on the ground floor of the property with an en-suite bathroom.

Contact Comfort Estates today to arrange a viewing!

Prepare to be impressed by this stunning semi-



### **Bedroom**

11' 6" x 12' 8" (3.51m x 3.86m)

Bedroom 1 is located on the ground floor, at the front of the property - offering a blend on modern comfort and practically. This spacious room comes fully furnished and includes a built in wardrobe, desk space, drawers, bed with mattress and wall mounted TV.

### **En-suite Bathroom**

The room benefits from an en-suite bathroom which features a sleek shower cubicle, sink with vanity, mirror, toilet and radiator. Finished in neutral tones with a pop of black, the space feels bright and modern.

### **Lounge**

11' 9" x 10' 4" (3.59m x 3.15m)

This inviting shared lounge, located on the ground floor, has been decorated to a modern standard and offers a comfortable space to relax. The room comes complete with a sofa, breakfast bar and stools, coffee table, and TV. There's also a convenient cupboard housing the shared washing machine.

### **Kitchen**

11' 2" x 7' 3" (3.40m x 2.21m)

The brand-new kitchen is beautifully finished and fully equipped with built-in appliances, offering ample worktop space and plenty of storage. Appliances include an oven, hob, extractor fan, microwave, dishwasher, tumble dryer, large fridge/freezer, and sink - everything you need for modern, convenient living.



FLOOR 1

GROSS INTERNAL AREA  
 FLOOR 1 40.6 m<sup>2</sup> FLOOR 2 42.3 m<sup>2</sup> FLOOR 3 27.2 m<sup>2</sup>  
 TOTAL : 110.1 m<sup>2</sup>  
 SIZES AND DIMENSIONS ARE APPROXIMATE, ACTUAL MAY VARY.



FLOOR 2

GROSS INTERNAL AREA  
 FLOOR 1 40.6 m<sup>2</sup> FLOOR 2 42.3 m<sup>2</sup> FLOOR 3 27.2 m<sup>2</sup>  
 TOTAL : 110.1 m<sup>2</sup>  
 SIZES AND DIMENSIONS ARE APPROXIMATE, ACTUAL MAY VARY.



FLOOR 3

GROSS INTERNAL AREA  
 FLOOR 1 40.6 m<sup>2</sup> FLOOR 2 42.3 m<sup>2</sup> FLOOR 3 27.2 m<sup>2</sup>  
 TOTAL : 110.1 m<sup>2</sup>  
 SIZES AND DIMENSIONS ARE APPROXIMATE, ACTUAL MAY VARY.



## Comfort Estates

Comfort Estates, 47 Derby Road - NG1 5AW

0115 933 8997 • [info@comfortestates.co.uk](mailto:info@comfortestates.co.uk) • [www.comfortestates.co.uk](http://www.comfortestates.co.uk)