

Need a Mortgage in principle to make offers? Call us now for quick assistance!
0121 775 0101



Do you need to sell? Start your journey now! Call us we can help.
0121 775 0101



SCAN FOR MORE INFO
SIZE - 852 Sq Ft
TENURE - Freehold
COUNCIL TAX - Solihull Metropolitan Borough Council - C
BROADBAND - Upload Max 1000Mbps Download Max 1800Mbps
MOBILE SERVICES - EE - 87%, 3 - 82%, Vodafone - 82%, 02 - 80%
EPC - TBC
PARKING - For at least 2 Cars
FLOODRISK - Very Low
SERVICES - Mains
COVENANTS - N/A

135 Summerfield Road

Olton, Solihull, B92 8PY
Offers in Excess of £290,000

This delightful semi-detached house presents a wonderful opportunity for those looking to create their forever home. This property, while requiring some updating, offers fantastic potential for those looking to put their own stamp on a home in a desirable location and is perfect for first time buyers and investors alike.

FEATURES

- Semi-Detached Property Offered with No Upward Chain
- Requiring Some Updating
- Two Reception Rooms
- Kitchen with Conservatory Off
- Two Good Sized Double Bedrooms
- Third Single Nursery/Home Office
- Shower Room
- Delightful Rear Garden
- Driveway Parking
- Potential to Create a Side Garage or Extension (STPP)
- Convenient Location

Are you an investor interested in expanding your portfolio?

Call 0121 775 0101 to provide your investment criteria for alerts.



SCAN TO VIEW OUR WEEKLY FILMS & SUBSCRIBE

Sneak Peeks

Every week, we unveil "Sneak Peeks," a feature showcasing exclusive properties before they hit Rightmove and other platforms.

The Landlord Club

Join our Landlord Club for weekly updates on legislation, market trends, and our Letting Director's 'Investment Pick of the Week' for optimal ROI.

HTSPMD

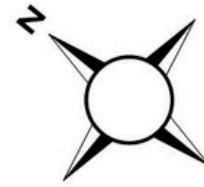
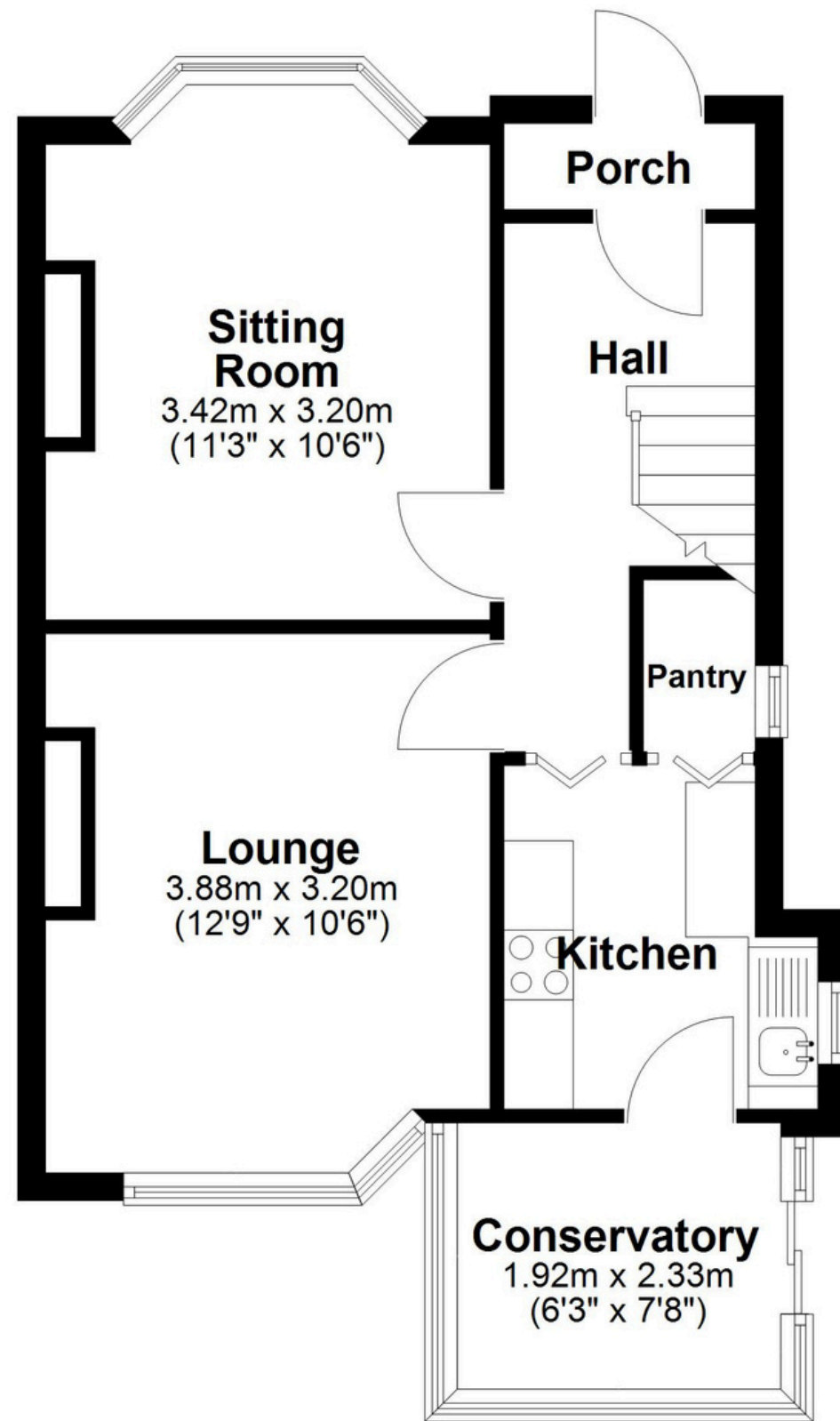
Tune into 'How's The Solihull Property Market Dom' weekly for a quick, insightful snapshot of the market.

The Mortgage Update

Get weekly insights and the best deals with our Mortgage Update, your shortcut to navigating the complex mortgage landscape confidently.

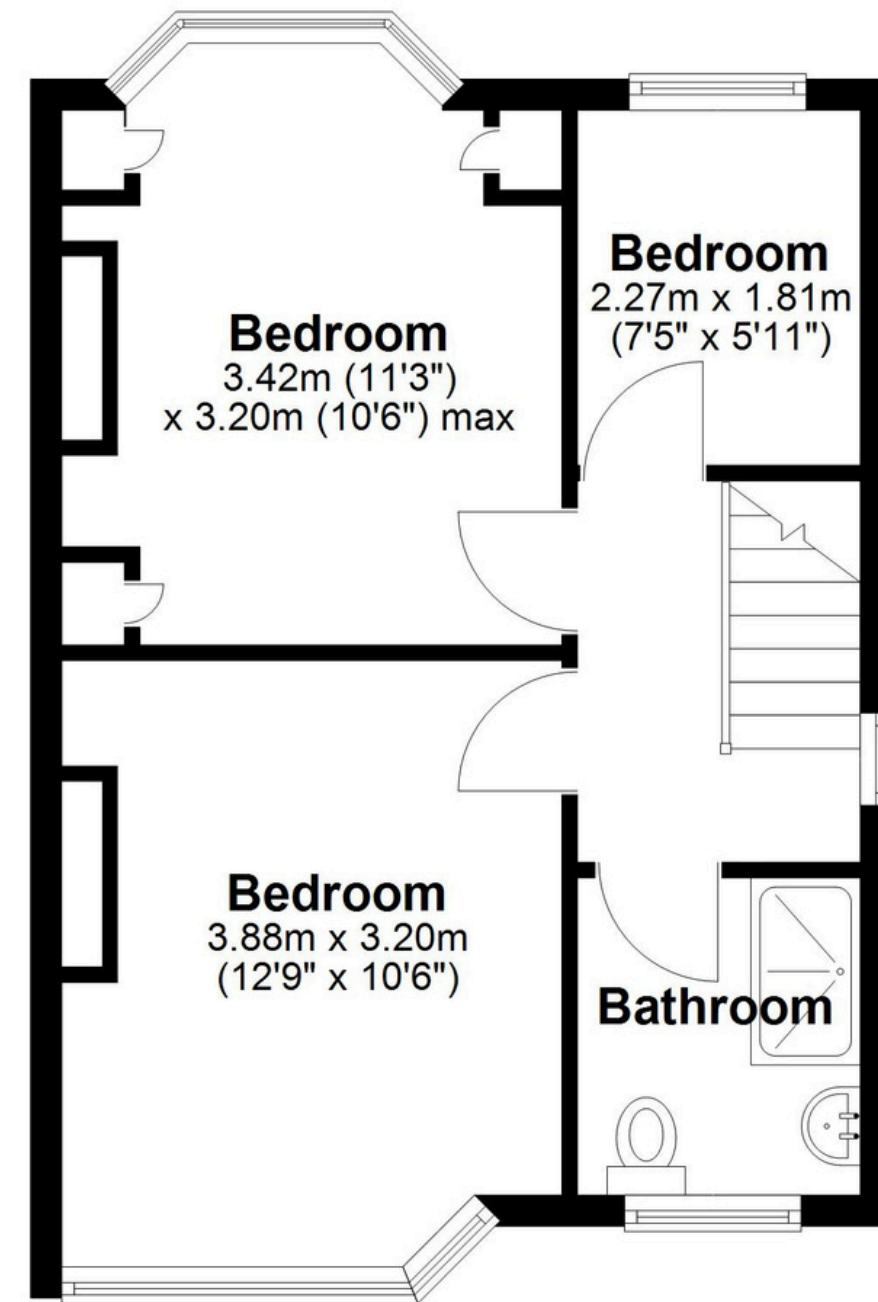
Ground Floor

Approx. 42.3 sq. metres (455.8 sq. feet)



First Floor

Approx. 36.8 sq. metres (396.4 sq. feet)



Total area: approx. 79.2 sq. metres (852.1 sq. feet)

This floor plan is for illustration purposes only, this is not intended to be a measured/scaled survey or comply with RICS guidelines. All measurements (including total floor area) openings, orientation and floor area are approximate. No details are guaranteed, they cannot be relied upon for any purpose and do not form part of any agreement. A party must rely upon its own inspection(s). No responsibility is taken for any error, omission, or mis-statement.

Plan produced using PlanUp.