



Mill Lane

London, NW6

£3,250 per month
(£750 per week)

Three double bedroom apartment, newly redecorated with direct access to its own private garden. The property is located over the ground and has an open plan living kitchen area with direct access to the garden.

CHESTERTONS



Mill Lane

London, NW6

- 3 Bedroom
- Private Garden
- No Parking Available
- Flexible On Furniture
- HMO



Three double bedroom apartment, newly redecorated with direct access to its own private garden. The property is located over the ground and has an open plan living kitchen area with direct access to the garden, 3 spacious bedrooms with ample storage, one family bathroom and a separate WC.

The apartment is located on Mill Lane allowing quick access to the amenities on West End Lane as well as West Hampstead Underground (Jubilee), West Hampstead Thameslink and Overground Stations.

Deposit Required: £3,750.00
Local Authority: London Borough Of Camden
Council Tax Band: E
EPC Rating: C
Furnished, Part Furnished, Unfurnished

Score	Energy rating	Current	Potential
92+	A		
81-91	B		
69-80	C	70 C	77 C
55-68	D		
39-54	E		
21-38	F		
1-20	G		

Chestertons Hampstead Lettings

55-56 Hampstead High Street
 Hampstead
 London
 NW3 1QH
 hampsteadlettingsusers@chestertons.co.uk
 02077941125
 chestertons.co.uk

Additional tenant charges apply (fees apply to non-AST tenancies only)
 Tenancy Agreement Fee: £300
 References per Tenant/Guarantor: £60
 Inventory check (approx. £100 – £250 inc. VAT)
 chestertons.co.uk/property-to-rent/applicable-fees

Mill Lane, London, NW6

Approximate Gross Internal Floor Area = 79.2 sq m / 853 sq ft

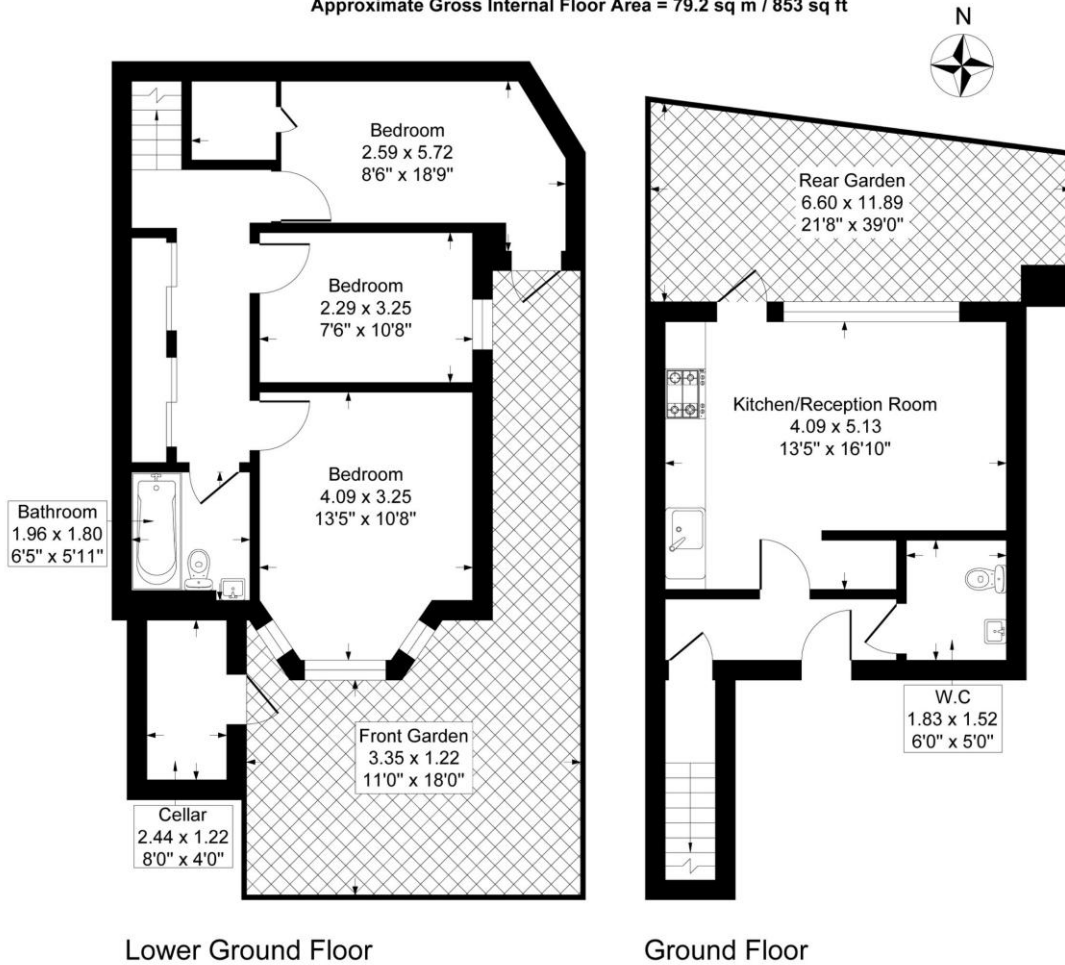


Illustration for identification purposes only, measurements are approximate, not to scale.