



Adelina Grove, E1

£750,000

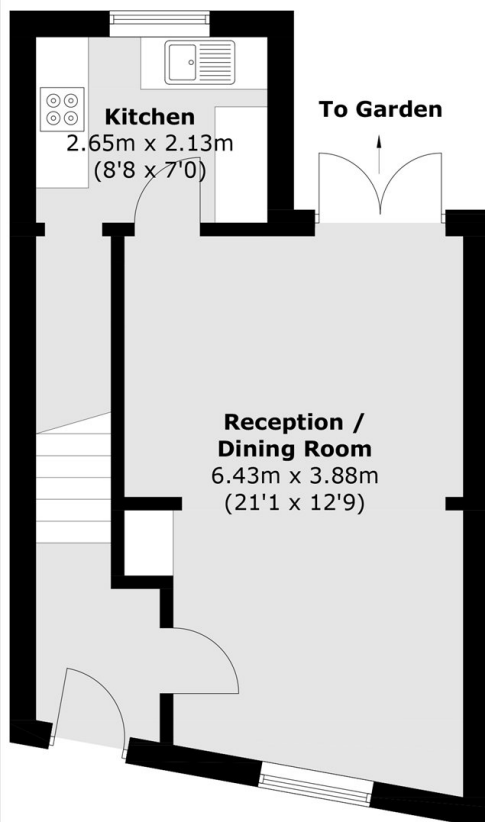
A three bedroom freehold house in a sought after location. This charming end of terrace house has a generously sized living room, with ample space to dine, a separate kitchen, and a private garden via the double doors to the rear of the living area. The first floor offers three bedrooms, two double rooms with ample storage and a single room, as well as the family bathroom and further storage.

The wide variety of bars, restaurants, markets, boutique shops and other entertainment venues of Shoreditch and The City are within a short distance whilst transport links include Whitechapel (Elizabeth, District, Hammersmith & City lines, Overground), and the DLR at Shadwell make for convenient travel to all corners of the City and beyond. The green spaces of Stepney Green Park, Bethnal Green Gardens and award winning Victoria Park are all local to the property.

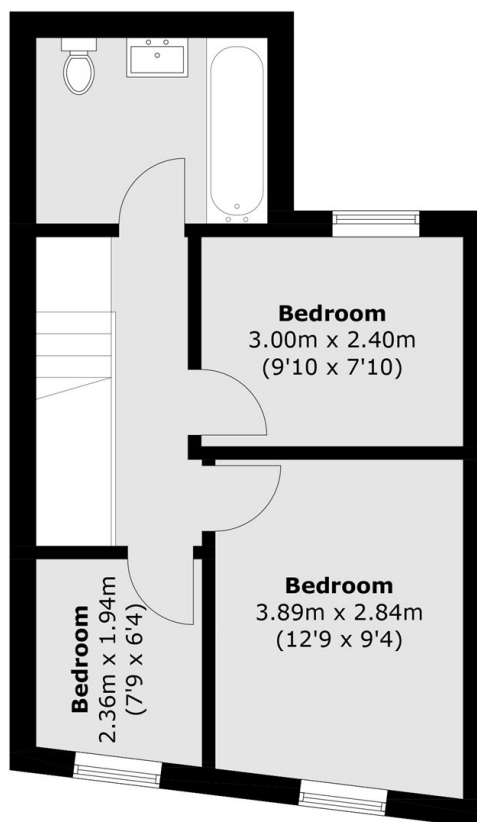
Features

- Three Bedrooms
- Freehold House
- End of Terrace
- Three Bedrooms
- Sought After Location
- Private Garden

Adelina Grove, London, E1



Ground Floor



First Floor

Total area (approx.): 71.8 sq. m (772.9 sq. ft)