



**The Street, Rayne, Braintree, CM77 6RW**

**welcome to**

**The Street, Rayne, Braintree**

William H Brown are pleased to present this spacious three double bedroom detached bungalow, offering comfortable living with the charm and convenience of village life, ideally located in the sought-after village of Rayne.



The accommodation is thoughtfully arranged and comprises an entrance hall, an open-plan lounge/kitchen/diner, ideal for both everyday living and entertaining, three generous double bedrooms and a family bathroom.

The property further benefits from double glazing and gas central heating, ensuring comfort throughout the year.

Externally, the property enjoys an enclosed rear garden, providing a private and secure space perfect for relaxing or entertaining, while the driveway offers off-street parking.

Rayne is a highly regarded Essex village, known for its strong community spirit, local amenities, traditional public houses and well-regarded primary school. The property is conveniently situated for access to Braintree town centre, offering a wider range of shopping, leisure facilities and restaurants. Excellent transport links are available via the A120 and A131, and Braintree railway station provides direct services to London Liverpool Street, making this an ideal location for commuters.

This attractive bungalow would suit a range of buyers including downsizers, families or those seeking single-storey living in a desirable village setting. Early viewing is highly recommended.

### **Entrance Hall**

Solid wood flooring, radiator, power points, loft access, French doors to open plan lounge/kitchen/dining room, doors to:-

### **Lounge / Kitchen / Diner**

17' 9" x 10' 2" ( 5.41m x 3.10m )  
Double glazed windows to rear aspect, base and eye level units with working surface, island with Oak working surface with base units, induction hob with extractor, double oven, space for fridge/freezer, space for washing machine, sink with drainer unit, cupboard housing wall mounted boiler, two radiators, wood panelled walls with inset for T.V, wood flooring, power points, T.V point, door to rear garden.

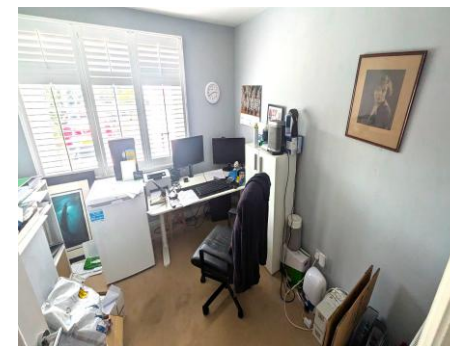


### **Bedroom One**

11' 7" x 9' 5" ( 3.53m x 2.87m )  
Double glazed window to front aspect, radiator, power points, T.V point.

### **Bedroom Two**

9' 9" x 8' 2" ( 2.97m x 2.49m )  
Double glazed window to front aspect, radiator, power points, shelving, built in wardrobe.



### **Bedroom Three**

9' 9" x 9' 9" ( 2.97m x 2.97m )  
Double glazed window to side aspect, radiator, power points.

### **Bathroom**

Enclosed P-bath with mixer taps, separate shower over with glass screen, wash hand basin with pedestal, W.C, heated towel rail, inset spotlights, heated towel rail, shelving, tiled flooring, extractor fan, underfloor heating.

### **Rear Garden**

To the rear of the property is a raised decking area with steps leading to the remainder laid lawn, enclosed by timber fencing. A gate grants access to the parking

### **Parking**

To the rear of the property there is parking for two vehicles



### **Agent Note**

This property is of timber frame construction



***view this property online*** [williamhbrown.co.uk/Property/BTR110256](http://williamhbrown.co.uk/Property/BTR110256)



welcome to

## The Street, Rayne Braintree

- Three Double Bedrooms
- Detached Bungalow
- Open Plan Lounge / Kitchen / Diner
- Family Bathroom
- Close to Amenities

Tenure: Freehold EPC Rating: Awaiting  
Council Tax Band: C

**£325,000**



Please note the marker reflects the postcode not the actual property

**view this property online** [williambrown.co.uk/Property/BTR110256](https://www.williambrown.co.uk/Property/BTR110256)



Property Ref:  
BTR110256 - 0002

1. MONEY LAUNDERING REGULATIONS Intending purchasers will be asked to produce identification documentation at a later stage and we would ask for your co-operation in order that there is no delay in agreeing the sale. 2. These particulars do not constitute part or all of an offer or contract. 3. The measurements indicated are supplied for guidance only and as such must be considered incorrect. Potential buyers are advised to recheck measurements before committing to any expense. 4. We have not tested any apparatus, equipment, fixtures or services and it is in the buyers interest to check the working condition of any appliances. 5. Where an EPC, or a Home Report (Scotland only) is held for this property, it is available for inspection at the branch by appointment. If you require a printed version of a Home Report, you will need to pay a reasonable production charge reflecting printing and other costs. 6. We are not able to offer an opinion either written or verbal on the content of these reports and this must be obtained from your legal representative. 7. Whilst we take care in preparing these reports, a buyer should ensure that his/her legal representative confirms as soon as possible all matters relating to title including the extent and boundaries of the property and other important matters before exchange of contracts.



william h brown



**01376 320018**



[braintree@williambrown.co.uk](mailto:braintree@williambrown.co.uk)



51-53 High Street, BRAINTREE, Essex, CM7 1JX



[williambrown.co.uk](https://www.williambrown.co.uk)