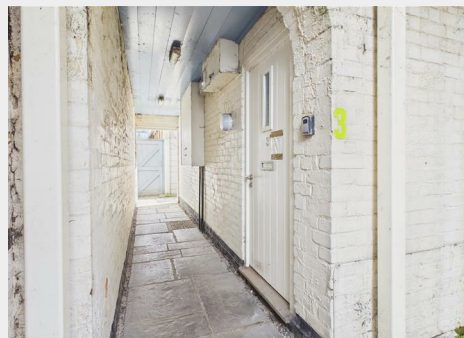
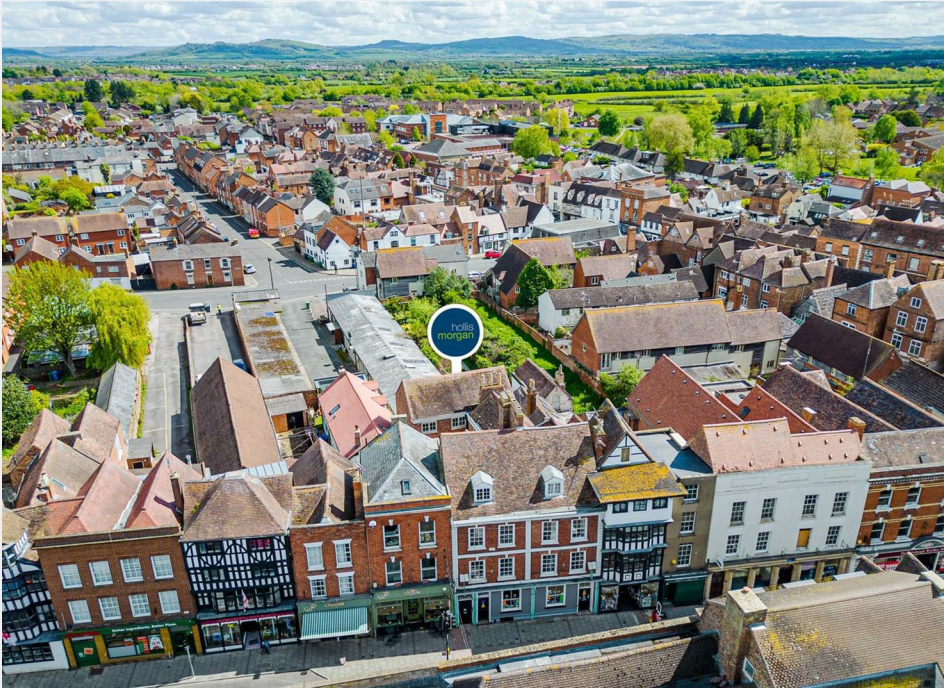


Printers Court, 139 High Street, Tewkesbury, Gloucestershire, Auction Guide Price +++ £200,000



- FOR SALE BY ONLINE AUCTION
- WEDNESDAY 17TH JUNE 2026
- VIRTUAL TOUR NOW ONLINE
- VIEWINGS – REFER TO DETAILS
- LEGAL PACK COMPLETE
- JUNE LIVE ONLINE AUCTION
- FREEHOLD BLOCK OF 3 FLATS
- BASIC UPDATING | 2 X 2 BED | 1 X 1 BED
- REDUCED - WAS £325K
- EXTENDED 8 WEEK COMPLETION

Hollis Morgan – JUNE LIVE ONLINE AUCTION – A Freehold BLOCK OF 3 X FLATS (1463 Sq Ft) in the Town Centre | Scope for BASIC UPDATING and INVESTMENT | REDUCED - was £325,000

Printers Court, 139 High Street, Tewkesbury, Gloucestershire, GL20 5JR

Accommodation

FOR SALE BY LIVE ONLINE AUCTION

ADDRESS | Printers Court, 139 High Street, Tewkesbury, Gloucestershire GL20 5JR

Lot Number 38

The Live Online Auction is on Wednesday 17th June 2026 @ 12:00 Noon
Registration Deadline is on Friday 12th June 2026 @ 16:00

The Auction will be streamed LIVE ONLINE via the Hollis Morgan website & you can choose to bid by telephone, proxy or via your computer. Registration is a simple online process – please visit the Hollis Morgan auction website and click “REGISTER TO BID”

PRE AUCTION OFFERS

On this occasion the vendors will NOT be considering pre auction offers.

THE PROPERTY

A Freehold block of 3 self contained flats (1463 Sq Ft) located just behind the High Street in the centre of popular Tewkesbury. Please refer to schedule below.

Flat 1 & 2 Vacant | Flat 3 Subject to AST Tenancy,

Tenure - Freehold
Council Tax - A | A | A
EPC - E | E | E

THE OPPORTUNITY

FREEHOLD BLOCK | SCOPE FOR UPDATING

The flats have been let for many years and would now benefit from updating with scope to increase the rental income or break up and resale. Please refer to independent rental appraisal.

SCHEDULE OF INCOME & ACCOMMODATION

GROUND FLOOR

Flat 3 – 1 Bedroom Flat | 425 Sq Ft

Let on AST contact @ £675 pcm | Commenced September 2016

FIRST FLOOR

Flat 2 – 2 Bedroom Flat | 536 Sq Ft

Vacant | Previously let for £700 pcm

SECOND FLOOR

Flat 1 – 2 Bedroom Flat | 502 Sq Ft

Vacant | Previously let for £700 pcm

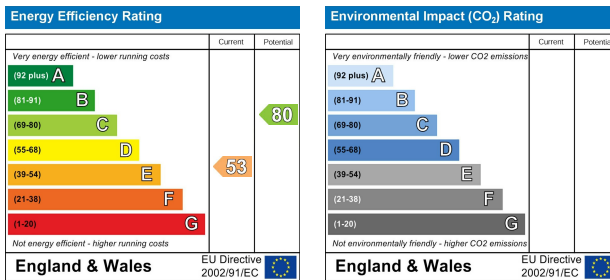
LOCATION

Tewkesbury is an historic riverside market town in Gloucestershire with a 12th Century Abbey and medieval streets boasting a good selection of speciality shops, antique shops, tea shops, inns and restaurants. The market town dates back to the 7th Century now with a population of over 10,000 people. Tewkesbury is north of Cheltenham (9 miles) and Gloucester (11 miles). The M5 Motorway junction 9 is 1.5 miles giving access to Birmingham (45 miles) and Bristol (48 miles). Ashchurch Parkway (Nearest train station connecting to Birmingham, Bristol and Cardiff) is approximately 2 miles from the subject property.

Floor plan



EPC Chart



9 Waterloo Street
Clifton
Bristol
BS8 4BT

Tel: 0117 973 6565
Email: post@hollismorgan.co.uk
www.hollismorgan.co.uk

Hollis Morgan Property Limited, registered in England, registered 7275716.
Registered address, 5 Upper Belgrave Road, Clifton, Bristol BS8 2XQ

Auction Property Details Disclaimer

Hollis Morgan endeavour to make our sales details clear, accurate and reliable in line with the Consumer Protection from Unfair Trading Regulations 2008 but they should not be relied on as statements or representations of fact.

Please refer to our website for further details.