



Clements estate agents



## Cleves Road, Hemel Hempstead, HP2 7LQ Offers In Excess Of £210,000

Located in the charming area of Woodhall Farm in Hemel Hempstead, this delightful top floor flat offers a perfect blend of comfort and modern living. With two well-proportioned bedrooms, this property is ideal for couples, or individuals seeking a stylish and spacious home. The flat is presented in good decorative order, ensuring that you can move in with ease and enjoy your new surroundings from day one. The spacious room sizes create an inviting atmosphere, allowing for both relaxation and entertaining. The modern kitchen is equipped with contemporary fittings, similarly, the bathroom has been thoughtfully designed to provide a modern space. Located in a desirable area, this property benefits from convenient access to local amenities, parks, and transport links, making it an excellent choice for those who value both tranquillity and connectivity. Whether you are looking to settle down or invest, this top floor flat on Cleves Road is a wonderful opportunity not to be missed.

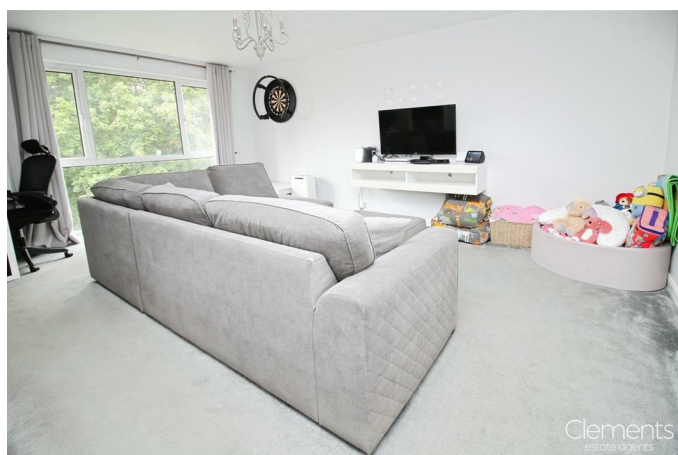
Located in the charming area of Woodhall Farm in Hemel Hempstead, this delightful top floor flat offers a perfect blend of comfort and modern living. With two well-proportioned bedrooms, this property is ideal for couples, or individuals seeking a stylish and spacious home. The flat is presented in good decorative order, ensuring that you can move in with ease and enjoy your new surroundings from day one. The spacious room sizes create an inviting atmosphere, allowing for both relaxation and entertaining. The modern kitchen is equipped with contemporary fittings, similarly, the bathroom has been thoughtfully designed to provide a modern space. Located in a desirable area, this property benefits from convenient access to local amenities, parks, and transport links, making it an excellent choice for those who value both tranquillity and connectivity. Whether you are looking to settle down or invest, this top floor flat on Cleves Road is a wonderful opportunity not to be missed.

#### **COMMUNAL ENTRANCE**

**FRONT DOOR TO :**

**ENTRANCE HALLWAY**

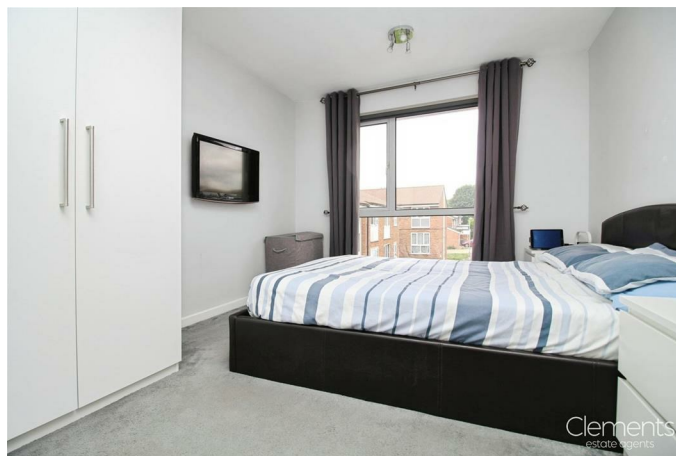
**LOUNGE / DINER 17'1 x 12'4 (5.21m x 3.76m)**



**KITCHEN 9 x 8'9 (2.74m x 2.67m)**



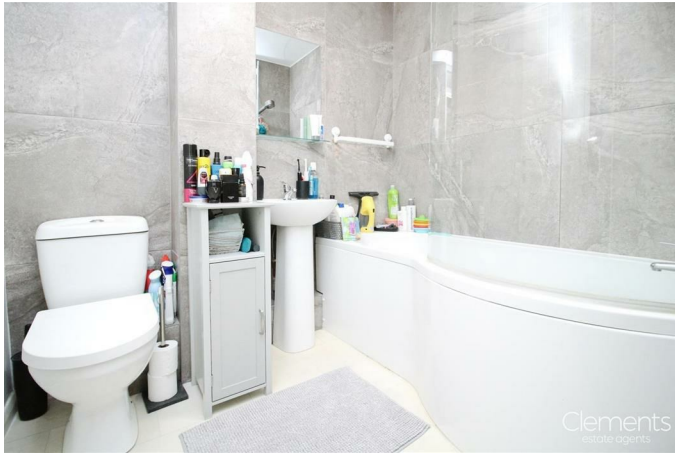
**BEDROOM ONE 14'1 x 10 (4.29m x 3.05m)**



**BEDROOM TWO 10'10 x 7'5 (3.30m x 2.26m)**



## BATHROOM



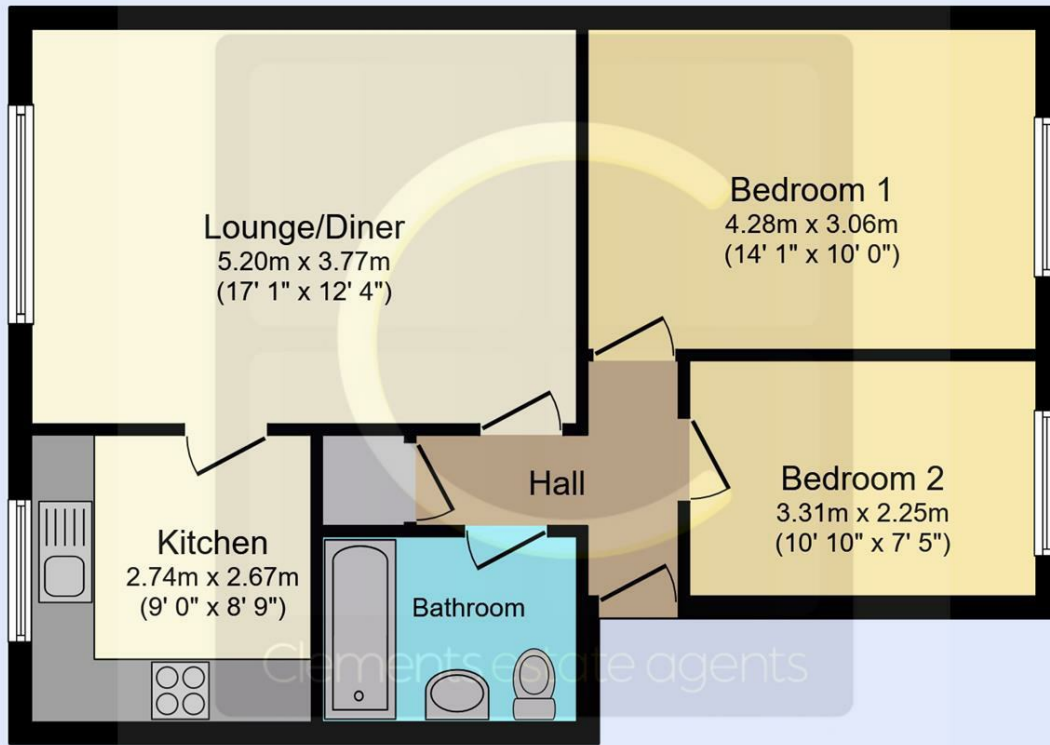
## OUTSIDE



## COMMUNAL GARDENS & PARKING



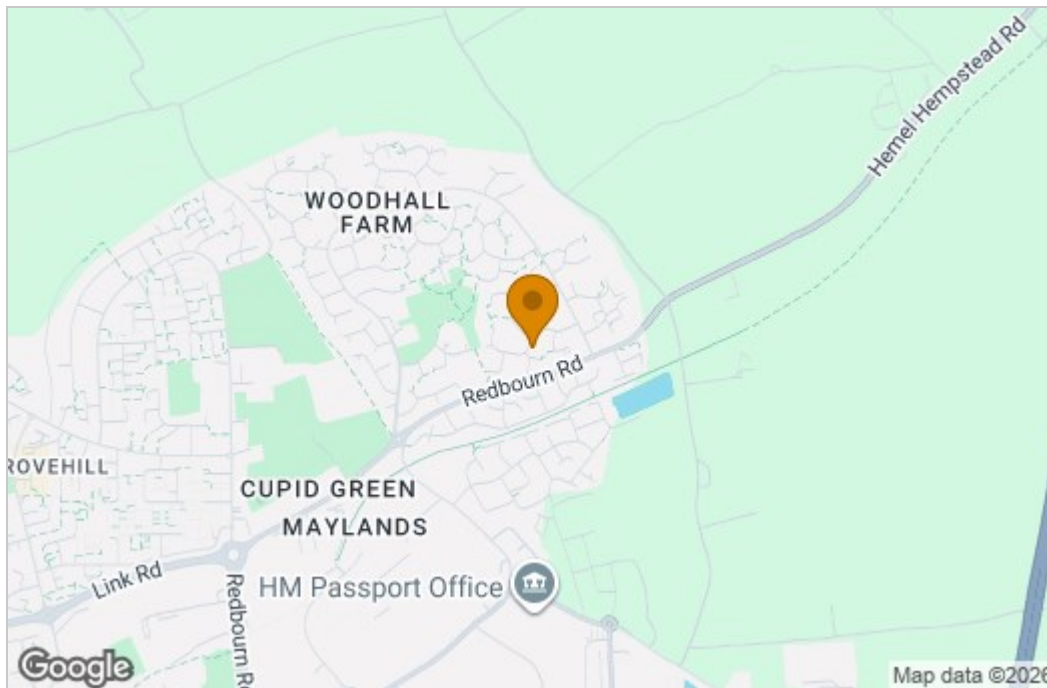
# Floor Plan



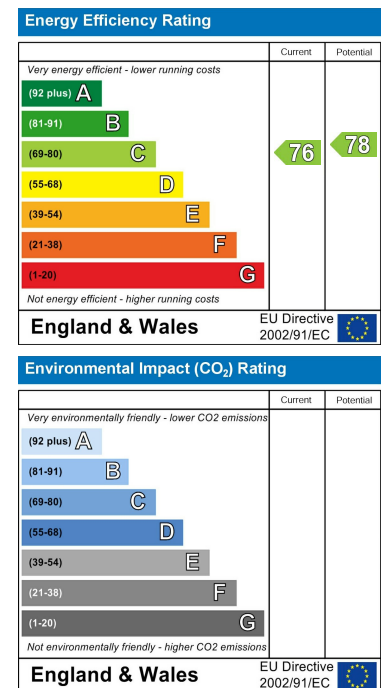
This floor plan is for illustrative purposes only. It is not drawn to scale. Any measurements, floor areas (including any total floor area), openings and orientations are approximate. No details are guaranteed, they cannot be relied upon for any purpose and do not form any part of any agreement. No liability is taken for any error, omission or misstatement. A party must rely upon its own inspection(s). Powered by www.Propertybox.io



# Area Map



# Energy Efficiency Graph



These particulars, whilst believed to be accurate are set out as a general outline only for guidance and do not constitute any part of an offer or contract. Intending purchasers should not rely on them as statements of representation of fact, but must satisfy themselves by inspection or otherwise as to their accuracy. No person in this firm's employment has the authority to make or give any representation or warranty in respect of the property.