



Mastmaker Road, E14

£550,000

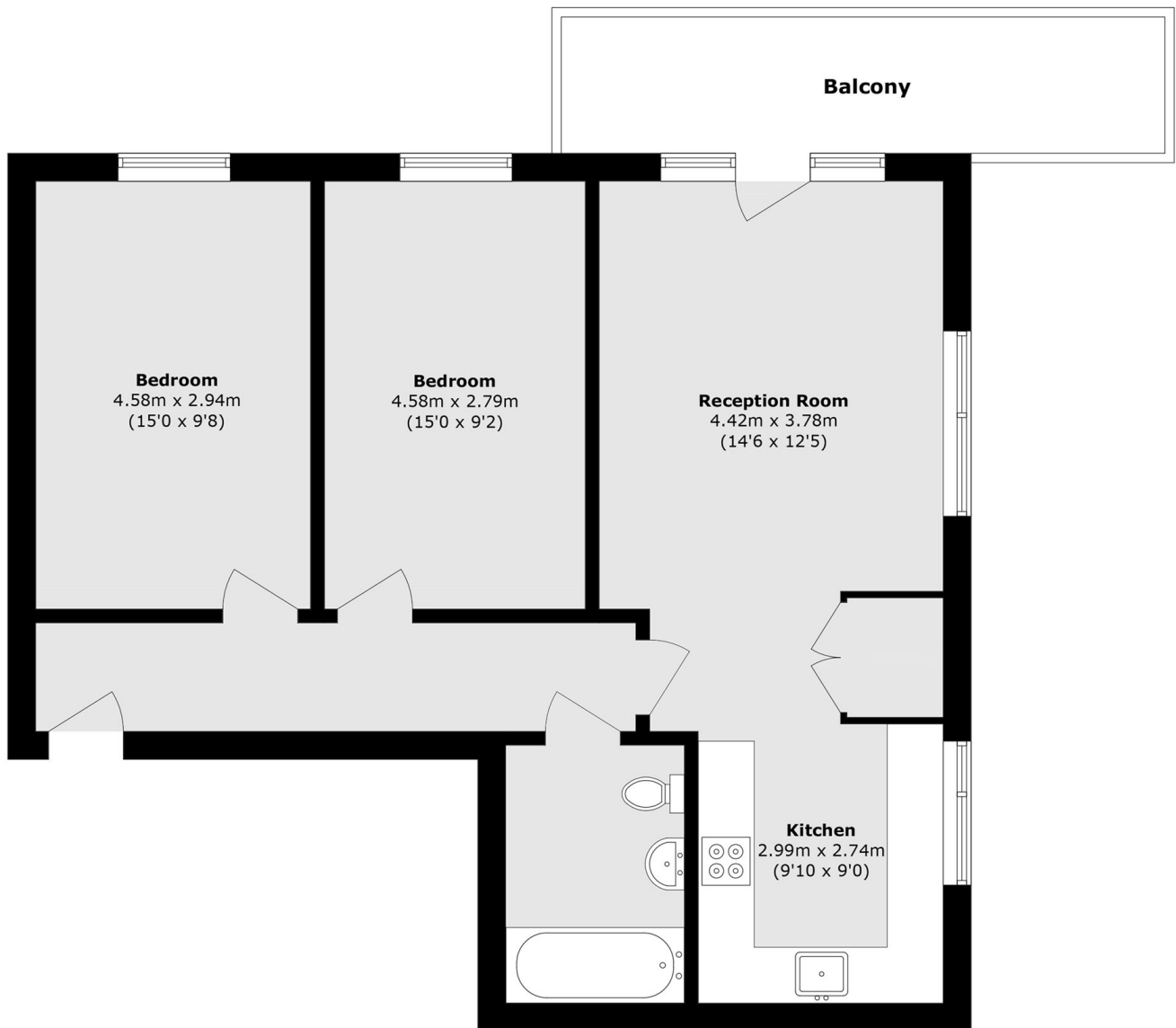
Located on the 11th floor of a sought-after development, this immaculate two-bedroom apartment is presented to the market in excellent condition. The property benefits from a private terrace, an abundance of natural light, a secure entry phone system, and a convenient location within close proximity to Canary Wharf.

Phoenix Heights is ideally located with South Quay DLR station just 0.2 miles away, providing quick and easy access to Canary Wharf and the City.

Features

- Secure entry phone system
- 661 Square Feet Internal Space
- Two Double Bedrooms
- Canary Wharf Location
- 11th Floor
- Chain Free

Mastmaker Road, London, E14



Total area (approx.): 71.9 sq. m (773.9 sq. ft)
Balcony area (approx.): 9.4 sq. m (101.1 sq. ft)