



A three bedroom bundalow in a sought after location
Latimer Close, Little Chalfont, HP6 6QS

ROBSONS

Asking Price: £3,150 pcm

A three bedroom bundalow in a sought after location

Latimer Close, Little Chalfont, HP6 6QS

• ENTRANCE HALL • LOUNGE OPEN PLAN TO KITCHEN • LIVING ROOM • BEDROOM/STUDY • FIRST FLOOR - TWO BEDROOMS • BATHROOM • REAR GARDEN • DRIVEWAY • GARAGE for storage only • UNFURNISHED

Description

A well-presented three bedroom chalet bungalow situated in a quiet cul-de-sac in the heart of Little Chalfont. The property offers flexible accommodation comprising a reception room, spacious open-plan kitchen/dining area, downstairs double bedroom and shower room, with two further double bedrooms and a family bathroom upstairs. Further benefits include a large private garden, garage, and driveway parking. Conveniently located close to local shops, schools, and Little Chalfont station.

** An advance reservation payment of one weeks rent is required to secure the property **

Location

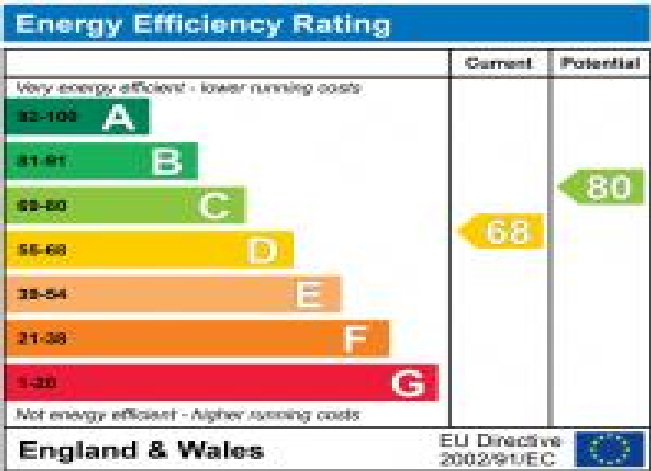
Conveniently situated for Chalfont & Latimer Station and the amenities of Little Chalfont and in close proximity to nearby parks, woodland and open countryside including the picturesque Chess Valley.






Additional Information

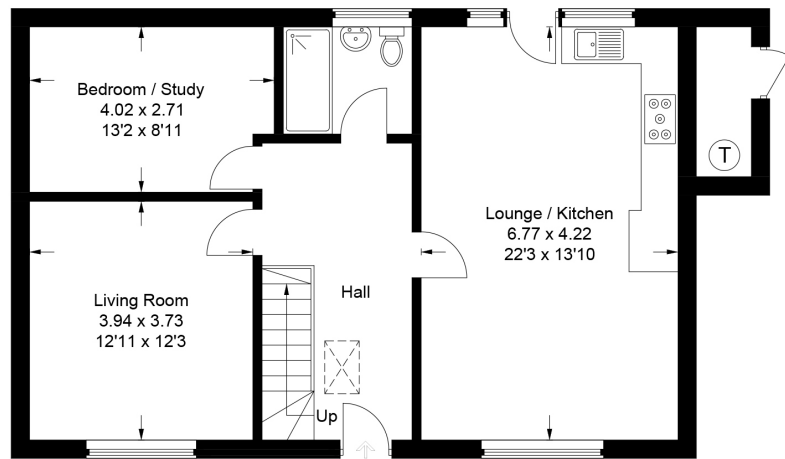
- Local Authority: Chiltern
- Council Tax Band: E
- Deposit Amount: £3,634.00
- Reservation Payment: One weeks rent
- Energy Efficiency Rating: Band D
- Available Date: 29/05/2026



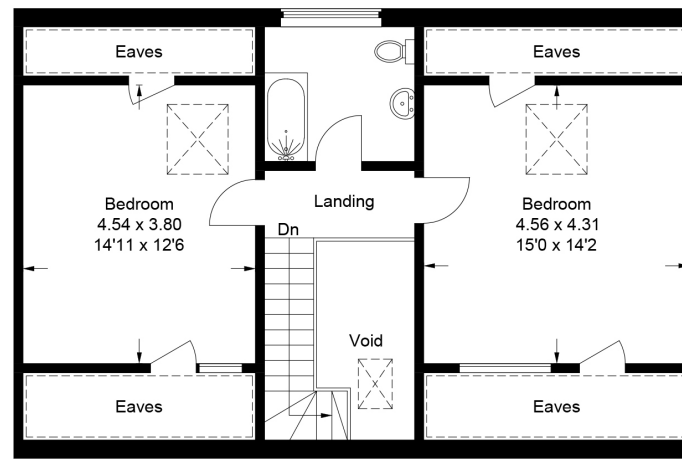
27 Latimer Close, Little Chalfont, HP6 6QS

Approximate Gross Internal Area
 Ground Floor = 71.8 sq m / 773 sq ft
 First Floor = 49.7 sq m / 535 sq ft
 Garage / External Cupboard = 16 sq m / 172 sq ft
 Total = 137.5 sq m / 1,480 sq ft
 (Excluding Void / Eaves)

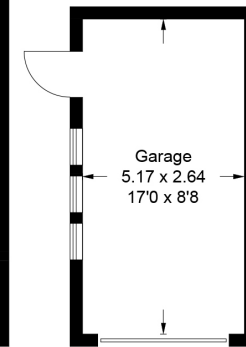
 = Reduced headroom below 1.5m / 5'0"



Ground Floor



First Floor



(Not Shown In Actual Location / Orientation)

This plan is for layout guidance only. Not drawn to scale unless stated. Windows and door openings are approximate. Whilst every care is taken in the preparation of this plan, please check all dimensions, shapes and compass bearings before making any decisions reliant upon them.

© CJ Property Marketing Ltd Produced for Robsons - Bucks



REGISTERED OFFICE 2-4 PACKHORSE ROAD, GERRARDS CROSS, BUCKINGHAMSHIRE, ENGLAND, SL9 7QE. COMPANY NO. 07557114. VAT NO. GB211239453