



29 Spectrum Buildings East Road, London, N1 6FB

£2,950 Per Week

- Two Double Bedrooms
- Private Balcony
- 0.3 Miles to Old Street Station
- Next to London Cycle Superhighway Route 1
- Two Bathrooms
- Walking Distance to Shoreditch Park
- 0.6 Miles to Hoxton Station

29 Spectrum Buildings East Road, London N1 6FB

Blakestanley are pleased to present this modern 2-bedroom, 2-bathroom flat in Hackney.

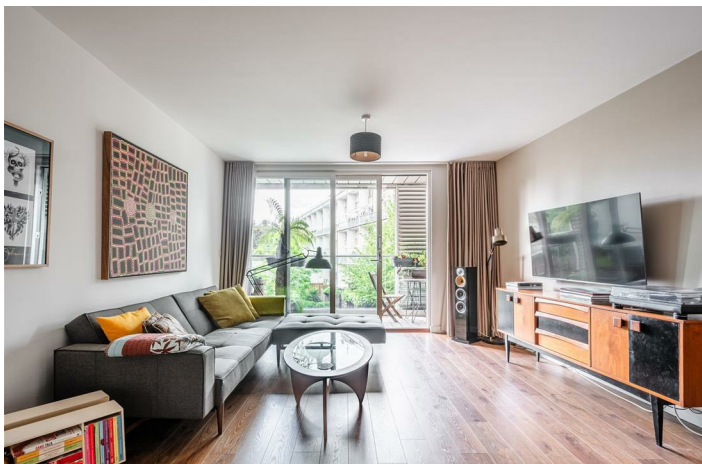
This flat offers a perfect blend of style and convenience through an open plan living and dining area; leading with a sleek, fully fitted kitchen with high-end appliances, followed by a spacious reception area, where you can step onto your private balcony for your enjoyment of outdoor space.

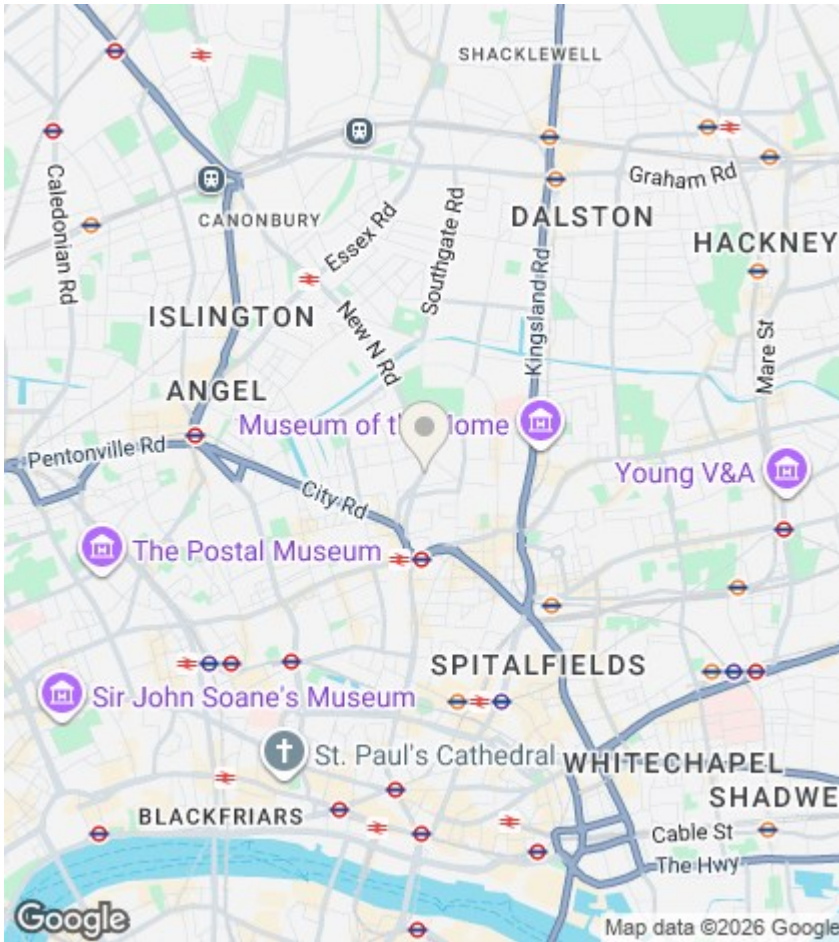
The master bedroom features an en-suite bathroom and built-in wardrobes, while the second bedroom too offers built-in wardrobes, as well as the flexibility to use as a guest room or home office. Both the main and en-suite bathrooms are bespoke to the property.

Located in the desirable Spectrum Buildings, enjoy EXCELLENT transport links via Old Street or Hoxton Station as well as being a short walk away to a wealth of local cafes, restaurants, and shops in local destinations such as Barbican, Shoreditch, Hoxton, Dalston and Columbia Road flower market.



Council Tax Band: E





Directions

Viewings

Viewings by arrangement only. Call 020 7254 7554 to make an appointment.

EPC Rating:

C

Energy Efficiency Rating		Current	Potential
Very energy efficient - lower running costs			
(92 plus)	A		
(81-91)	B		
(69-80)	C	75	75
(55-68)	D		
(39-54)	E		
(21-38)	F		
(1-20)	G		
Not energy efficient - higher running costs			
England & Wales		EU Directive 2002/91/EC	

