



Hiscox Way, Stoke Gifford Bristol BS34 8BX

welcome to

Hiscox Way, Stoke Gifford Bristol

This stylish apartment within Mulgrove Farm Village exudes style from the very outset. The very well presented property with private entrance and allocated parking offers generous room dimensions throughout which is complemented by the light, views and dual aspect credentials. Please contact us.

Hiscox Way Private Entrance

The property is highly attractive from the very outset. The handsome building's perimeter is complete with attractive herbaceous borders and the overall styling is chic and contemporary. A well presented private staircase leads upwards to the main landing and hallway.

Landing

Once through the secondary 'front door' the spacious reception hallway instantly accentuates the feeling of size and style as found throughout. Here offers storage and leads to all further areas. Complete with carpet, radiator and loft access above. Utility cupboard with storage and ideal for the washing machine.

Living Space

13' 9" max x 20' 9" max (4.19m max x 6.32m max)
The main living space accommodates lounging furniture, a dining table and kitchen with consummate ease. The very well presented space boasts two windows to the rear aspect offering a very pleasant outlook and tremendous light. Finished with spotlights over the kitchen and a pendant over the lounging space. Modern wood effect flooring completes the contemporary look perfectly.

Kitchen Area

The well equipped kitchen features stylish wall and base units and plenty of storage. Here includes and AEG integrated oven, matching gas hob, attractive brushed steel extractor fan and double basin with drainer. The marble effect worktop completes the aesthetic perfectly. * Note: the gas boiler is neatly located in the side cabinet to the window.

Bedroom

12' 4" max x 20' 9" max (3.76m max x 6.32m max)
The very well proportioned bedroom is light and bright and presented to the highest standard.....as we have come to expect here. The space is really elevated given it's dual aspect credentials having windows to both the front and side. There is ample space which includes a dedicated 'dressing area' complete with built-in storage. Please see the video tour for closer inspection.

Bathroom

6' 4" max x 5' 7" max (1.93m max x 1.70m max)
Again...beautifully presented!! The bathroom includes a bath with shower over and glass screen, WC, basin and chrome heated towel rail. The contemporary finish is complete with grey wood effect flooring, wall tiles and spot lights.

Exterior Parking

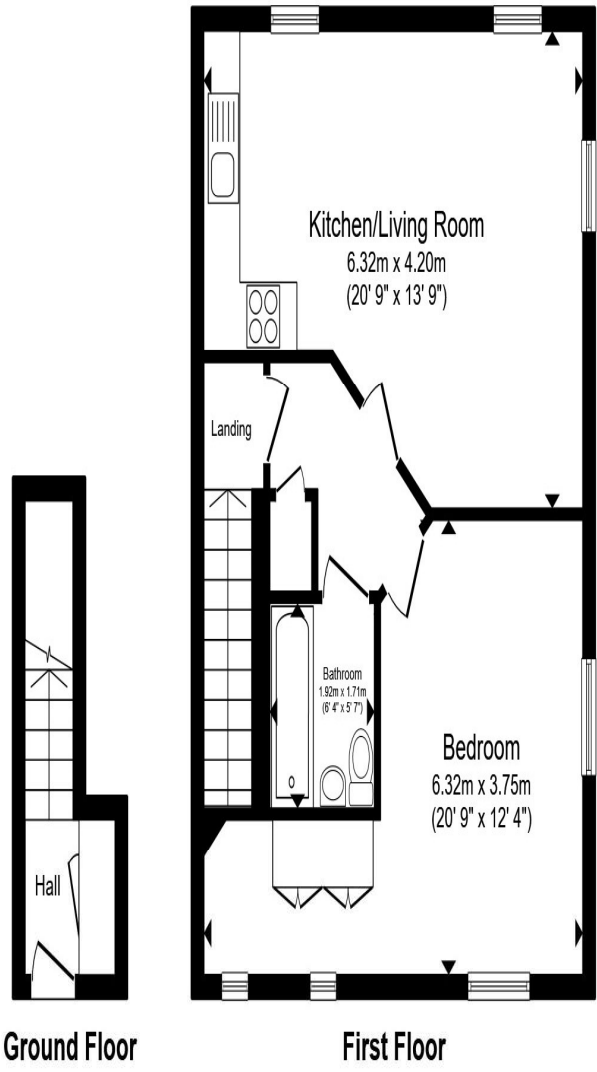
Allocated parking for one car.

Agents Notes

We have been advised the following:

Council Tax Band: A
Annual Service Charge: £1140
Total Lease Length: 999

It is recommended to have any financial or legal information check independently.



Total floor area 56.7 m² (610 sq.ft.) approx

This floor plan is for illustrative purposes only. It is not drawn to scale. Any measurements, floor areas (including any total floor area), openings and orientation are approximate. No details are guaranteed, they cannot be relied upon for any purpose and they do not form part of any agreement. No liability is taken for any error, omission or misstatement. A party must rely upon its own inspection(s). Powered by www.propertybox.io



welcome to
Hiscox Way,
Stoke Gifford Bristol

- Stylish One Bedroom Apartment with Private Entrance
- One of Stoke Gifford's Most Desirable Developments
- Spacious Kitchen-Diner / Well Proportioned Rooms Throughout
- Light and Bright with Pleasant Outlook (Front, Rear and Side).
- Dual Aspect Double Bedroom with Built-in in Storage and 'Dressing Space'

Tenure: Leasehold EPC Rating: B
Council Tax Band: A Service Charge: 1140.00
Ground Rent: Ask Agent

This is a Leasehold property with details as follows; Term of Lease 999 years from 01 Jul 2022.
Should you require further information please contact the branch. Please Note additional fees could be incurred for items such as Leasehold packs.

£230,000



check out more properties at allenandharris.co.uk



Property Ref:
STG110033 - 0002

1. MONEY LAUNDERING REGULATIONS Intending purchasers will be asked to produce identification documentation at a later stage and we would ask for your co-operation in order that there is no delay in agreeing the sale. 2. These particulars do not constitute part or all of an offer or contract. 3. The measurements indicated are supplied for guidance only and as such must be considered incorrect. Potential buyers are advised to recheck measurements before committing to any expense. 4. We have not tested any apparatus, equipment, fixtures or services and it is in the buyers interest to check the working condition of any appliances. 5. Where an EPC, or a Home Report (Scotland only) is held for this property, it is available for inspection at the branch by appointment. If you require a printed version of a Home Report, you will need to pay a reasonable production charge reflecting printing and other costs. 6. We are not able to offer an opinion either written or verbal on the content of these reports and this must be obtained from your legal representative. 7. Whilst we take care in preparing these reports, a buyer should ensure that his/her legal representative confirms as soon as possible all matters relating to title including the extent and boundaries of the property and other important matters before exchange of contracts.

Allen & Harris is a trading name of Sequence (UK) Limited which is registered in England and Wales under company number 4268443, Registered Office is Cumbria House, 16-20 Hockliffe Street, Leighton Buzzard, Bedfordshire, LU7 1GN. VAT Registration Number is 500 2481 05.



0117 979 8082



StokeGifford@allenandharris.co.uk



41 North Road, Stoke Gifford, BRISTOL, BS34 8PB



allenandharris.co.uk