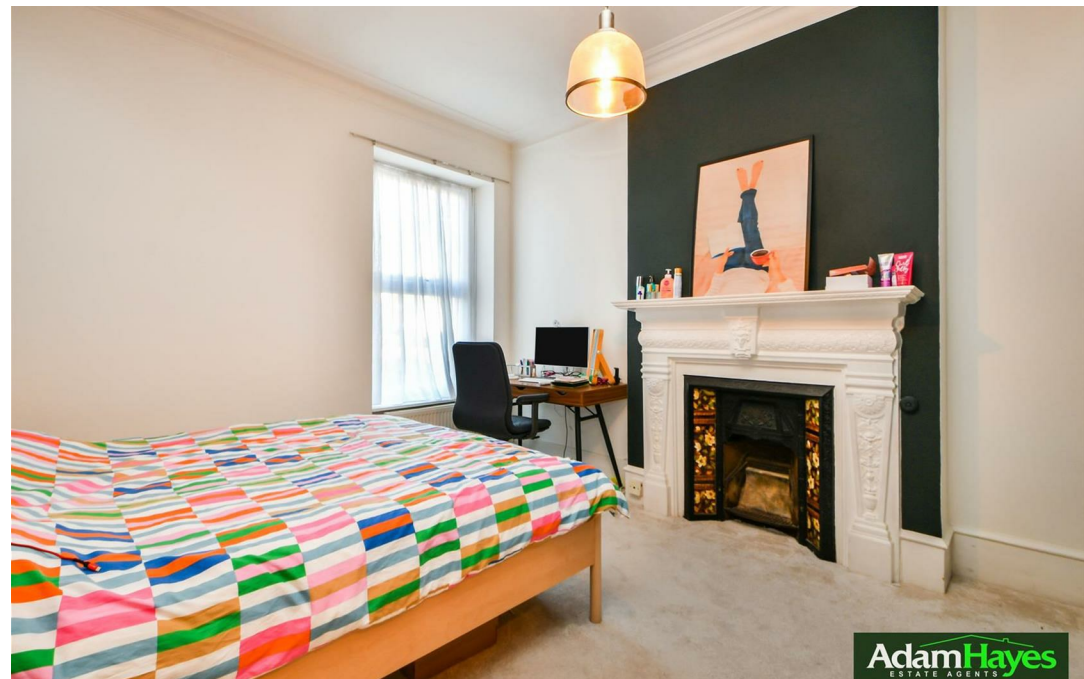




Nether Street, Finchley Central, N3

OIEO £585,000

 2 Bedrooms  1 Bathroom  1 Reception



Adam Hayes - Finchley Central Office - Sales 348 Regents Park Road, Finchley Central, London, N3 2LJ
Tel: 0208 189 6333 Email: info@adam-hayes.co.uk Web: www.adam-hayes.co.uk

Nether Street, Finchley Central, N3

OIEO £585,000

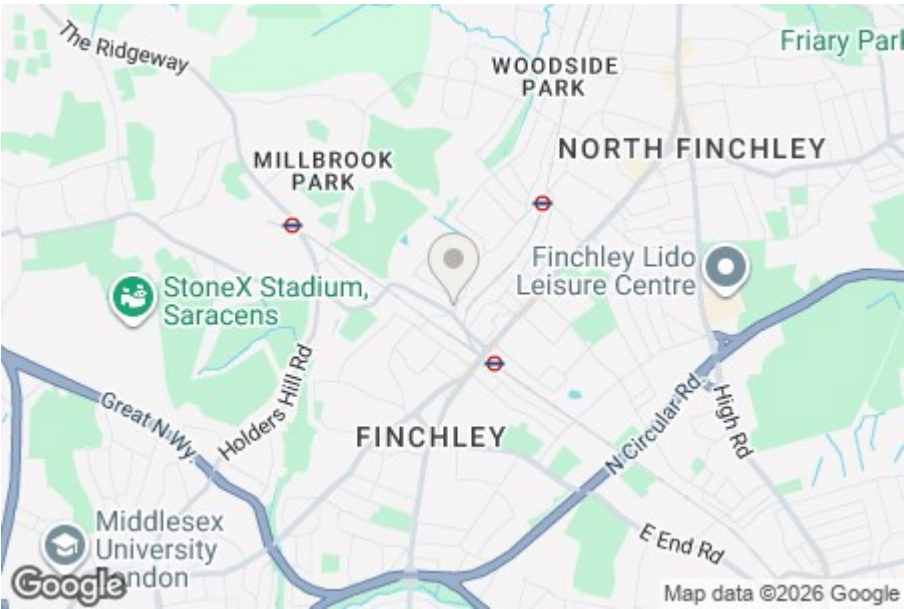
2 Bedrooms 1 Bathrooms 1 Receptions

Key Features

- Two Bedrooms
- Ground Floor
- Character Conversion
- Off Street Parking
- Close to Station
- Modern Kitchen

Other Information

Tenure: Share of Freehold
Length of Lease: 999 Years
Ground Rent: Nil
Service Charge: Nil
Council Tax Band: D



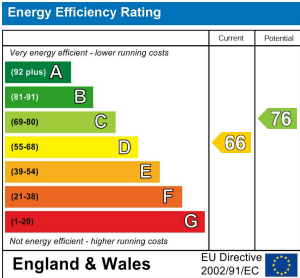
Nearest Stations

Finchley Central Station 0.3 miles
West Finchley Station 0.5 miles
Mill Hill East Station 0.7 miles

Property Description

Set back off Nether Street and within walking distance to both Finchley Central and West Finchley underground stations is this beautifully presented and spacious ground-floor conversion flat set within an attractive period-style property. Thoughtfully arranged, the property offers a bright and well-proportioned reception room, two generous double bedrooms, and a contemporary fitted kitchen/breakfast room ideal for casual dining. A well-appointed shower room completes the internal accommodation. To the rear, a private garden provides a tranquil outdoor retreat—perfect for entertaining, relaxing, or al-fresco dining throughout the warmer months. Further benefits include off-street parking and the significant advantage of being sold with a share of the freehold, ensuring long-term security and control for future owners.

Ideally suited for professionals, downsizers, or small families, this charming home is moments from local cafés, shops, and green spaces, while offering seamless connectivity into central London. To truly appreciate the size, condition, and enviable location of this exceptional property, an internal viewing is highly recommended through the vendor’s sole agents, Adam Hayes Estate Agents.



Adam Hayes - Finchley Central Office - Sales 348 Regents Park Road, Finchley Central, London, N3 2LJ

Tel: 0208 189 6333 Email: info@adam-hayes.co.uk Web: www.adam-hayes.co.uk



These particulars, whilst believed to be accurate, are set out as a general outline only for guidance and do not constitute any part of an offer or contract. Intending purchasers or prospective tenants should not rely on them as statements or representation of fact, but must satisfy themselves by inspection or otherwise as to their accuracy. We have not carried out a detailed survey, not tested the services, appliances and specific fittings. Room sizes should not be relied upon for carpets and furnishings. The measurements given are approximate. No person in this firm's employment has the authority to make or give any representation or warranty in respect of the property.