



Badgers Brook Rise, offers in excess of £390,000

- Sought after location within a short distance of Cowbridge town centre and local amenities
- Well presented throughout with shutter blinds, herringbone oak flooring, Recent exterior render clean and seal
- Living room with excellent storage and feature log burner
- Fantastic kitchen / dining room with



 4  2  2



About the property

This immaculate detached house is an ideal family home and is situated in a highly sought-after location, surrounded by local amenities and reputable schools.

The property boasts a well-proportioned layout over two levels and has been maintained to a high standard by the current owners including recently having had an exterior render clean and seal. As you enter the property, you are greeted by a spacious reception room, complete with a stunning fireplace. This room offers a perfect space for both relaxation and entertainment.

The kitchen is another highlight of this house. It has been designed with practicality and style in mind, offering plenty of storage and workspace. It is truly the heart of this home, perfect for family meals, and social gatherings.

The house consists of four generous bedrooms with an ensuite to the master bedroom, providing ample space for a growing family.



Accommodation

Entrance Hall

16' 3" x 3' 8" (4.95m x 1.12m)

The property welcomes you through a canopied entrance with a composite front door, opening into a spacious entrance hall. This area features a soft carpet underfoot and a pendant ceiling light above. A half-turn staircase rises to the first floor, with a useful under-stairs storage cupboard measuring 2'5" x 3'5", complete with a pendant light and herringbone oak flooring.

Ground Floor Wc

5' 3" x 3' 4" (1.60m x 1.02m)

Just off the entrance hall, the ground floor WC includes a ceramic tiled floor, a pedestal wash hand basin, and a low-level WC. A frosted window with an integrated shutter provides privacy and natural light.

Living Room

18' 1" x 10' 10" (5.51m x 3.30m)

A welcoming space with oal herringbone flooring and two pendant ceiling lights. A large window to the front aspect allows natural light to flood the room, creating a bright and airy atmosphere. Fitted

with excellent storage space to one wall with shelving and cupboards, log burner.

Kitchen/Breakfast/Dining Room

18' 9" x 15' 9" (5.71m x 4.80m)

This open-plan kitchen, breakfast, and dining area is laid with a ceramic tiled floor and illuminated by multiple pendant ceiling lights. The modern fitted wall and base units are topped with composite worktops, and the 1½ stainless steel sink with a drainer is conveniently positioned. A marble-topped kitchen island can either be removed or remain at the property, alongside integrated appliances including a Zanussi oven, gas hob, matching extractor, dishwasher, and Bosch washing machine. The 'Ideal' Combi boiler is neatly enclosed within a wall-mounted unit, while additional storage is available in a cupboard. French doors open out to the rear garden, seamlessly blending indoor and outdoor living.

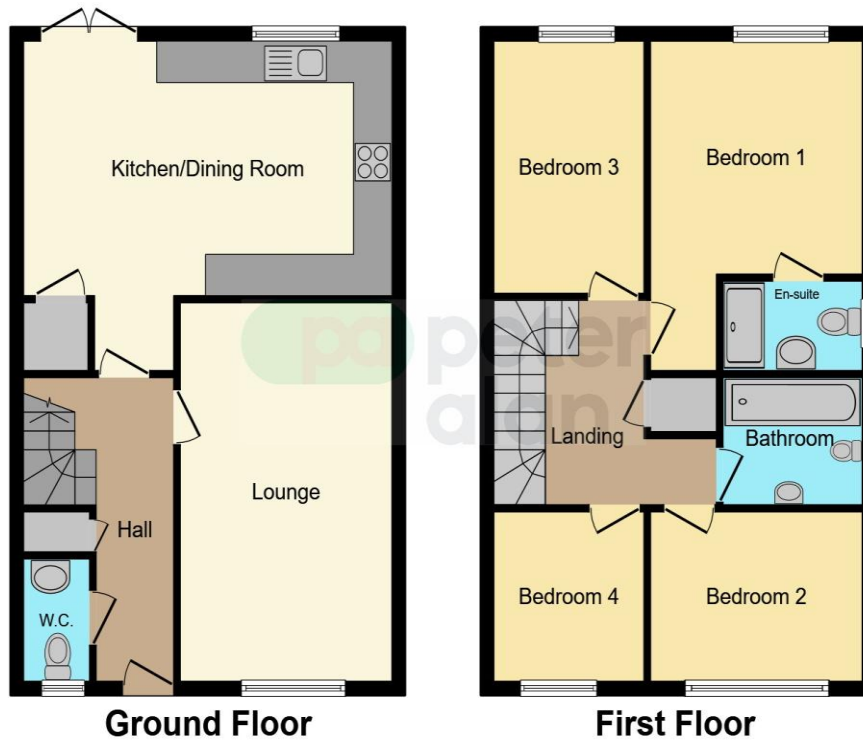
First Floor Landing

The first-floor landing is carpeted and lit by a pendant ceiling light. An airing cupboard houses the pressurised tank and cylinder, and an attic hatch with a pull-down ladder provides easy access to the boarded loft space.

01446 772857

enquiries@pablack.co.uk

Floorplan



This floor plan is for illustrative purposes only. It is not drawn to scale. Any measurements, floor areas (including any total floor area), openings and orientation are approximate. No details are guaranteed, they cannot be relied upon for any purpose and they do not form part of any agreement. No liability is taken for any error, omission or misstatement. A party must rely upon its own inspection(s). Powered by www.focalagent.com

Important Information

Note while we endeavour to make our sales details accurate and reliable, if there is any point which is of particular interest to you, please contact the office and we will be pleased to confirm the position for you. We have not personally tested any apparatus, equipment, fixtures, fittings or services and cannot verify they are in working order or fit for their purposes. Nothing in these particulars is intended to indicate that carpets or curtains, furnishings or fittings, electrical goods (whether wired or not). Gas fires or light fittings or any other fixtures not expressly included form part of the property offered for sale. This computer generated Floorplan, if applicable, is intended as a general guide to the layout and design of the property. It is not to scale and should not be relied upon for dimensions. Tenure: We cannot confirm the tenure of the property as we have not had access to the legal documents. The buyer is advised to obtain verification from their solicitor or surveyor.

Peter Alan Limited is registered in England and Wales under company number 2073153, Registered Office is Cumbria House, 16-20 Hockliffe Street, Leighton Buzzard, Bedfordshire, LU7 1GN. VAT Registration Number is 500 2481 05. For activities relating to regulated mortgages and non-investment insurance contracts, Peter Alan Limited is an appointed representative of Connells Limited which is authorised and regulated by the Financial Conduct Authority. Connells Limited's Financial Services Register number is 302221. Most buy-to-let

pa peter
alan