



Obelisk Rise

Kingsthorpe, Northampton

oriordanbond
SALES & LETTINGS



Obelisk Rise

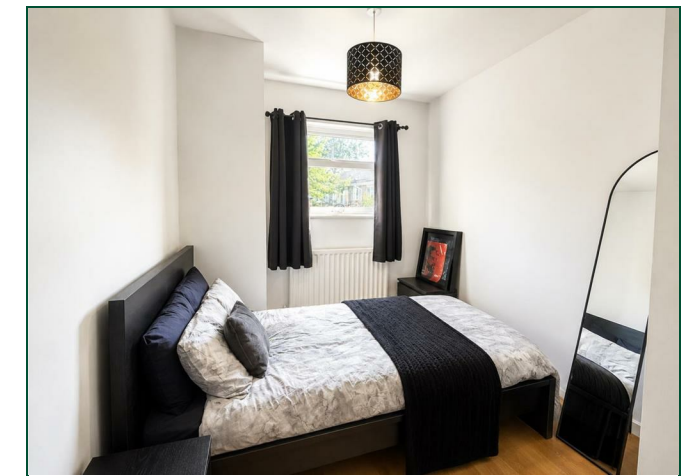
Kingsthorpe
NN2 8QU

Price
£265,000

Located in the sought after Obelisk Rise area within Kingsthorpe is this extended three bedroom end terraced family home. The property is within walking distance to local schools, amenities and playing fields.

Accommodation comprises entrance hall, sitting room, kitchen and extended dining area that leads out to the garden. To the first floor are three bedrooms and a family bathroom. Outside is a low maintenance front garden and an enclosed private rear garden with paved patio and remainder laid to lawn. Further benefits include gas radiator heating, uPVC double glazing and a garage in a nearby block. (B/856/S)

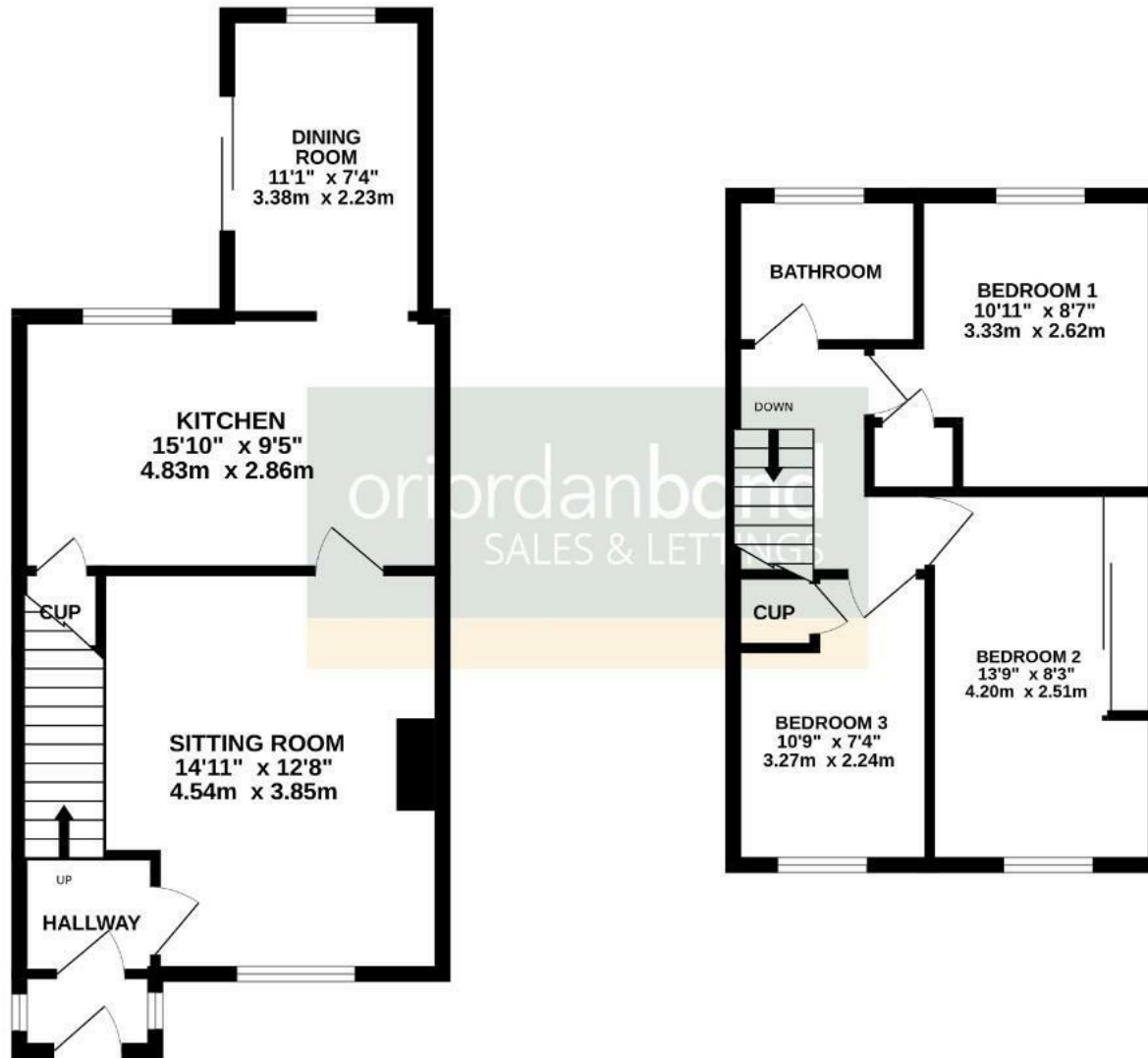
- Extended three bedroom end terraced home
- Two reception rooms
- Gas radiator heating
- uPVC double glazed
- Enclosed private rear garden
- Garage in nearby block





GROUND FLOOR

1ST FLOOR



TOTAL FLOOR AREA : 856 sq.ft. (79.5 sq.m.) approx.

Whilst every attempt has been made to ensure the accuracy of the floorplan contained here, measurements of doors, windows, rooms and any other items are approximate and no responsibility is taken for any error, omission or mis-statement. This plan is for illustrative purposes only and should be used as such by any prospective purchaser. The services, systems and appliances shown have not been tested and no guarantee as to their operability or efficiency can be given. Made with Metropix ©2026



Additional information

- Council Tax Band: B
- Energy Efficiency Rating:

Viewing

Viewing strictly by appointment – details below

Disclaimer

O’Riordan Bond Estate Agents Limited has not tested apparatus, equipment, fittings or services and so cannot verify they are in working order. The buyer is advised to obtain verification from their solicitor or surveyor.

O’Riordan Bond Kingsthorpe Sales

01604 722007

kingsthorpe@oriordanbond.co.uk

