

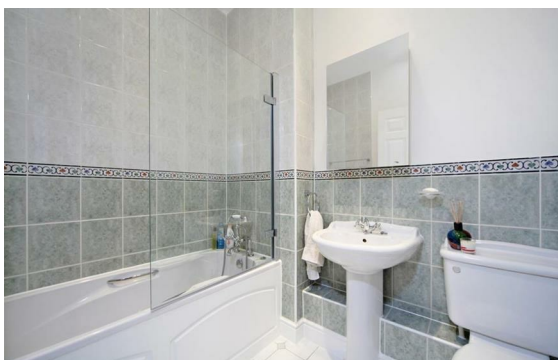
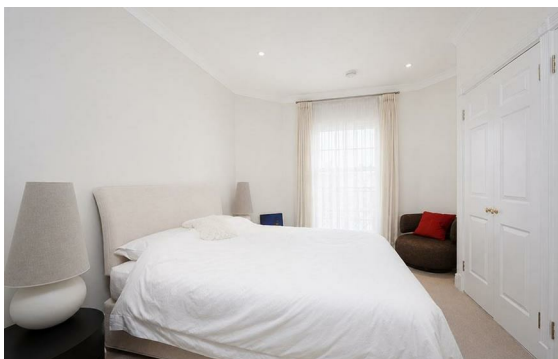


Marylebone Road, Marylebone, London, NW1

Rent £1,115 PCM

3 Bed | 2 Bath | 1 Reception

Please call us on 020 7724 2233 or email us info@newingtonstates.com to book a viewing.



A well-presented three-bedroom apartment offering bright and practical living space in a sought-after central London location. The property features a spacious reception room with a bay window, a separate modern kitchen, and three bedrooms, including two doubles and a third single bedroom ideal as a study or nursery. The principal bedroom benefits from an en-suite bathroom, complemented by a separate family bathroom.

Residents benefit from lift access and 24-hour porter service. Ideally located close to Baker Street Station, Marylebone High Street, and Regent's Park.

EPC Rating: D

Energy Efficiency Rating: D

Agents Note: Whilst every care has been taken to prepare these particulars, they are for guidance purposes only. All measurements are approximate and are for general guidance purposes only and whilst every care has been taken to ensure their accuracy, they should not be relied upon and potential buyers/tenants are advised to recheck the measurements.

NEWINGTON
— ESTATES —

60 Upper Montagu Street

London

W1H 1SN

020 7724 2233

info@newingtonstates.com

<http://www.newingtonstates.com>