



Branford Road, Norwich, NR3

A Spacious First Floor One Bedroom Apartment!

GUIDE PRICE £175,000 LEASEHOLD 988 Years Remaining



BRITISH
PROPERTY
AWARDS

2025



GOLD WINNER

ESTATE AGENT
IN NORWICH
(NR10-16)

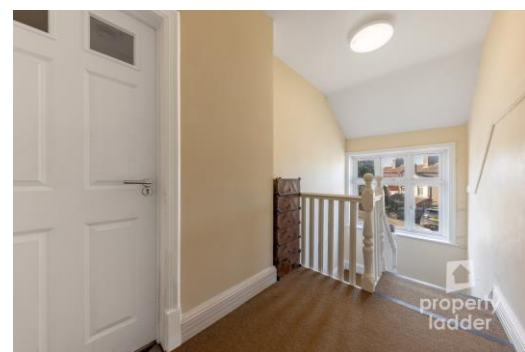
HISTORIC CHARACTER WITH MODERN NR3 SOUL!

Situated in the heart of NR3, just a short stroll from the independent shops, cafés and pubs, and within walking distance of Norwich City centre, this impressive first floor apartment forms part of a charming former converted public house!

The apartment is accessed via a private ground floor entrance shared with only one other flat. Inside, large windows bathe the space in natural light, complementing the remaining feature fireplaces that add warmth and charm throughout. The accommodation comprises a welcoming hallway with a useful storage cupboard, a generous double bedroom with feature fireplace, and a well appointed four piece bathroom complete with a separate shower unit. To the rear, a spacious living room with a further feature fireplace flows seamlessly into the kitchen/diner, which benefits from built in appliances including an integrated oven and hob.



“ large windows bathe the space in natural light ”



Overview

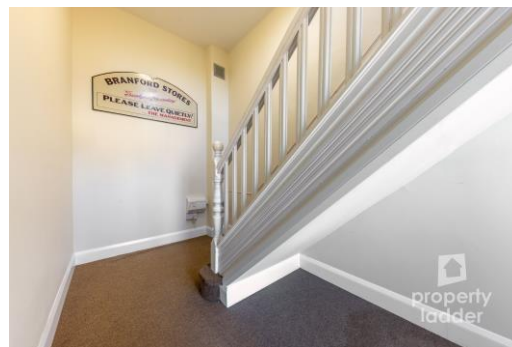
- Four Piece Bathroom Suite With Separate Shower
- Kitchen/Diner With Integrated Oven & Hob
- Walking Distance To Norwich City Centre & Amenities
- Impressive Remaining Lease Length Of 988 Years
- Large Windows & Original Feature Fireplaces
- Former Converted Public House
- Gas Combi Boiler & Double Glazing
- Communal Gardens & Bike Sheds





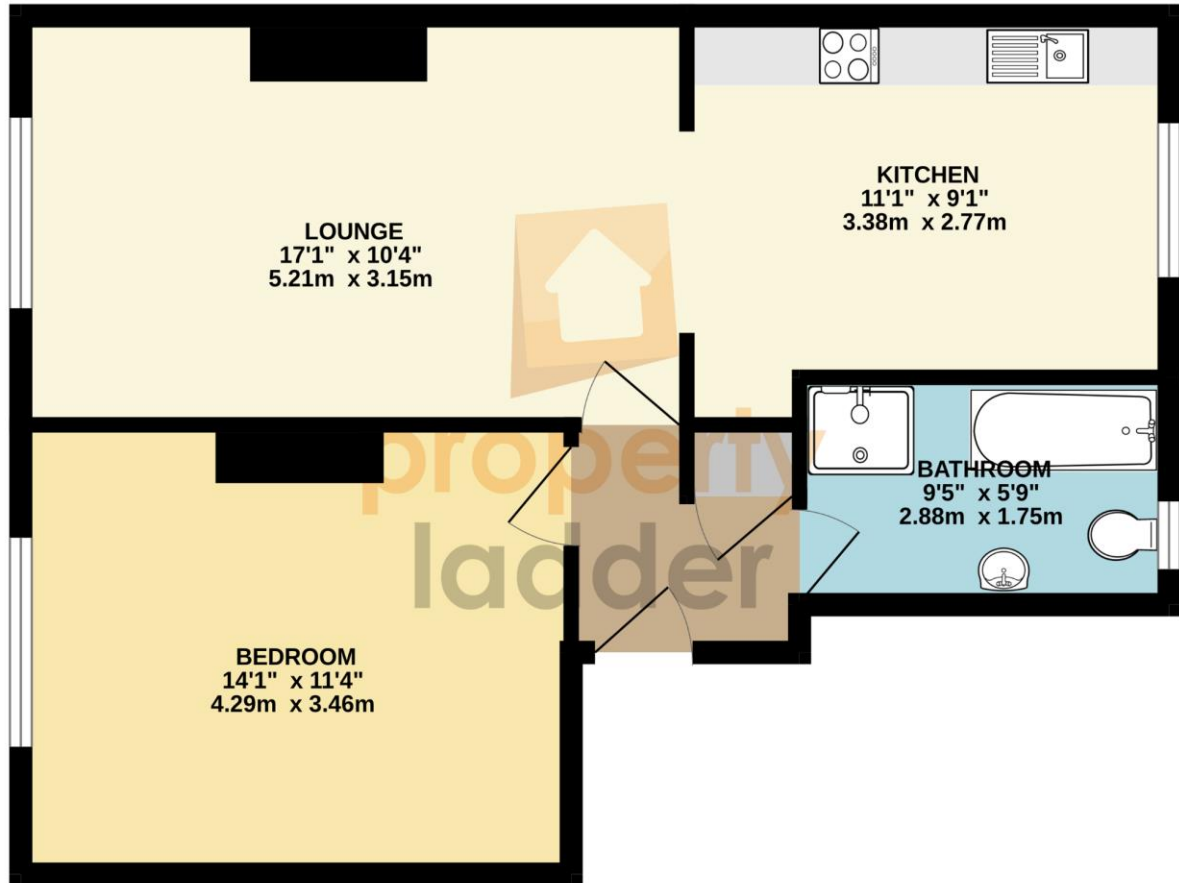
Location

Branford Road in NR3, Norwich is a well-positioned residential street within walking distance to Norwich City centre & easy reach of a wide range of local amenities. Just minutes away you'll find popular cafés and bakeries perfect for morning coffee, a selection of pubs and bars for relaxed evenings out, and a variety of independent shops, convenience stores, and takeaways for everyday essentials. Supermarkets, pharmacies, and other services are also close by, with regular bus links providing quick access in and out of Norwich. The area is well served by nearby green spaces, including Mousehold Heath, offering open trails, woodland walks, and recreational areas, as well as smaller local parks perfect for leisure and exercise.



Outside

Communal gardens, bike sheds, an impressive remaining lease and reasonable leasehold charges, making this a superb opportunity in a prime North City location!



FULL EPC AVAILABLE UPON REQUEST

Score	Energy rating	Current	Potential
92+	A		
81-91	B		
69-80	C	77 c	77 c
55-68	D		
39-54	E		
21-38	F		
1-20	G		

Selling your home?

If you are considering selling your home, please contact us for your no obligation free market appraisal.

COUNCIL TAX BAND: A

LOCAL AUTHORITY: NORWICH CITY COUNCIL

SERVICES CONNECTED: MAINS WATER, MAIN DRAINS, MAINS ELECTRICITY, GAS CENTRAL HEATING

BRITISH PROPERTY AWARDS 2025

GOLD WINNER

ESTATE AGENT IN NORWICH (NR10-16)

98 Crostwick Lane, Spixworth, NR10 3NQ
T 01603 898100
 propertyladderonline.com

IMPORTANT NOTICE: Property Ladder, their clients and any joint agents give notice that: 1. They are not authorised to make or give any representations or warranties in relation to the property either here or elsewhere, either on their own behalf or on behalf of their client or otherwise. They assume no responsibility for any statement that may be made in these particulars. These particulars do not form part of any offer or contract and must not be relied upon as statements or representations of fact. 2. Any areas, measurements or distances are approximate. The text, photographs and plans are for guidance only and are not necessarily comprehensive. It should not be assumed that the property has all necessary planning, building regulation or other consents and Property Ladder have not tested any services, equipment or facilities. Purchasers must satisfy themselves by inspection or otherwise.