



HEARTWOOD
HOMES

Lattimore Road, St. Albans, AL1 3XW

£500,000

🛏️ 2 🚿 1 🚗 2



Life here is all about ease and enjoying what St Albans does best. Step out your front door and within moments you can be at the station for a smooth commute, picking up a morning coffee, or wandering into the city centre to meet friends for dinner. Weekends might start with a stroll to the local deli, followed by a relaxed afternoon in your own garden.

This charming chain free Victorian cottage blends character with a layout that really works for modern living. Set over three floors, it offers a natural flow of space, whether you are hosting friends or enjoying a quieter evening in.

The living and dining room is warm and inviting, with a feature fireplace that makes it an easy place to settle into at the end of the day. Downstairs, the kitchen diner is a sociable space, ideal for cooking, chatting and spending time together. It is a room that naturally becomes the heart of the home.

Upstairs, both bedrooms are comfortable doubles. The main bedroom feels particularly light with its dual windows, while the second bedroom offers a calm and peaceful spot overlooking the garden. The bathroom sits conveniently off the landing.

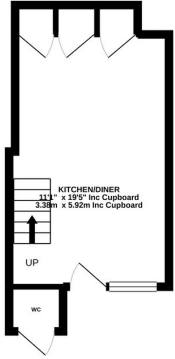
Outside, the south east facing garden is a real extension of the living space. There is room for outdoor dining, space to relax on the lawn and the perfect setting for summer evenings with friends and family.

Having your own private parking space in such a central location is a genuine bonus, making day to day life that bit simpler.

A home that offers character, comfort and a lifestyle that makes the most of everything St Albans has to offer.



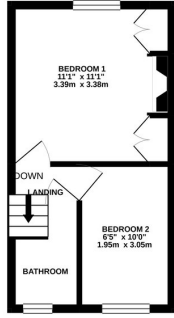
LOWER GROUND FLOOR
239 sq ft. (22.3 sq m) approx.



GROUND FLOOR
233 sq ft. (21.8 sq m) approx.



1ST FLOOR
230 sq ft. (21.5 sq m) approx.



TOTAL FLOOR AREA - 682 sq ft. (63.3 sq m) approx.

Whilst every attempt has been made to ensure the accuracy of the floorplan contained here, measurements of doors, windows, rooms and any other items are approximate and no responsibility is taken for any error, omission or misstatement. This plan is for illustrative purposes only and should be used as such by any prospective purchaser. The services, systems and appliances shown have not been tested and no guarantee as to their quantity or efficiency can be given.
Made with Metreapp (2020)

- Victorian cottage in a prime central St Albans conservation area
- Just a short walk to the mainline station and city centre amenities
- Spacious living and dining room with a feature fireplace
- Two well-proportioned double bedrooms arranged over the upper floors
- South east facing garden with space for dining and relaxing
- Chain free, making for a smoother and quicker move
- Private parking space to the front, a rare benefit for this location
- Bright and sociable kitchen space on the lower ground floor
- Light and airy main bedroom with dual front-facing windows
- EPC Grade D

