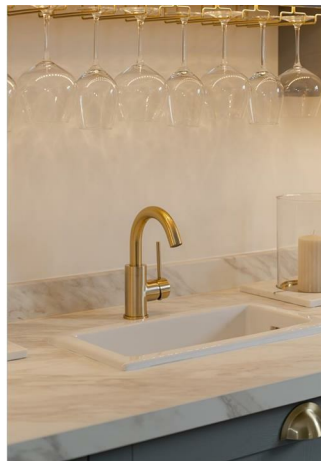




# Woodside Road, Dorking

£775,000





“

I love this home for its beautifully renovated style, combining stylish modern comforts with cosy character, all perfectly set within a peaceful and picturesque village setting that feels both welcoming and relaxing.

”



Set on the charming Woodside Road in Beare Green, this exquisite detached house has been meticulously refurbished and extended to create a remarkable family residence. Spanning an impressive 2,243 square feet, the property features four generously sized bedrooms and two modern bathrooms, making it an ideal choice for contemporary family living.

As you step inside, you are welcomed by a charming entrance hall that leads to a stunning open-plan family room and dining area, complete with a feature log burner that adds warmth and character. This space is designed for both relaxation and entertaining, enhanced by a sleek bar area that sets the perfect scene for social gatherings.

The principal bedroom suite is conveniently located on the ground floor, offering an en suite bathroom for added privacy. The kitchen is a true highlight of the home, showcasing a beautiful central island and high-end appliances that will delight any culinary enthusiast. Adjacent to the kitchen, a superb utility room provides practical access to the rear garden.

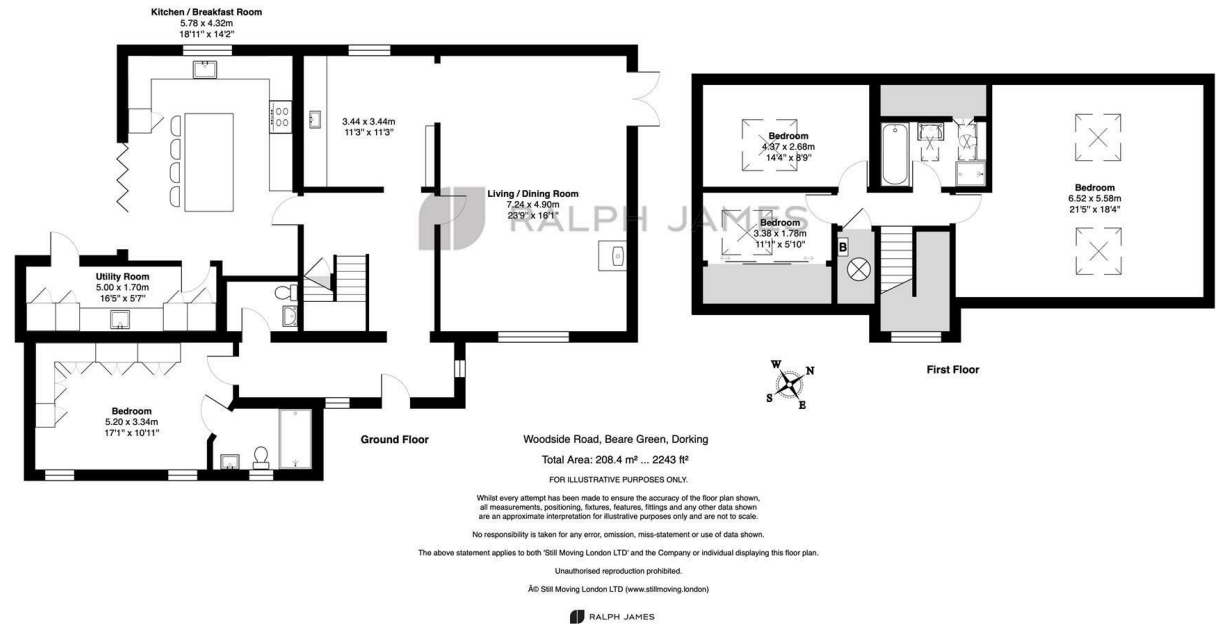
Ascending to the first floor, you will discover three additional spacious double bedrooms, all served by a beautifully appointed family bathroom, ensuring ample accommodation for family members or guests.

Outside, the property boasts an extensive shingle driveway, providing ample parking for multiple vehicles. The wraparound garden is a tranquil retreat, offering excellent privacy with a large Indian sandstone terrace, perfect for entertaining, alongside a lush lawn, mature trees, and thoughtfully planted borders.

With its prime location, this home is conveniently situated near Holmwood train station, local amenities, and the stunning surrounding countryside. This property is a must-see for families seeking a stylish and spacious home in a highly desirable area.

# Need to know

- Four spacious bedrooms
- Fully renovated throughout
- Large L-shaped living room/ dining room
- Ample driveway parking
- Wraparound private garden
- Detached
- Near Holmwood train station
- Utility room
- Feature log burner in family room



---

## Interested?

dorking@ralphjames.co.uk  
01306 284555

#

ralphjames.co.uk