



32 Craigroyston Place

Muirhouse, Edinburgh, EH4 4DJ



VMH ESTATE AGENTS



Lovely mid-terraced villa with driveway & private rear garden

- Sitting room
- Kitchen/dining room
- 2 double bedrooms
- Bathroom
- Bright & well proportioned
- Popular residential area
- Lovely position overlooking the park
- Private rear garden
- Driveway
- Gas central heating & double glazing



Offers Over:

£180,000



Further information can be found in the home report.

About the Property

32 Craicroyston Place is a lovely mid-terraced villa located in Muirhouse.

The property occupies a peaceful position in a cul-de-sac overlooking Muirhouse Park.

Internally, the property offers bright and well proportioned accommodation over two levels.

The property also benefits from a driveway to the front and an enclosed, private rear garden.

Extras

To include all carpets, floor coverings, curtains, curtain poles & blinds in addition to the white goods within the kitchen - oven, hob, cooker hood, fridge/freezer and washing machine.





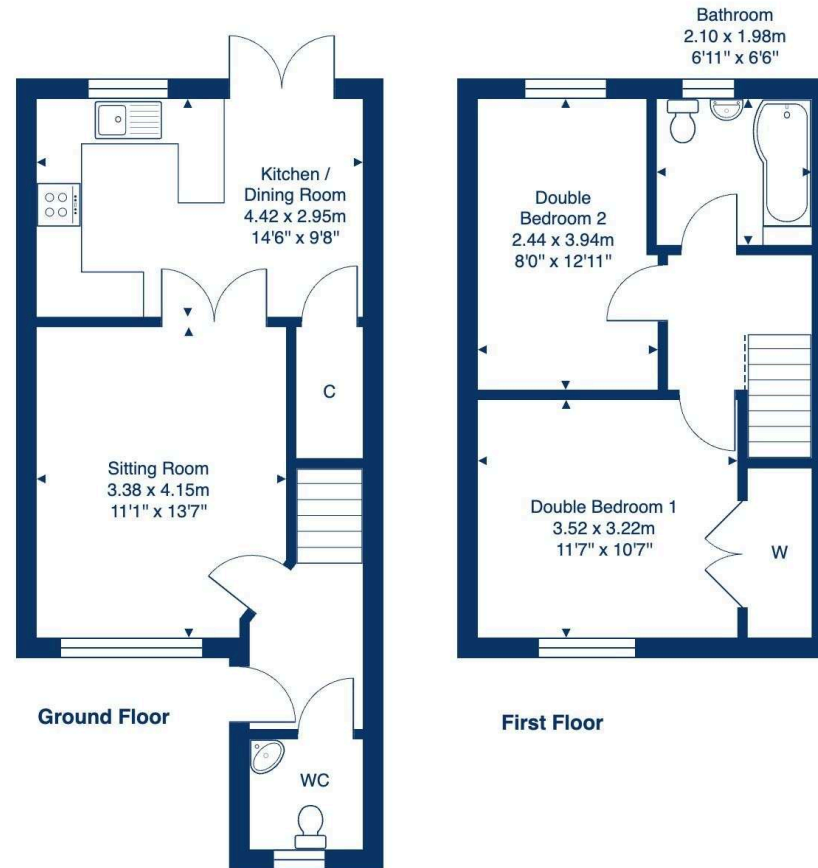
📍 Location

Muirhouse, situated to the north of the city borders Granton, Pilton and Davidson's Mains. The area is undergoing significant urban regeneration, including the creation of a new commercial centre and community hub in Muirhouse, and a 300-berth marina at Granton as part of a multi-million-pound waterfront development. Local residents can walk, jog or cycle along the scenic Silverknowes Esplanade towards Cramond Beach to the west, stopping at various waterfront bars and beach cafes to take in the view, or take a relaxed stroll eastwards to Newhaven, which has retained all the charm of a quaint fishing village. Golf enthusiasts are spoiled for choice with Silverknowes Golf Course right on their doorstep, and Bruntsfield Links Golfing Society and Royal Burgess Golf Club both nearby. The area is served by excellent amenities in neighbouring Davidson's Mains, as well as extensive retail facilities at Craighleith Retail Park. Muirhouse enjoys swift access to the M8/ M9 motorway networks and the Forth Bridges, and also benefits from fantastic public bus routes and cycle paths for swift, sustainable travel across the city and beyond.



Floor Plan

32 Craigroyston Place, Edinburgh, EH4 4DJ



Total Area: 69.7 m² ... 750 ft²

All measurements are approximate and for display purposes only.



VMH ESTATE AGENTS



VMH SOLICITORS

More is our middle name.

Registered Office: 8 Sibbald Walk, Edinburgh, EH8 8FT

 **0131 622 2626**

 **property@vmh.co.uk**

 **vmh.co.uk**

 **DX: 552210, Edinburgh 68**

The dimensions provided are for illustration purposes only; detailed measurements should be taken personally. No documentation will be exhibited in respect of the compliance or otherwise of replacement windows. Although every attempt has been taken to ensure accuracy, the details within the brochure are not guaranteed or warranted and will not form part of any future contract to buy.